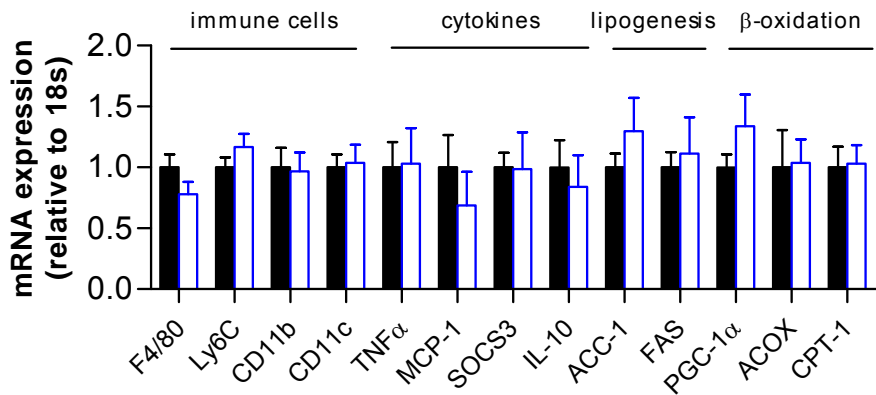
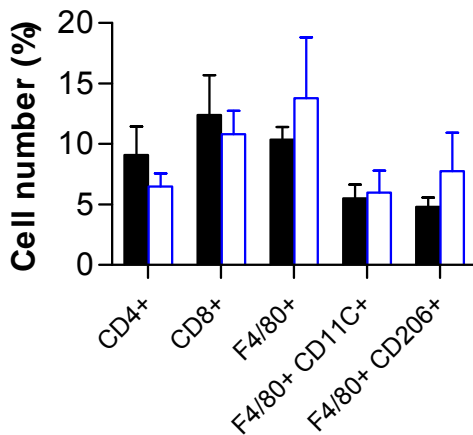


# Supplemental Figure 13

## A



## B



### mRNA expression and flow cytometric analysis of skeletal muscle from Fas<sup>F/F</sup> and Fas<sup>Δmye</sup> mice

(A) mRNA expression of respective genes in skeletal muscle of HFD-fed Fas<sup>F/F</sup> (black bars) and Fas<sup>Δmye</sup> (blue bars) mice. n=6-10. (B) Flow cytometric analysis of skeletal muscle cells of Fas<sup>F/F</sup> (black bars) and Fas<sup>Δmye</sup> (blue bars) mice. Cells were stained with respective antibodies and fluorescence was measured. n=5. All error bars represent SEM.