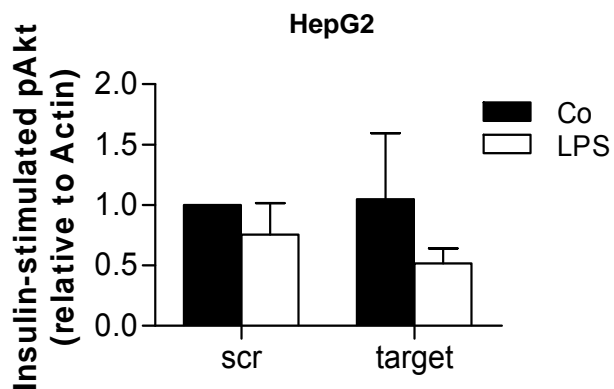


## Supplemental Figure 18



### **No effect of Fas down-regulation in RAW cells on conditioned medium-induced insulin resistance in HepG2 cells**

HepG2 cells were incubated overnight with conditioned media and then stimulated with 100 nM insulin for 10 min. Phosphorylation of Akt on Thr308 was detected by Western blot technique. n=3. Error bars represent SEM.