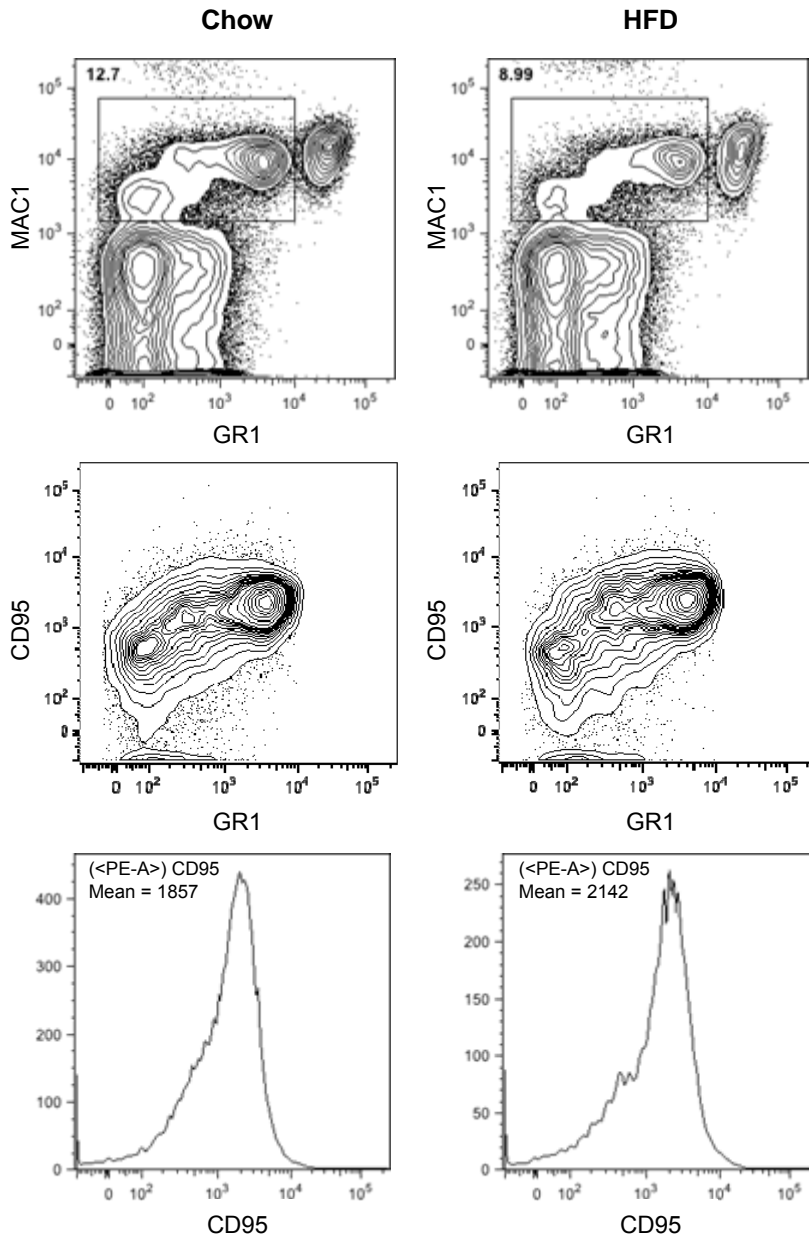


Supplemental Figure 4



Flow cytometric analysis in chow- and HFD-fed C57BL6/J mice

Flow cytometric analysis of peripheral blood leukocytes of chow- and HFD-fed mice. Monocytes (GR1^{low/im} MAC1⁺) were stained with respective antibodies and contour plots were gated on live cells. Inset is the percentage of cells within the GR1^{low/im} Mac1⁺ gate.