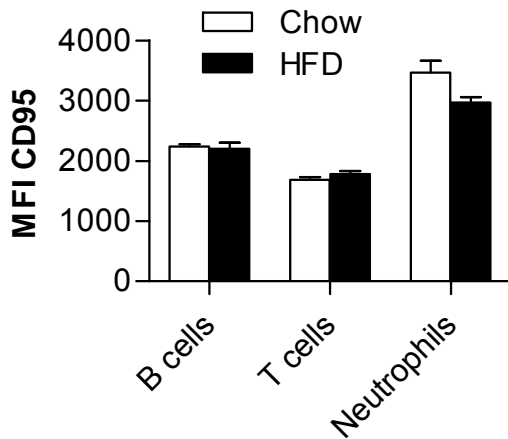


Supplemental Figure 5



Flow cytometric analysis of peripheral blood leukocytes of chow- and HFD-fed mice. B-cell (B220+), T-cell (CD3e+) and neutrophils (GR1hi MAC1+) were stained with respective antibodies. Bar graphs show mean fluorescence intensity (MFI) of Fas (CD95) of live cells. n=6-8. Error bars represent SEM.