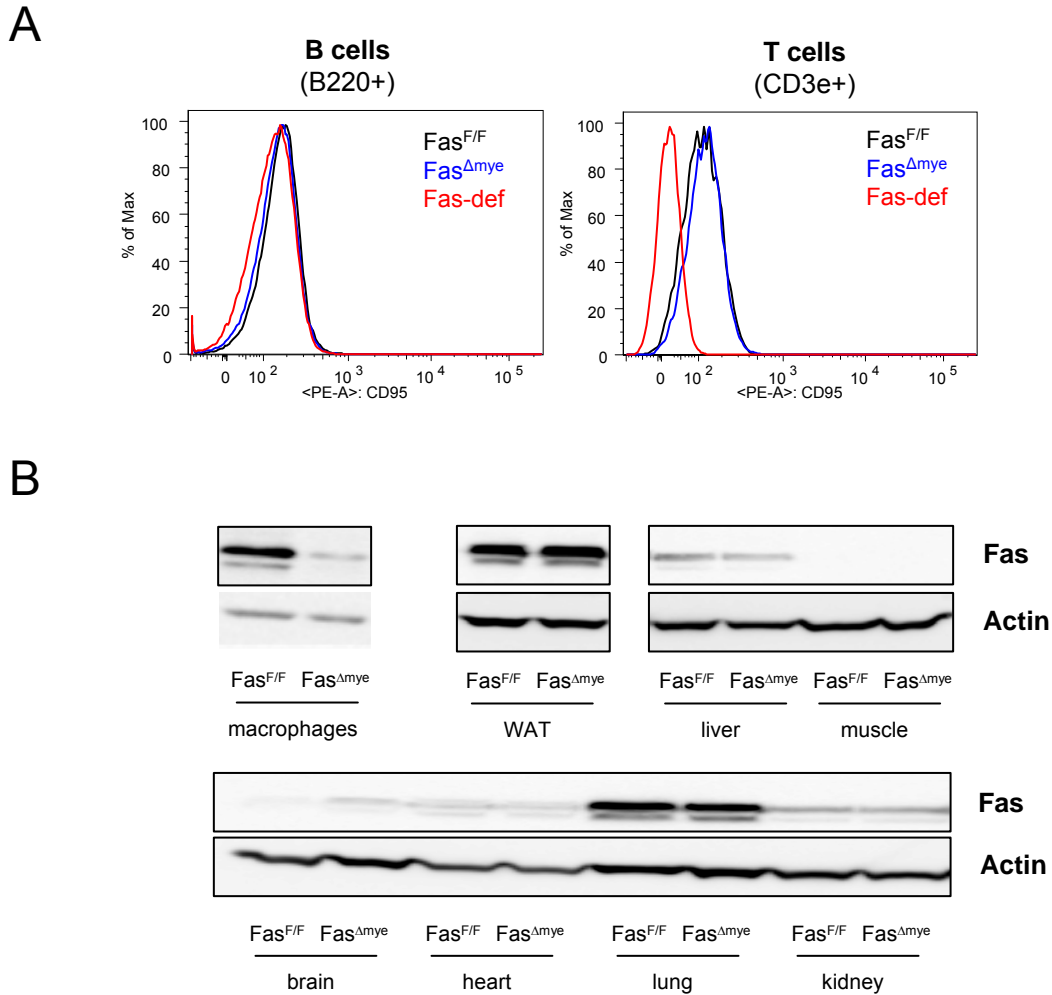


Supplemental Figure 6



Fas expression in Fas^{F/F} and Fas^{Δmye} mice

(A) Flow cytometric analysis of peripheral blood leukocytes of Fas-deficient, Fas^{F/F} and Fas^{Δmye} mice. Cells were stained with respective antibodies and Fas fluorescence was measured. (B) Western blot analysis of Fas protein levels in respective tissues of Fas^{F/F} and Fas^{Δmye} mice.