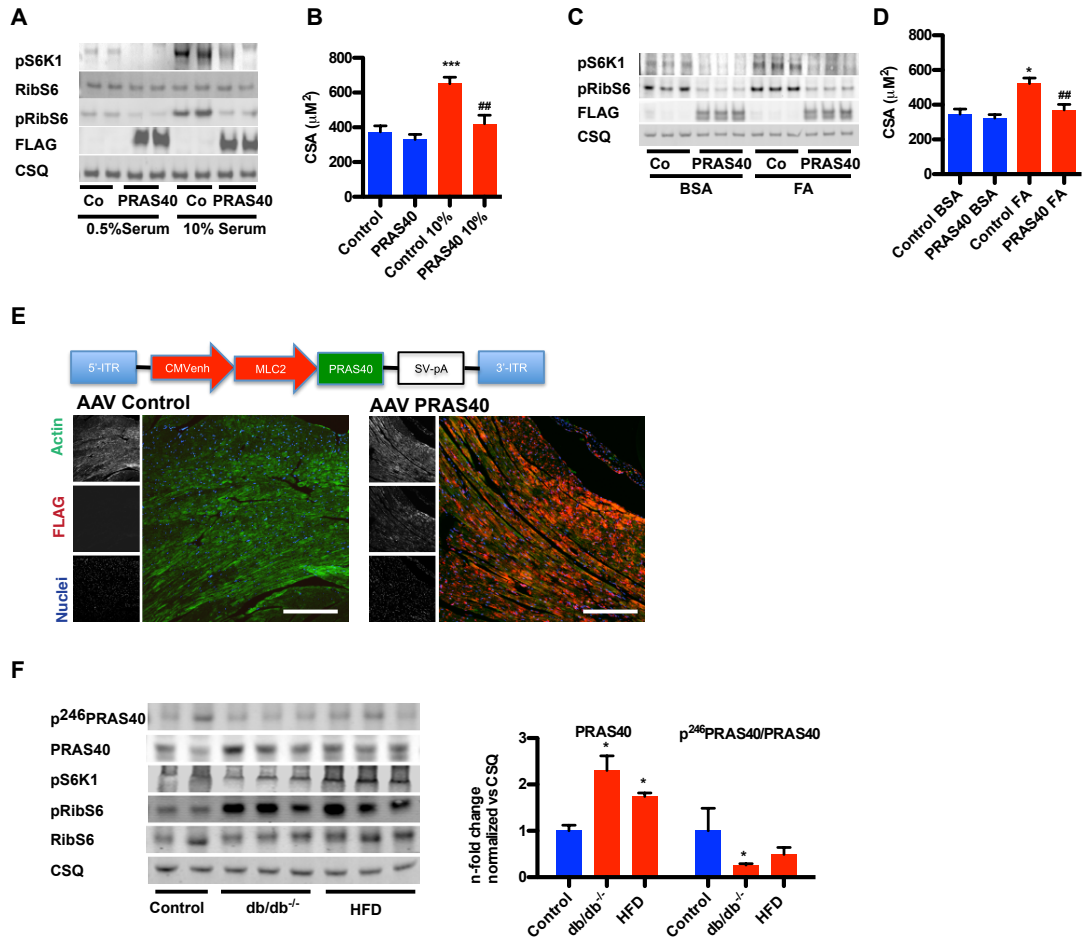


Supporting Figure 1



Supporting Figure 1. (A) mTORC1 activity is blocked by PRAS40 in response to high serum (B) Individual cell surface area (CSA) measurements from control or PRAS40 infected NRCMs and treated with 10%Serum (24h) (n=4 independent experiments, ***p<0.001 vs Control, ##p<0.01 vs Control 10%). (C) mTORC1 activity is blocked by PRAS40 in response to high Fatty acid concentrations (0.5ml/l) (D) Individual cell surface area (CSA) measurements from control or PRAS40 infected NRCMs and treated with Fatty Acids (24h) (n=3 independent experiments, *p<0.05 vs Control, ##p<0.01 vs Control FA). (E) Scheme of the AAV9PRAS40 under MLC2 promoter to overexpress PRAS40 in myocytes. Confocal microscopy of paraffin-embedded from PRAS40 mouse hearts stained for FLAG-tag (red), Actin (green) and nuclei (blue), scale bar 150μm. (F) Immunoblots showing mTORC1 and PRAS40 signaling in db/db and HFD mice. Barplots depicting quantitation of PRAS40 expression and p246/PRAS40 ratio . *p<0.05 versus control.