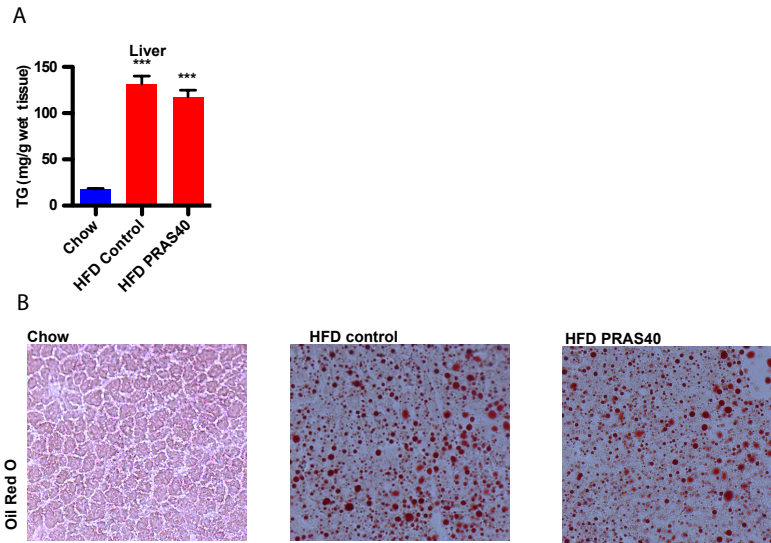


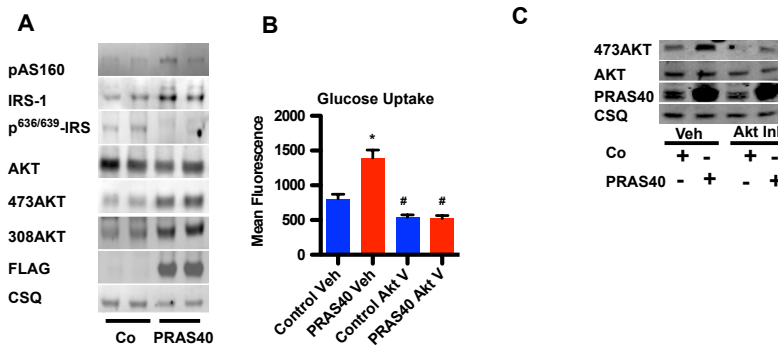
control *db/db*). CSA in control and PRAS40 mice (***p*<0.01 versus control het; ##*p*<0.01 versus control *db/db*). (C) *Nppa* and *Nppb* levels (***p*<0.01 versus control het; ##*p*<0.01 versus control *db/db*). (D) Immunoblots of whole heart lysates. Barplots depicting quantitation of Akt phosphorylation. **p*<0.05 versus control. (E) Body weight and glucose levels in the indicated groups ****p*<0.01 vs hets. (F) Mason-Trichrome staining of liver sections in the indicated groups. Scale bar 150μm (G) Blood insulin levels in the indicated groups. ****p*<0.01 vs controls. n=5 in each group.

Supporting Figure 4



Supporting Figure 4. (A) TG content in the liver ****p*<0.01 versus control chow. (B) Lipid accumulation evidenced by Oil Red O staining. Scale bar 150μm.

Supporting Figure 5



Supporting Figure 5. (A) IRS-1 degradation is prevented and Akt phosphorylation is