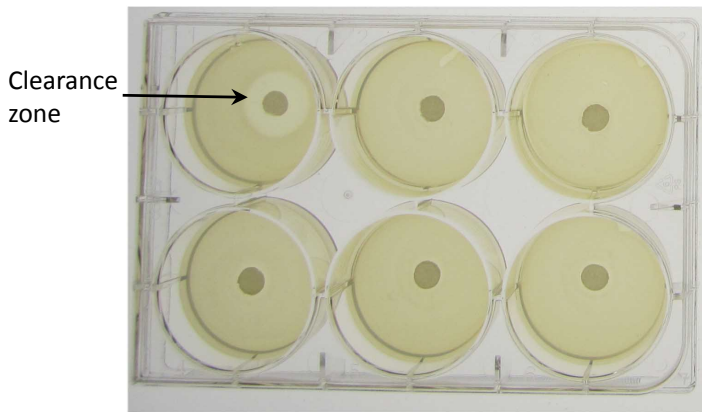
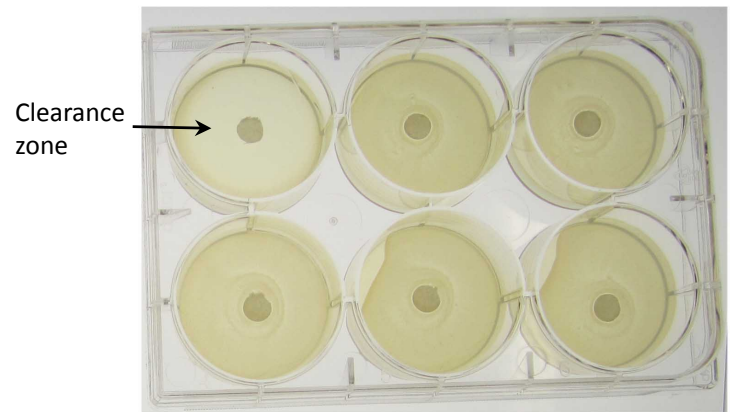


A

Ampicillin (10µg)	sA2MG (1µg)	sA2MG (100ng)
sA2MG (10ng)	sA2MG (1ng)	Vehicle

**B**

Ampicillin (10µg)	sA2MG (1µg)	sA2MG (100ng)
sA2MG (10ng)	sA2MG (1ng)	Vehicle



Supporting Information Figure 3. A2MG does not display direct antibacterial actions. 10 µg of ampicillin (as a positive control), sA2MG (1ng-1µg) or vehicle were each placed on LB agar plates containing **(A)** *E. coli* (1.7×10^7 CFU) or **(B)** *S. aureus* (1.7×10^7 CFU). The zone of clearance was assessed after overnight incubation at 37°C. Photographs represent n=3.