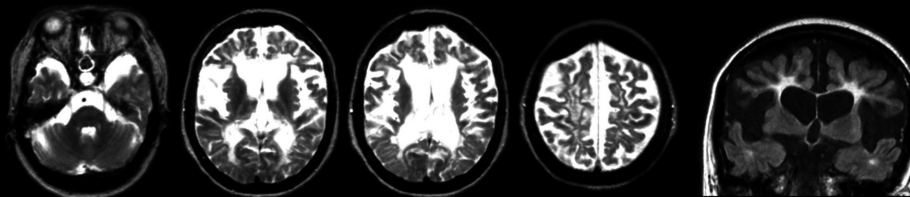
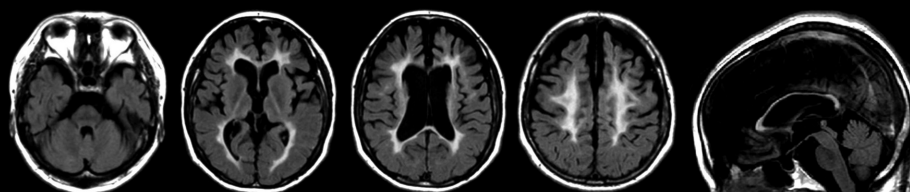


## Supplementary Fig.3 Konno *et al.*

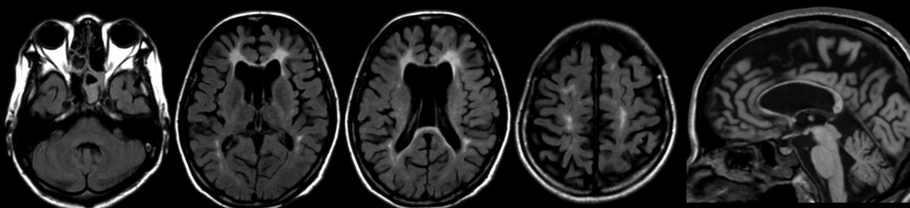
Patient I, 52 years  
(p.S688EfsX13)  
11 years after onset



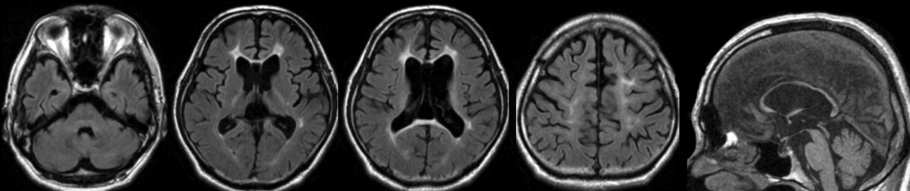
Patient II, 42 years  
(p.G765D)  
5 years after onset



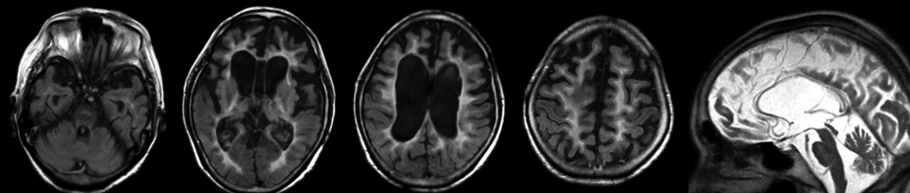
Patient III, 39 years  
(p.A781E)  
3 years after onset



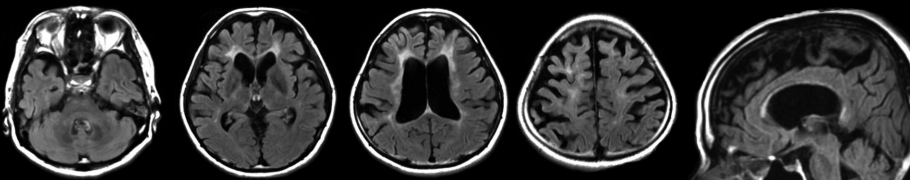
Patient IV, 41 years  
(p.I794T)  
1 years after onset



Patient V, 64 years  
(p.I794T)  
9 years after onset



Patient VI, 46 years  
(p.P824S)  
1 years after onset



### Figure e-3. Brain MRI findings in HDLS patients

T2-weighted or FLAIR images at initial MRI of patients with HDLS. Lesions with various degrees of hyperintensity in the white matter were observed in all the patients. Involvement of the corpus callosum shown as increased signal intensity and thinning was a common MRI finding. Hyperintensity in the posterior internal capsule was observed in some of the HDLS patients.