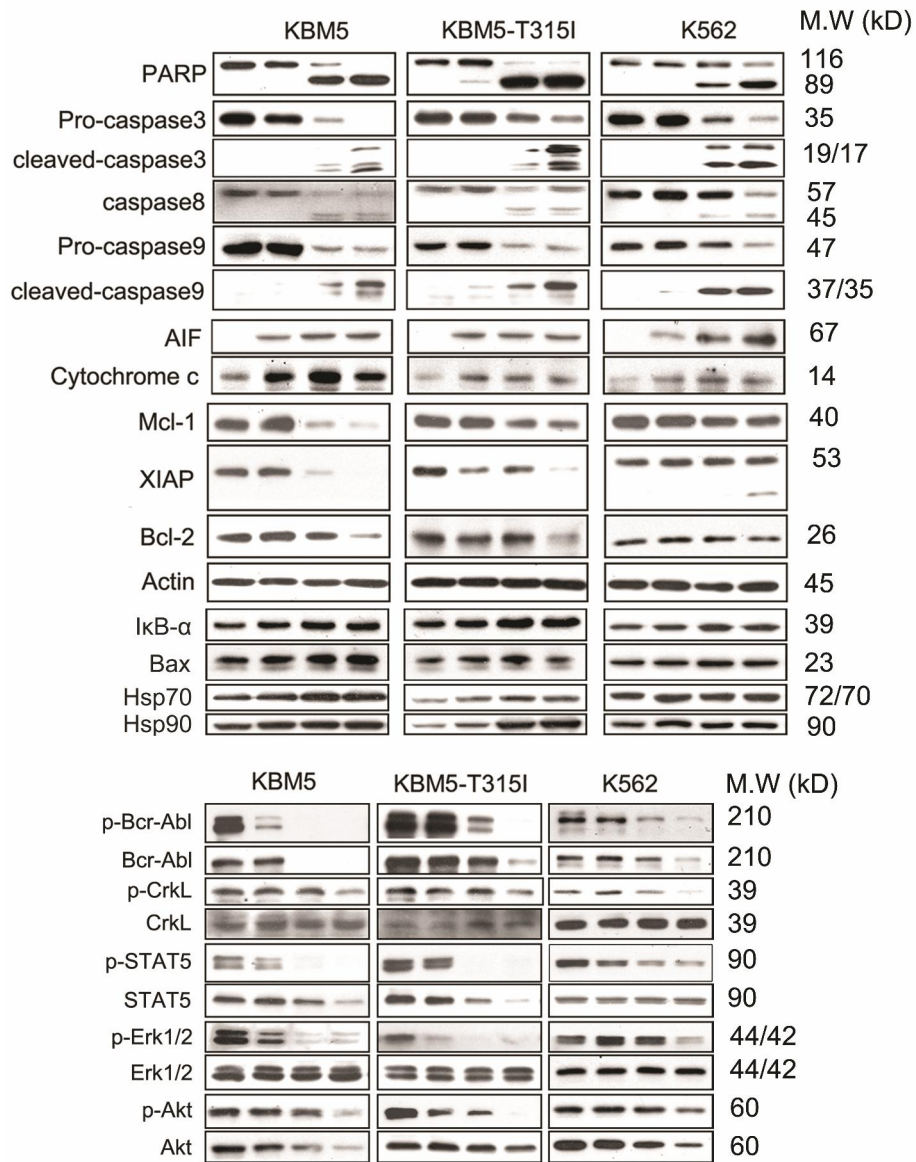


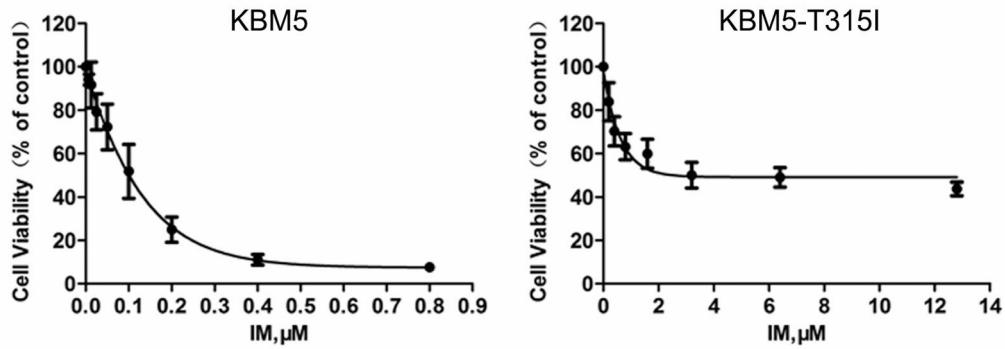
Supplemental Figures and Figure legends

Supplemental figure 1



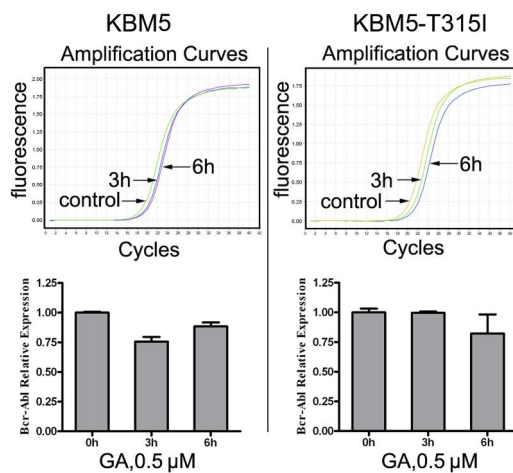
Supplemental figure 1. Molecular weight of proteins. All the molecular weight of proteins detected in this current study were labeled. M.W: molecular weight.

Supplementary figure 2



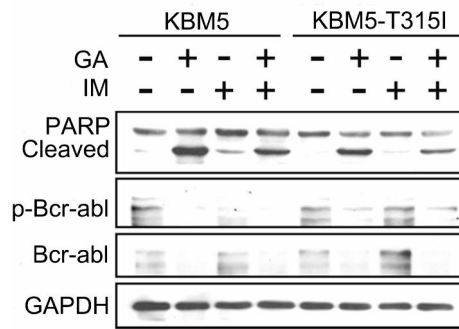
Supplementary Fig. 2. KBM5 and KBM5R cells were exposed to IM in various concentrations for 48 hours, and then were subjected to MTS assay.

Supplementary figure 3



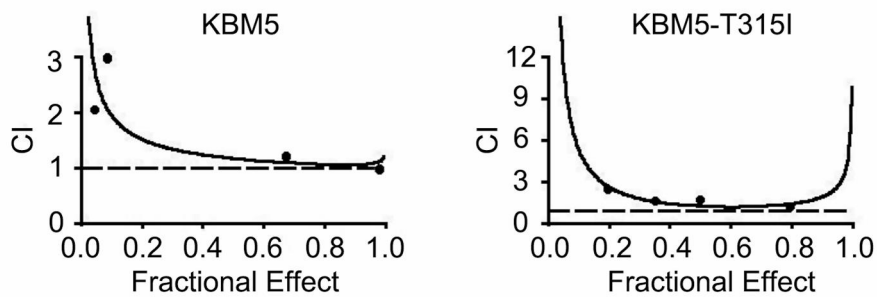
Supplementary Fig. 3. GA does not affect mRNA expression of Bcr-Abl. KBM5 and KBM5R cells were exposed to 0.5 μM GA for 3 or 6 hours. The Bcr-Abl mRNA expression was measured by RT-qPCR and its expression level relative to the control was calculated. Mean \pm SD (n=3).

Supplementary figure 4



Supplementary Fig. 4. KBM5 and KBM5R cells were treated with GA (0.5 μ M) with/without IM (200 nM) for 12 hours. PARP, total and phosphorylated Bcr-Abl were detected by Western blot.

Supplementary figure 5



Supplementary Fig. 5. Synergistic effect of the combination of GA and IM in KBM5 and KBM5R cells was assessed by MTS assay for 48 h. CI is plotted against the fraction affected. A reference line is drawn at CI=1.0. Combination index values < 1.0 correspond to a synergistic interaction.