

Figure S1.

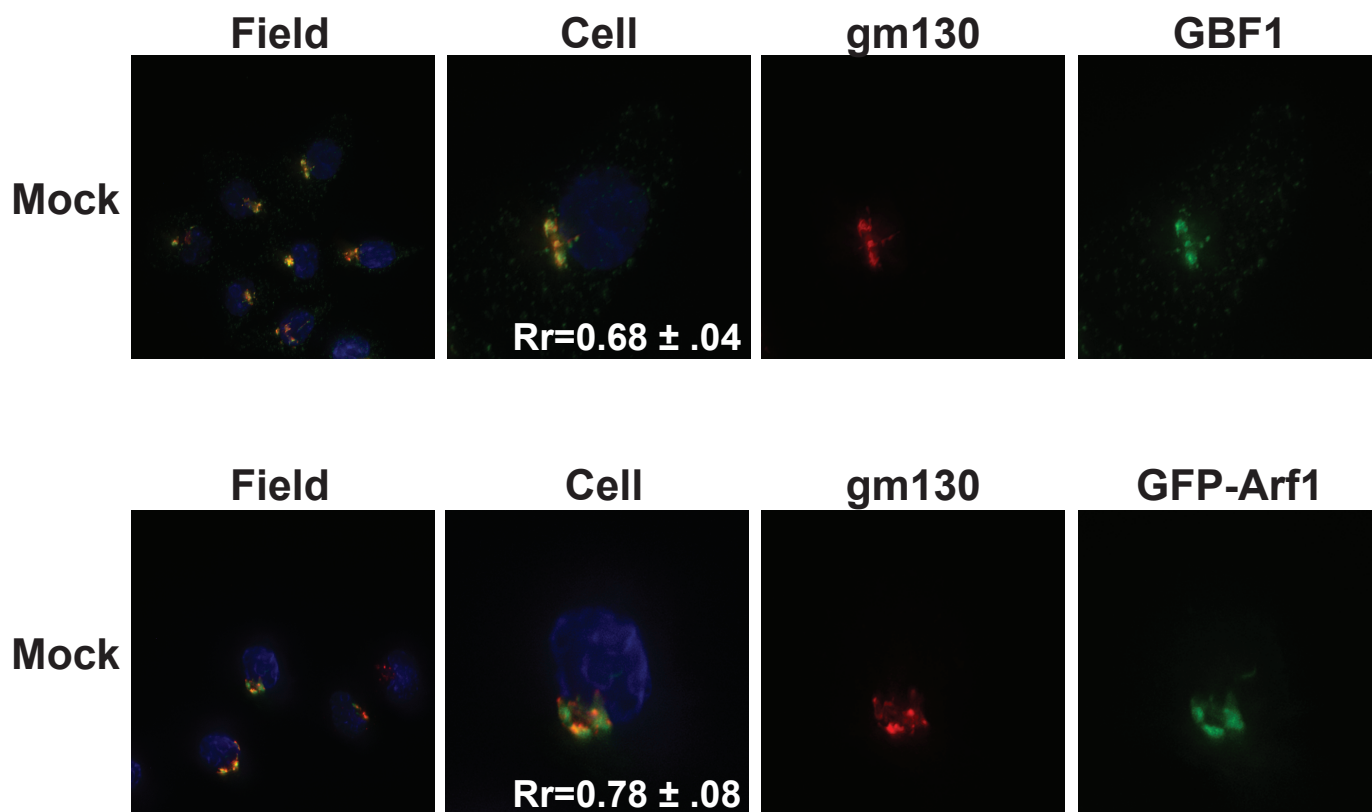


Figure S1. Co-localization of GBF1 and GM130 in uninfected cells. H1-Hela cells were mock-infected, fixed and permeabilized with -20°C Methanol at 6h post-infection. Cells were stained with both with a monoclonal antibody against the Golgi protein GM130 and a polyclonal antibody against the endogenous GBF1.