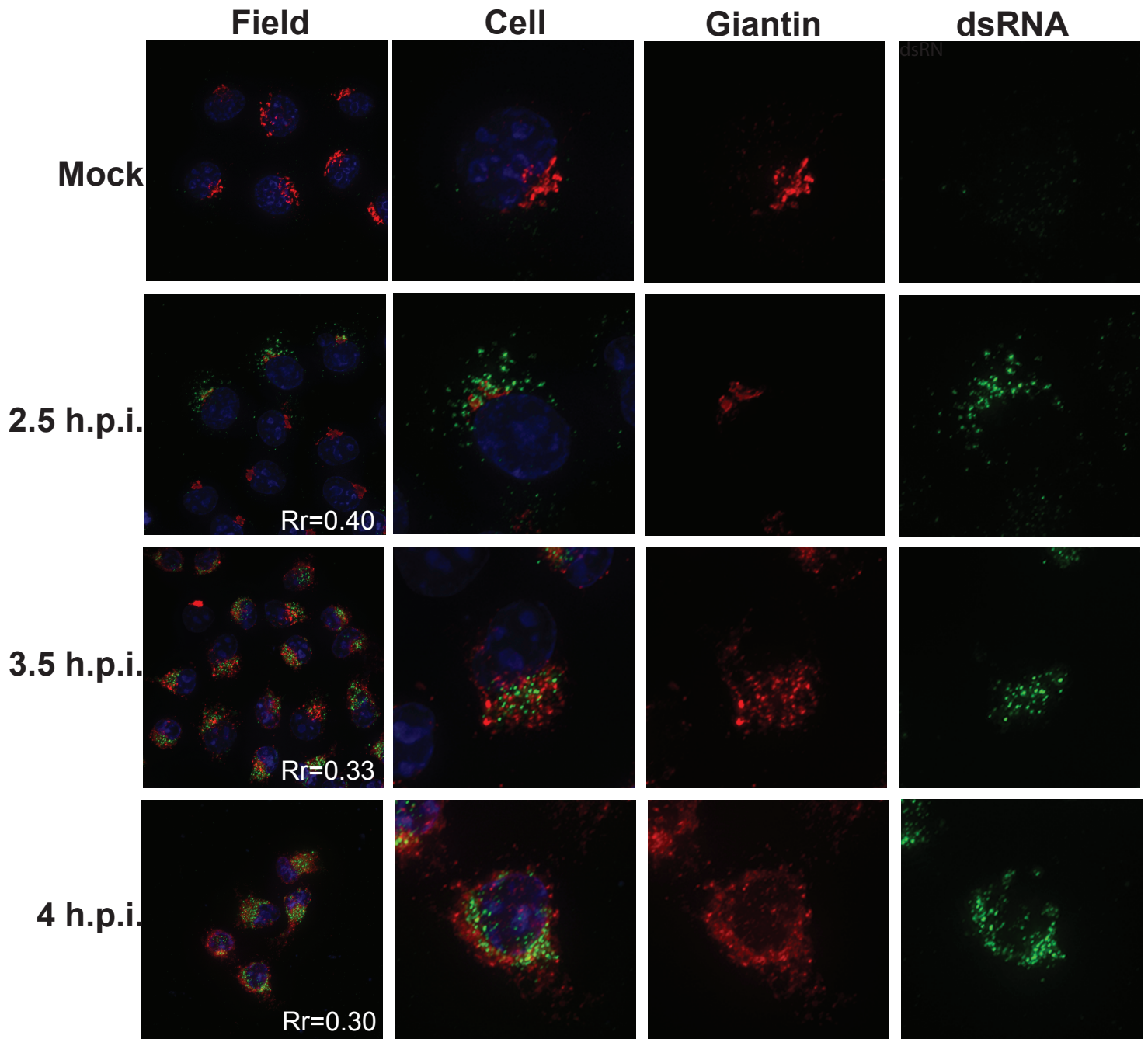


**Figure S3.**



**Figure S3. dsRNA does not co-localize with the Golgi marker Giantin.** H1-Hela cells were infected at an MOI of 50 or mock-infected, then fixed and permeabilized with  $-20^{\circ}\text{C}$  Methanol at the indicated times post-infection. Cells were stained using a monoclonal antibody against dsRNA and a polyclonal antibody against the Golgi protein Giantin.