

Figure S4.

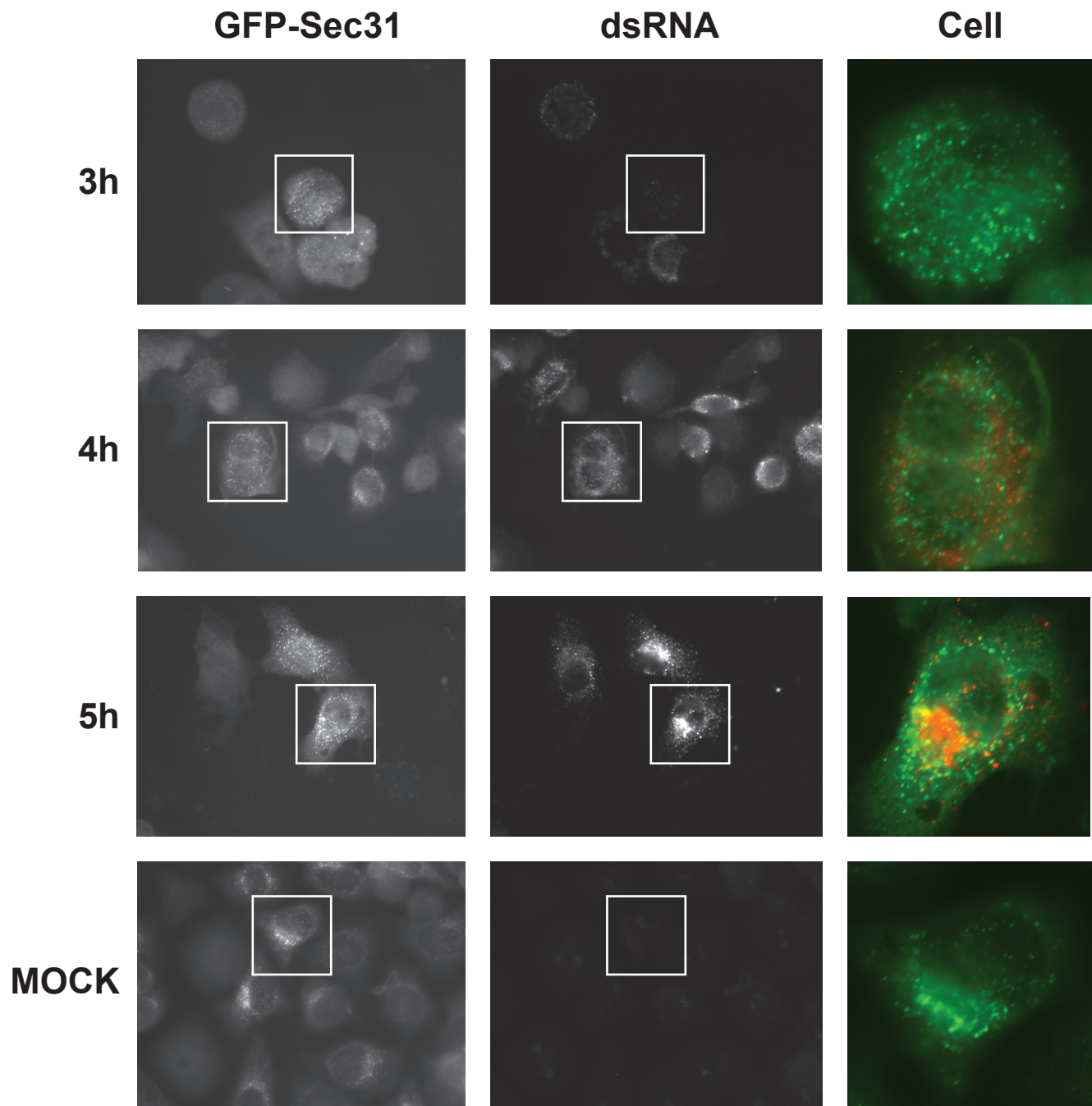


Figure S4. GFP-Sec31 is not recruited to the sites of poliovirus RNA replication. H1-Hela cells were transfected with GFP-LC3, and 24 hours later infected at an MOI of 50 pfu/cell, fixed and permeabilized with -20°C methanol at the indicated times post-infection. Cells were stained using dsRNA antibody for visualization of RNA replication sites.