

Supplementary material for “Accuracy of Computational Cerebral Aneurysm Hemodynamics Using Patient-Specific Endovascular Measurements” by McGah *et al.*
DOI: 10.1007/s10439-013-0930-3

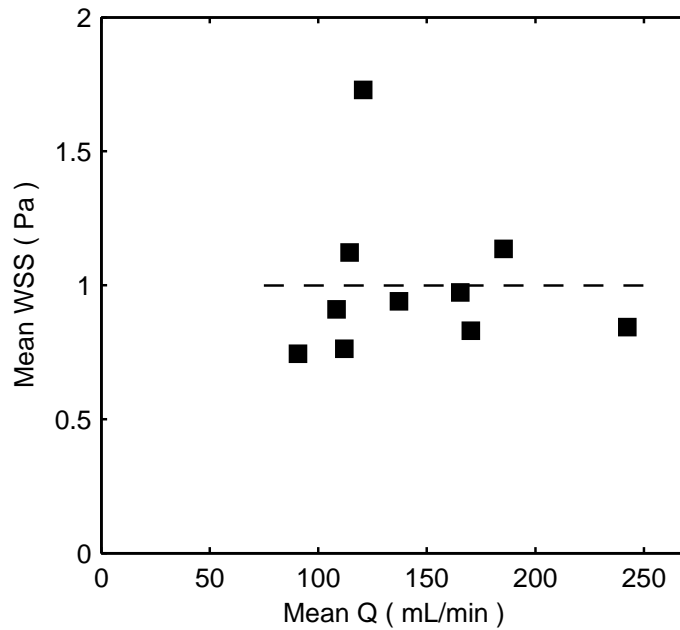


FIGURE S1. Scattergram of mean WSS in the petrous carotid artery vs. mean flow rate in the petrous carotid artery for the case of patient-specific boundary conditions. Dashed line is the inter-subject mean WSS of 1.00 Pa.

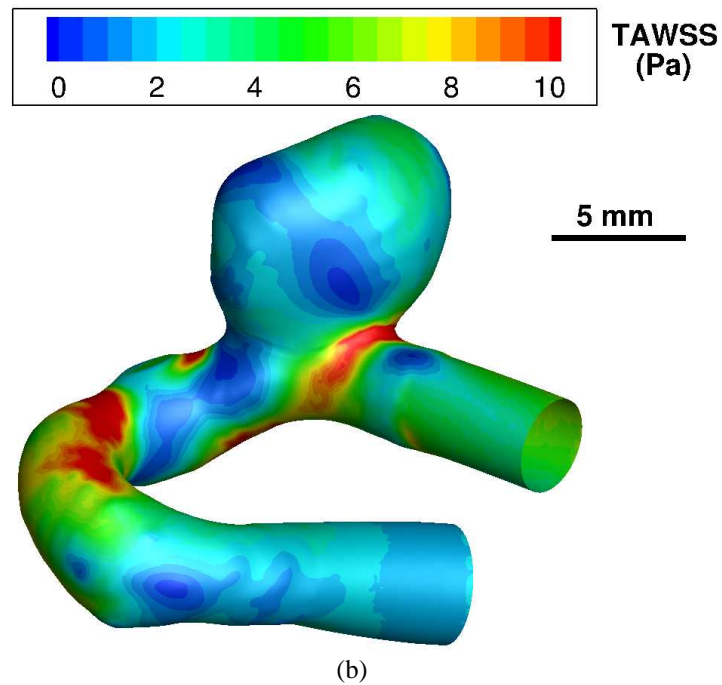
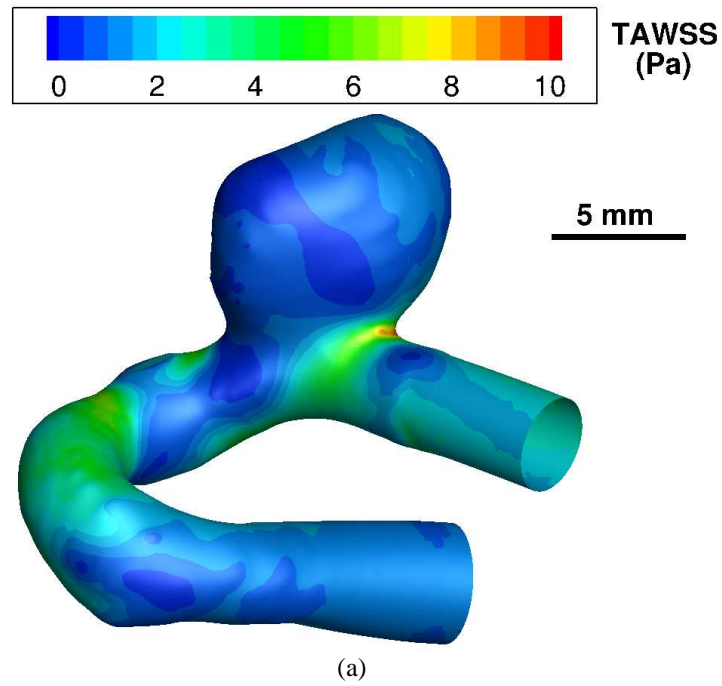


Figure S2. Spatial distributions of the time-averaged WSS (TAWSS), in Pa, for a single patient model (case no. 3). (a) Simulation using patient-specific boundary conditions. (b) Simulation using simplified boundary conditions.