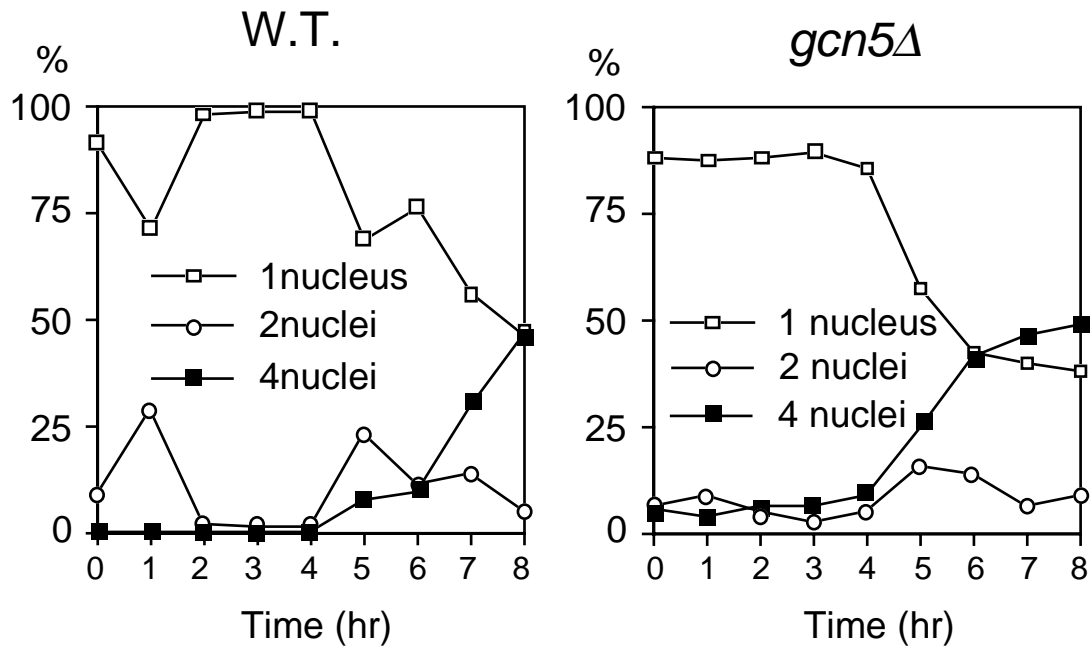


Supplemental data 1 Meiotic progression profiles of *gcn5*⁺ cells and *gcn5* Δ cells



DTY2 (*gcn5*⁺), and DTY9 (*gcn5* Δ) diploid cells were shifted to meiosis. Cells were collected and their nuclei were stained with DAPI every 1 hour. The percentages of cells with one nucleus, and two-four nuclei were indicated. The *gcn5* Δ cells could not be uniformly stained by propidium iodide for unknown reasons, so that we could not analyze DNA content in cells by flow or laser scanning cytometry.