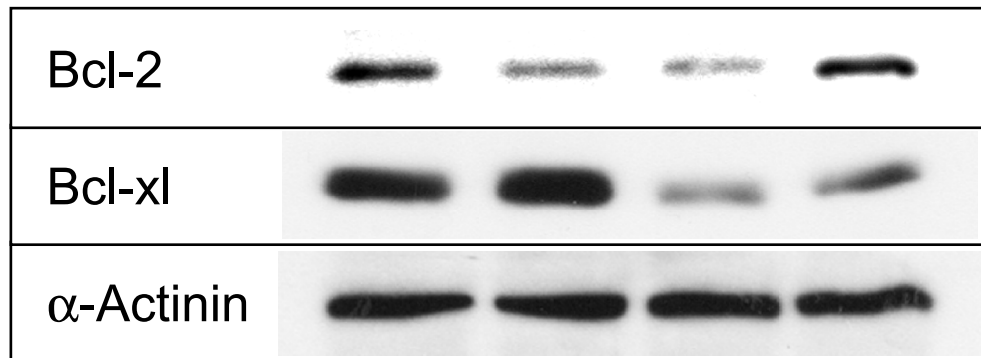
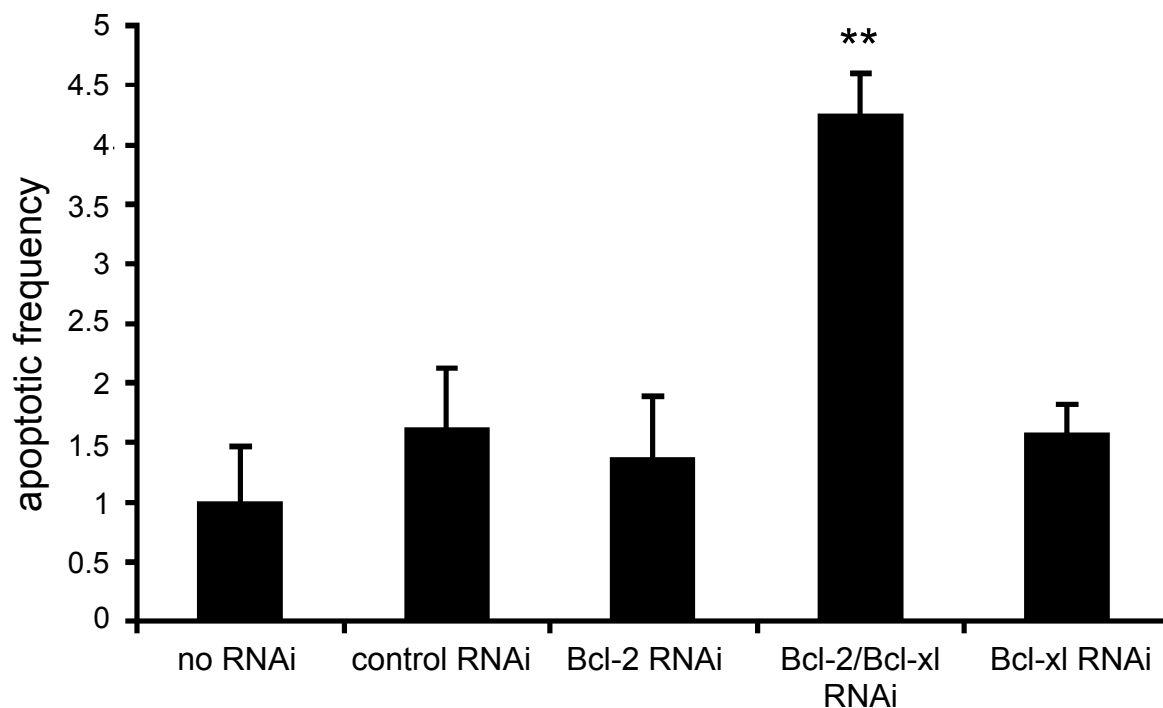


A

control RNAi	+	-	-	-
Bcl-2 RNAi	-	+	+	-
Bcl-xl RNAi	-	-	+	+

**B**

Suppl. Fig. S1: Simultaneous RNAi-mediated knockdown of Bcl-2/Bcl-xl expression increases apoptosis in differentiating ES cells. (A) Wild-type ES cells were transiently transfected with RNAi directed against GluR2 (control), Bcl-2, Bcl-xl or Bcl-2/Bcl-xl, followed by in vitro differentiation for four days. Protein extracts were prepared and subjected to Western blotting with anti-Bcl-2, anti-Bcl-xl and anti- α -actinin antibodies. (B) Apoptosis in wild-type ES cells treated as in (A) was determined by TUNEL staining. Apoptotic frequency in control-transfected cells (no RNAi) was arbitrarily set to one. Results represent the mean of three independent experiments \pm SD (** $p < 0.005$, Student's t-test).