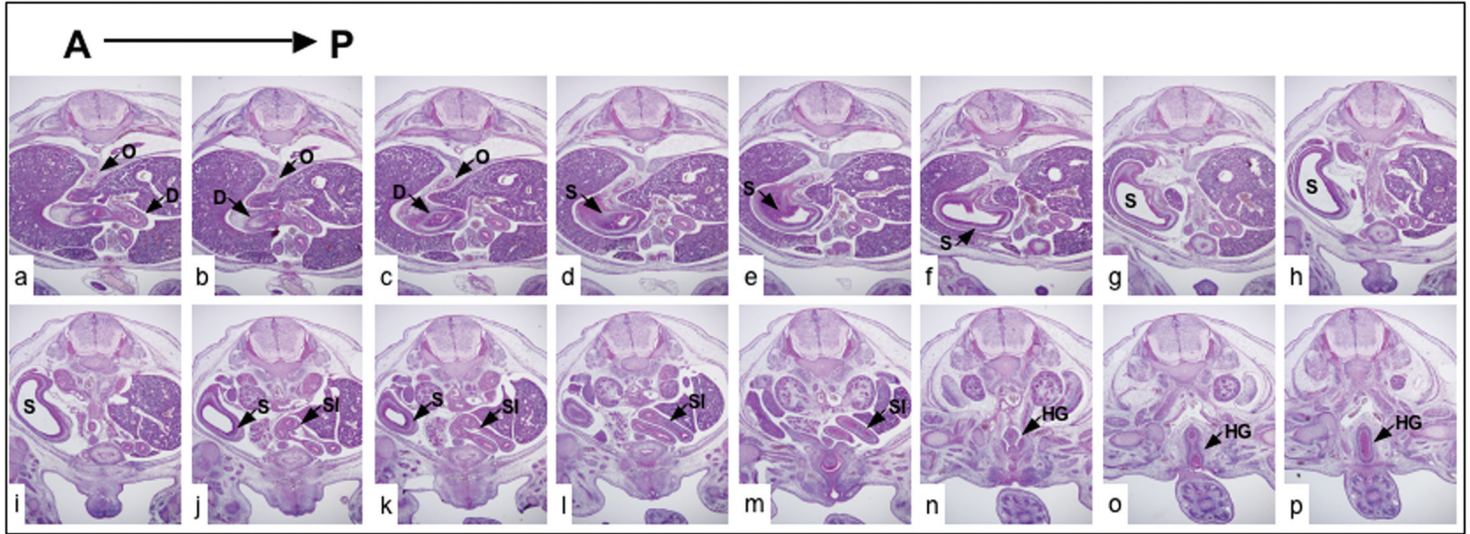
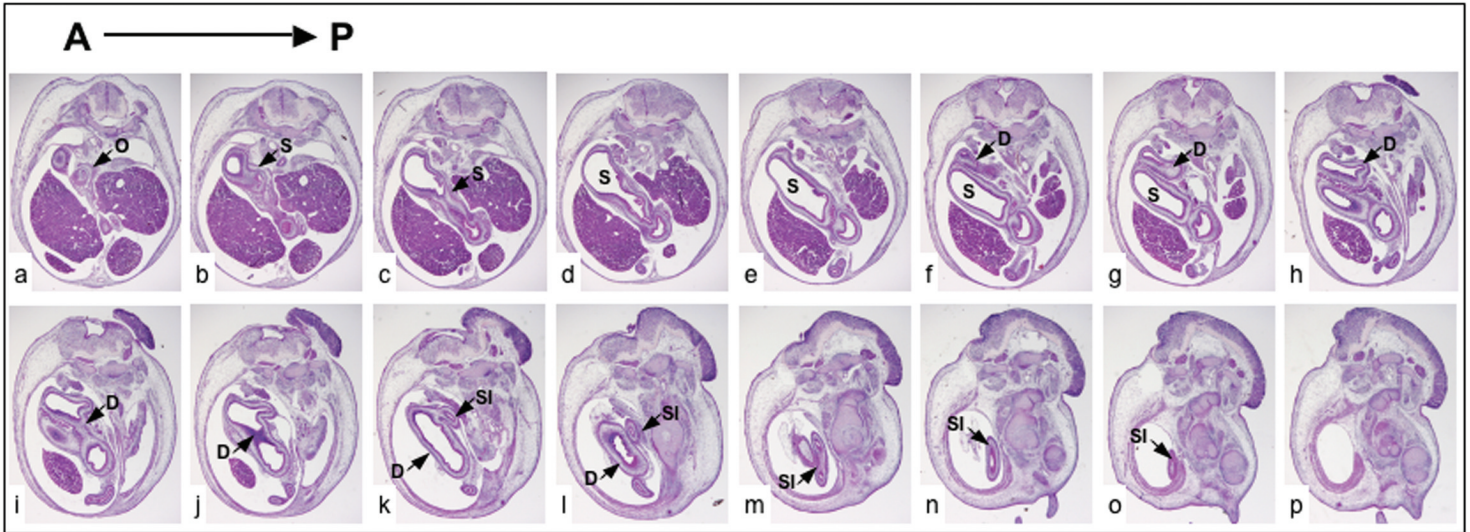


Tcf4^{+/-}/Tcf1^{-/-}



Tcf4^{-/-}/Tcf1^{-/-}



Supplementary Figure 1. Morphology of gastro-intestinal tract of *Tcf4^{-/-}/Tcf1^{-/-}* embryos. Consecutive transverse sections (a-p) from the anterior (A) to the posterior (P) end of *Tcf4^{+/-}/Tcf1^{-/-}* and *Tcf4^{-/-}/Tcf1^{-/-}* embryos. Sections were stained with hematoxylin and eosin. Various structures are identified as follows: (S) stomach, (D) duodenum, (SI) small intestine, (O) oesophagus, (HG) hindgut. As shown in the top panels the morphology of the stomach is normal in *Tcf4^{+/-}/Tcf1^{-/-}* littermates with clear boundaries set by the oesophagus and duodenum. In *Tcf4^{-/-}/Tcf1^{-/-}* mutants the gastro-duodenal junction in *Tcf4^{-/-}/Tcf1^{-/-}* embryos is not clearly defined. Note how in bottom panels m-o the small intestine ends blindly in the abdominal cavity of *Tcf4^{-/-}/Tcf1^{-/-}* embryos.