

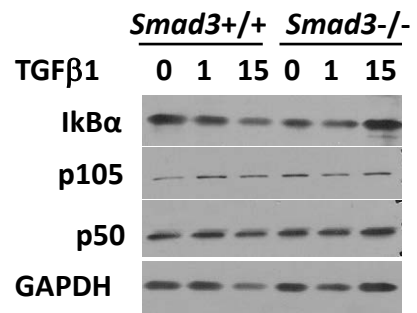
Supplemental Figure Legends

Figure 1. Similar levels of NF κ B signaling pathway components in *Smad3*^{+/+} and ^{-/-} keratinocytes

Immunoblot of indicated NF κ B signaling molecules in total lysates isolated from primary *Smad3*^{+/+} and ^{-/-} keratinocytes treated with TGF β 1 (1ng/ml) for the indicated times. GAPDH levels were used as a loading control.

Figure 2. Lack of NF κ B nuclear translocation but increased NF κ B-luciferase activity in TGF β 1 treated SP1 papilloma cells

A) Immunoblot of NF κ B p65 and p50 in nuclear extracts isolated from SP1 papilloma cells treated with 1 ng/ml TGF β 1 for the indicated times. (B) pNF κ B-luc reporter activity in SP1 papilloma cells treated with TGF β 1 (1 ng/mL) for 24 hours. N=3. * indicates significantly different from untreated, p<.05.



Supplementary Figure 1

