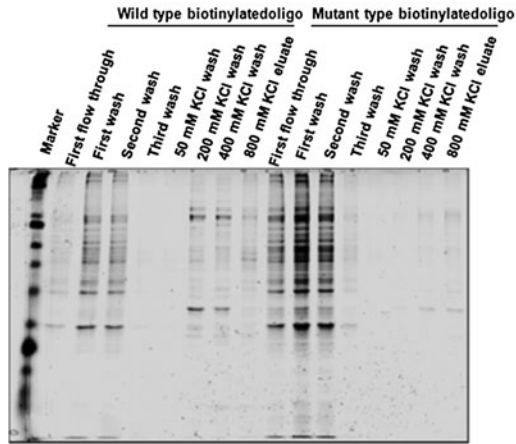
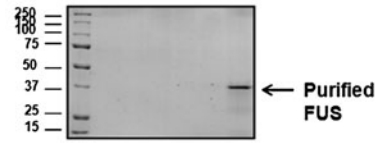


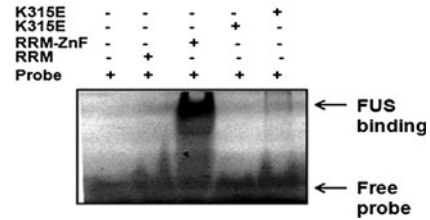
A CBB staining



B Purified FUS



C EMSA



SUPPLEMENTARY FIG. S2. Purified proteins and DNA binding. (A) Proteins are purified by affinity chromatography and stained with Coomassie brilliant blue. (B) SDS-PAGE electrophoresis of purified truncated FUS protein. This recombinant protein corresponds to amino acids 262–526 of human FUS/TLS containing His-tag at the N-terminal region and the predicted size is 29 kDa as shown on the gel after Coomassie brilliant blue staining. (C) Electrophoretic mobility shift.