

SUPPLEMENTAL DATA

Supplemental Figure 1-3

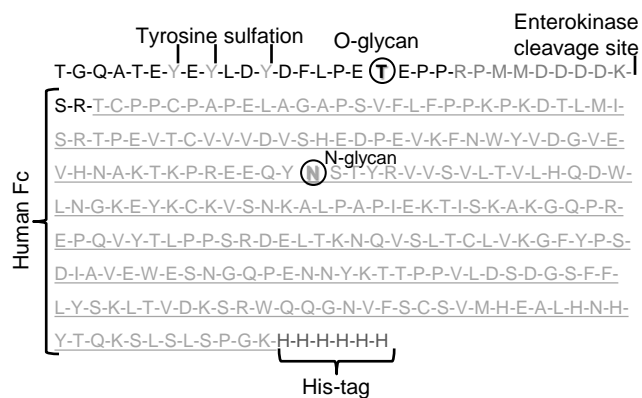
Supplemental Video A: Confocal stack of HEK-PPG-19Fc[FUT7⁺] labeled with a FITC conjugated goat anti-human IgG antibody (F(ab')₂ fragment). 19Fc[FUT7⁺] is localized on cell membrane.

Supplemental Video B: Confocal stack of MSC-PPG-19Fc[FUT7⁺] labeled with a FITC conjugated goat anti-human IgG antibody (F(ab')₂ fragment). 19Fc[FUT7⁺] is localized on cell membrane.

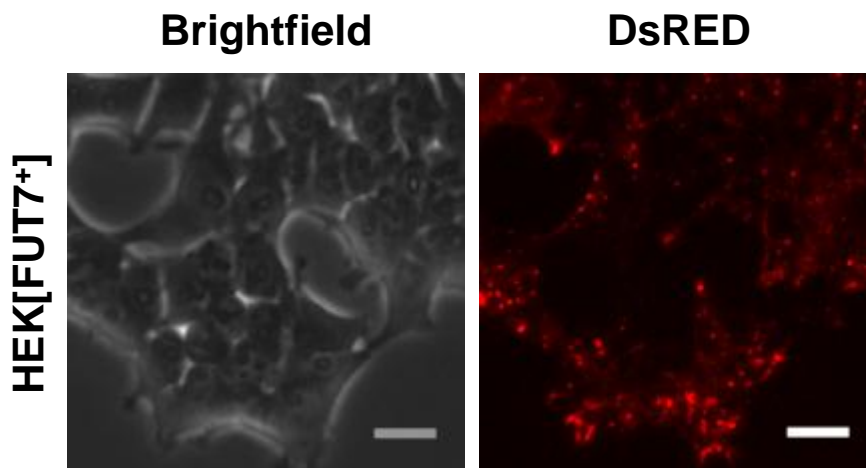
Supplemental Video C: MSCs captured on stimulated HUVEC cells at 2 dyn/cm².
Representative movie of Figure 5B

Supplemental Video D: MSCs captured on stimulated HUVEC cells at 0.5-4 dyn/cm² under continuous flow conditions. Representative movie of Figure 6A

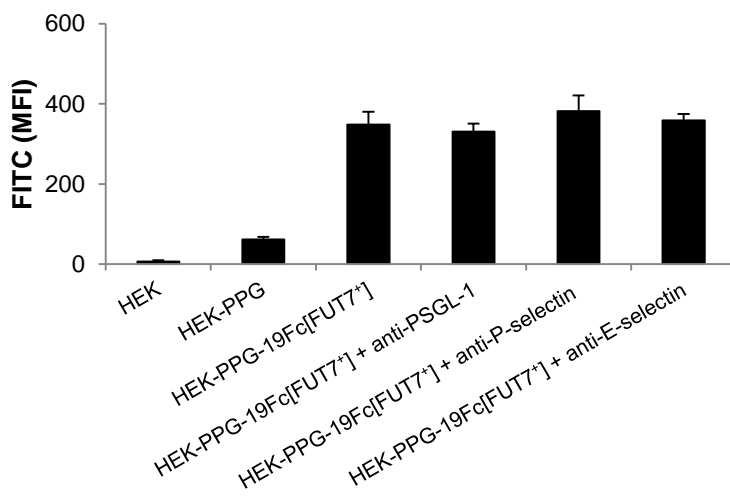
Supplemental Video E: MSCs retained on stimulated HUVEC cells at 0.5-10 dyn/cm² after capture under static conditions. Representative movie of Figure 6B



Supplemental Figure S1: 19Fc[FUT7⁺] protein sequence showing site for O- and N-glycosylation.



Supplemental Figure S2: Expression of FUT7-DsRED fusion protein in HEK intra-cellular compartments. Scale = 20 μ m



Supplemental Figure S3: Blocking antibodies do not displace 19Fc[FUT7⁺] bound to cells. FITC conjugated goat anti-human IgG antibody was used to detect 19Fc[FUT7⁺]. As its signal does not change with the addition of blocking antibodies, 19Fc[FUT7⁺] is not displaced by the blocking antibodies. HEK-PPG-19Fc[FUT7⁺] are not significantly different from HEK-PPG-19Fc[FUT7⁺] + anti-PSGL-1, HEK-PPG-19Fc[FUT7⁺] + anti-P-selectin, and HEK-PPG-19Fc[FUT7⁺] + anti-E-selectin.