

Supplemental FIG. 1. Cre recombinase activity in Hcn4-CreERT2 mice crossed with R26R mice during development. Tamoxifen was administrated at E8.5 once, and X-gal staining was performed at E12.5.

Supplemental FIG. 2. Cre recombinase activity in the postnatal heart. Tamoxifen was administrated at E16.5, and X-gal staining was performed at P2. RA, right atrium; LA, left atrium; AO, aorta; CS, coronary sinus; LV, left ventricle; RV, right ventricle; AS, interatrial septum; MV, mitral valve; TV, tricuspid valve

Supplemental FIG. 3. Cre recombinase activity in the other organs. Tamoxifen was administrated at 1-month and the Cre activity was analyzed by X-gal staining.

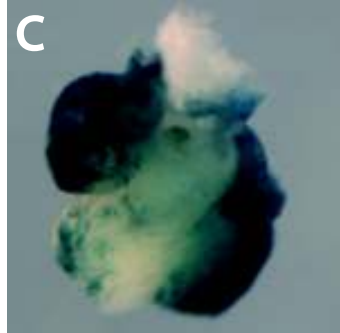
Supplemental FIG. 4. Fate mapping of *Hcn4*<sup>+</sup> progenitor cells using Hcn4CreERT2:R26R.

Tamoxifen was administrated at E7.5 once, and X-gal staining was performed at E16.5.

Type of file: figure

Label: SupplementaryFig1

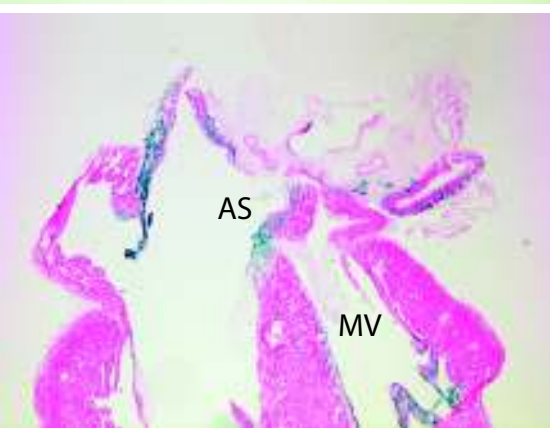
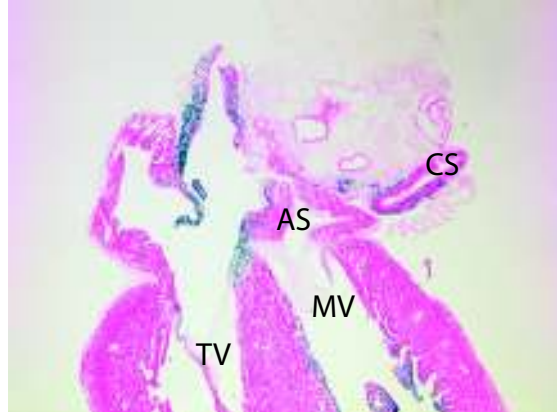
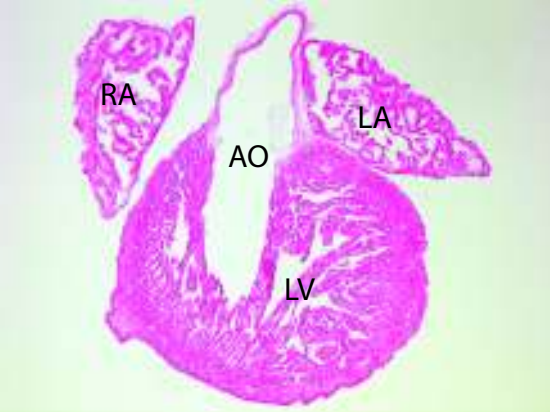
Filename: SupplementalFIG1.eps



Type of file: figure

Label: SupplementaryFig2

Filename: SupplementalFIG2.eps



Type of file: figure

Label: SupplementaryFig3

Filename: SupplementalFIG3.eps

brain



kidney



liver



lung



spleen





Type of file: figure

Label: SupplementaryFig4

Filename: SupplementalFIG4.eps



ventral view



dorsal view