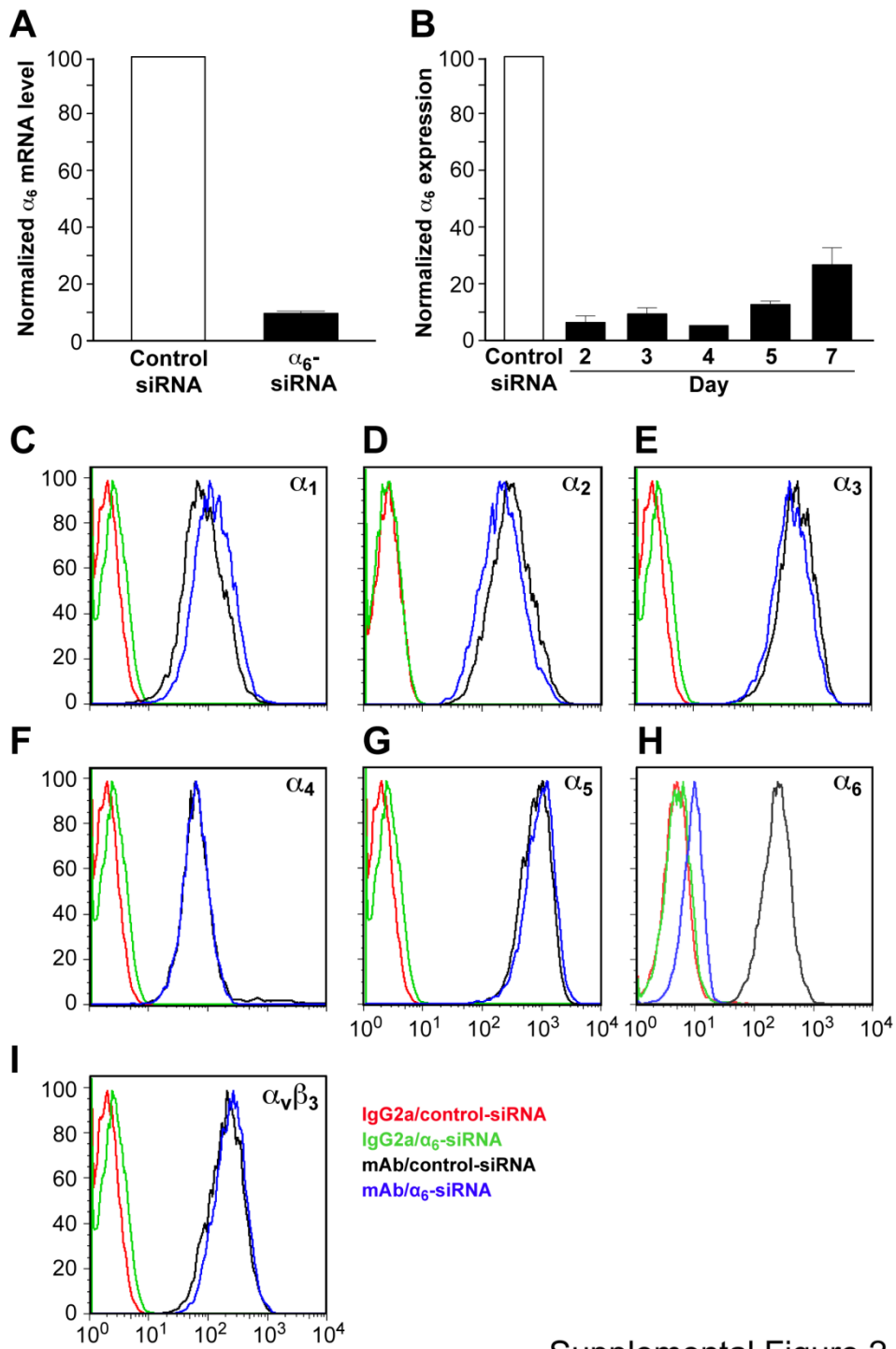


Supplemental Figure 1

Supplemental Figure 1

- A-** Proliferation of HemSC cultured in EBM-2/20% over 4 days. Cellular phosphatase activity was the same when the cells were plated on fibronectin or laminin.
- B-** Proliferation of HemSC cultured in EBM-2/20% over 4 days evaluated by measuring cellular phosphatase activity. Proliferation on fibronectin-coated wells not affected by blocking mAb against α_6 -integrin.
- C-** Adhesion assay: cells allowed to adhere to fibronectin or laminin for 20 minutes. Number of adherent cells determined by *p*-NPP assay
- D-** Adhesion assay: cells allowed to adhere to fibronectin for 20 minutes. Number of adherent cells determined by *p*-NPP assay. In contrast to laminin (Figure 2C), adhesion on fibronectin was not affected by blocking mAb against α_6 -integrin.



Supplemental Figure 2

Supplemental Figure 2: Assessment of siRNA efficiency and specificity by qRT-PCR (A) and flow cytometry (B-I)

A - HemSC cultured and transfected as described in Materials and Methods. At various times after transfection, quantity of $\alpha 6$ -integrin subunit mRNA was determined by RT-qPCR.

B - $\alpha 6$ -integrin protein expression at cell surface measured by flow cytometry from 2-to-7 days. Results for HemSC transfected siRNA $\alpha 6$ integrin normalized to control siRNA-transfected HemSC. Results reported as means \pm S.E.M. of three different experiments. $\alpha 6$ -Integrin subunit protein expression reduced on HemSC transfected with siRNA $\alpha 6$ (about 10% of control value from day 2 to day 5 and 20% after 5 days).

C-H - At day 3 after siRNA transfection, quantity of $\alpha 6$ -integrin subunit measured by flow cytometry (H) and compared to cell surface expression of integrins $\alpha 1$ (C), $\alpha 2$ (D), $\alpha 3$ (E), $\alpha 4$ (F), $\alpha 5$ (G), $\alpha v\beta 3$ (I) to verify the specificity of siRNA $\alpha 6$ integrin transfection. No reduction in cell surface expression of other integrins observed. Isotype-matched control IgG2a binding to control siRNA-transfected shown as a red line and to $\alpha 6$ -siRNA transfected HemSC as a green line. Integrin mAb binding to control siRNA transfected HemSC shown as a black line and to $\alpha 6$ -siRNA transfected HemSC as blue line.