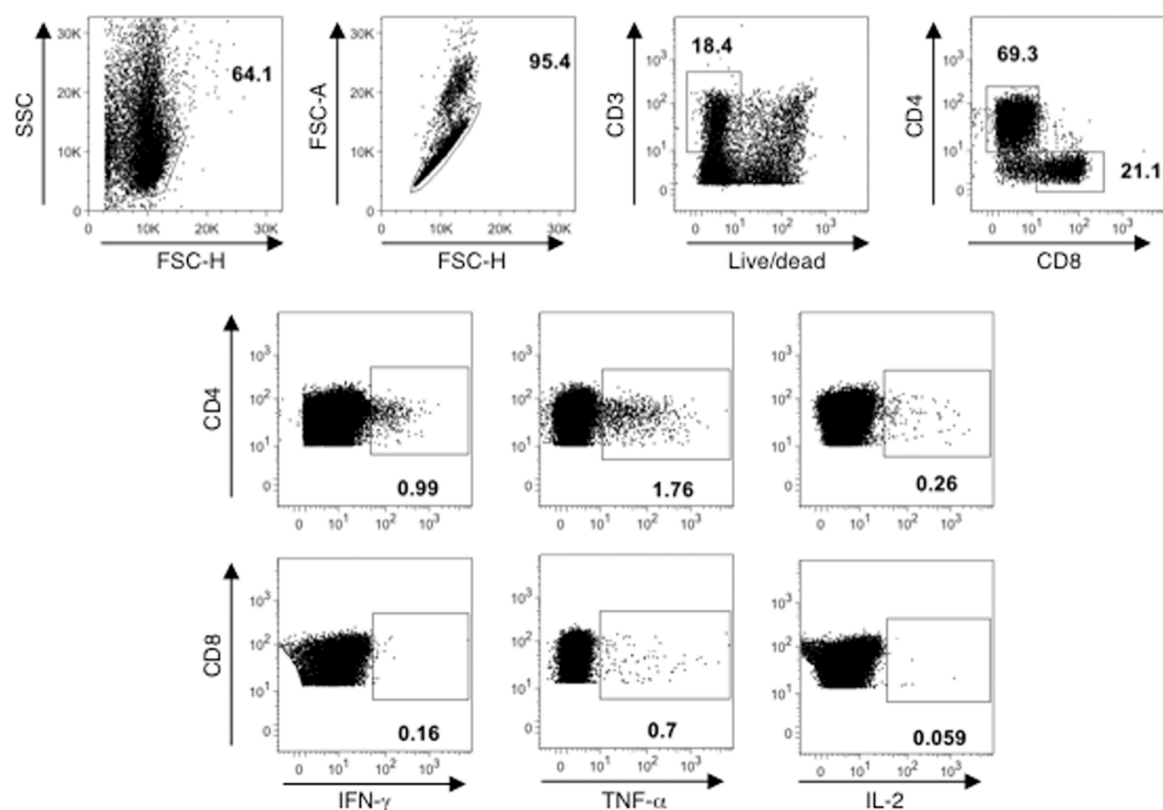


# Figure S1

## A



## B

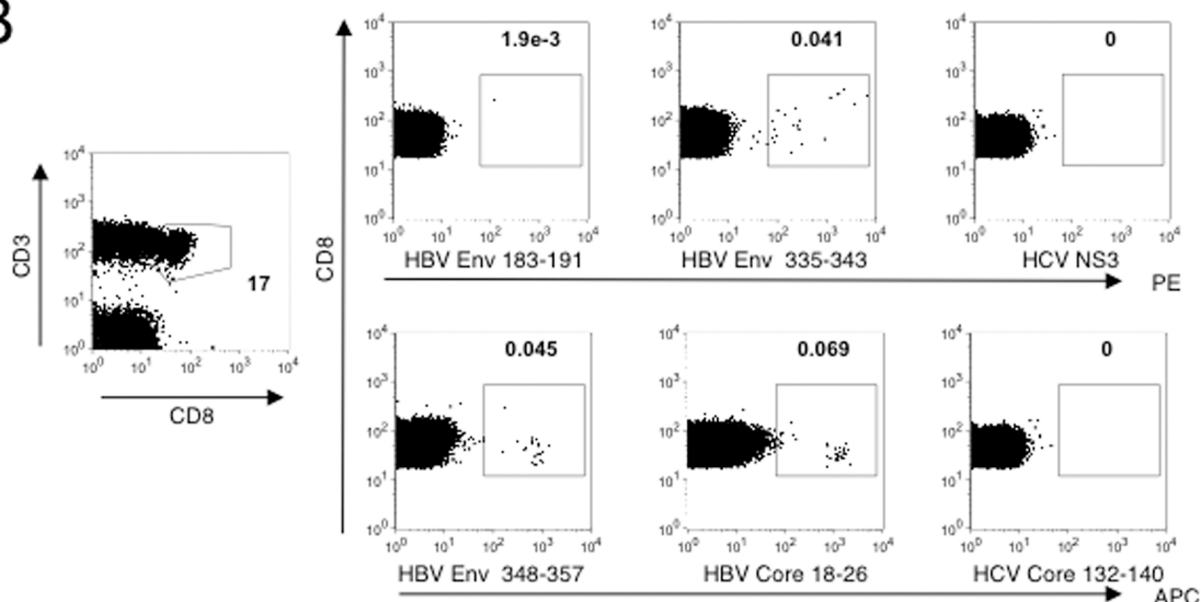
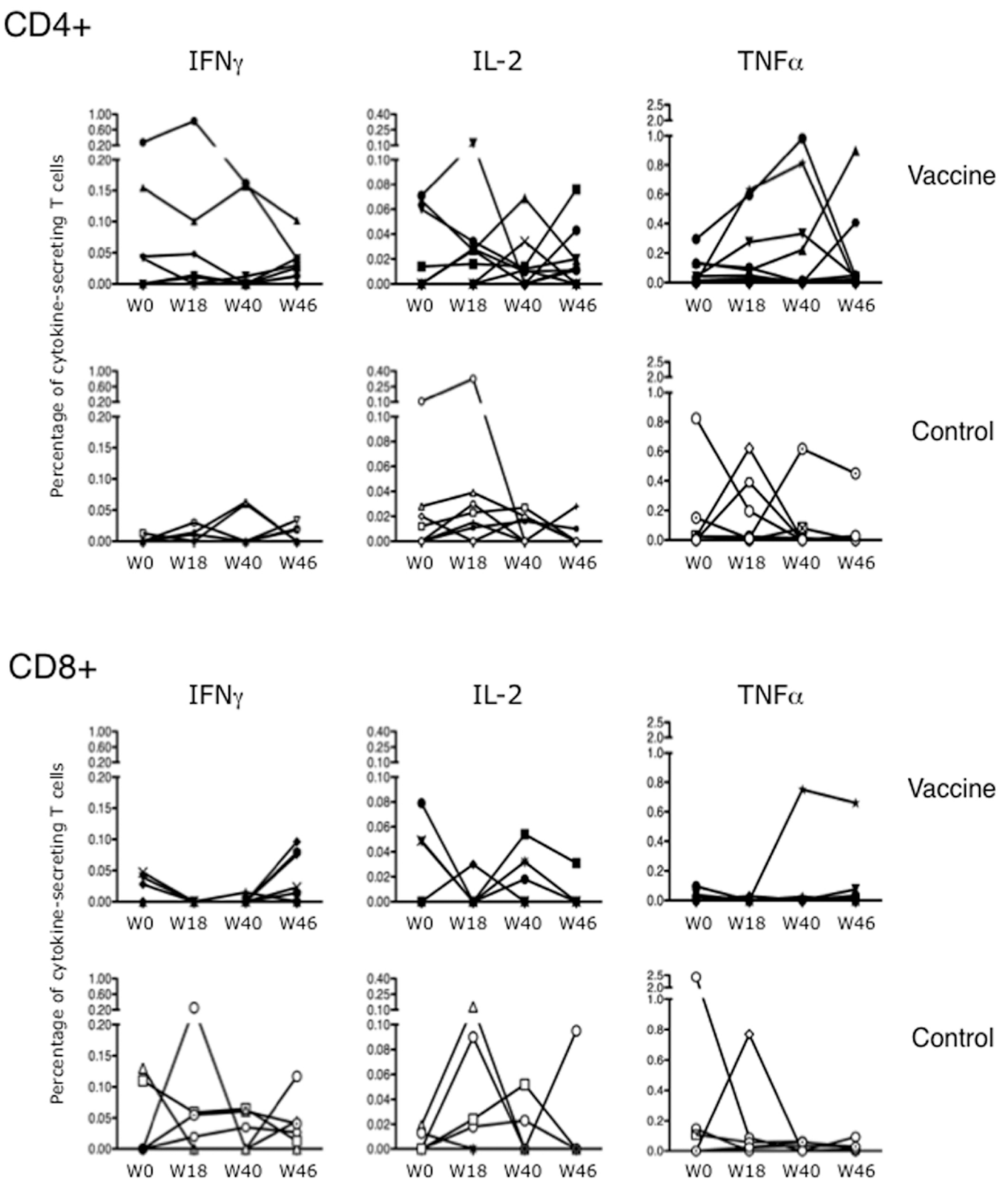


Figure S1: The gating strategy for detection of HBV- specific T cells by intracellular (A) or pentamer staining (B). (A) The consecutive gating strategy is shown. Cells were gated for lymphocytes according to forward and side scatter properties. Following doublet exclusion, cells were further gated on living CD3+ lymphocytes and from there, CD4+ and CD8+ subsets were identified. For each of those two subsets, cells producing IFN- $\gamma$ , TNF- $\alpha$  and IL-2 were subsequently identified. (B) CD8+ T cells were stained with a combination of HLA-A2 pentamers loaded with peptides derived from HBV-core and envelope proteins. As a gating control cells were also stained with an HLA-A2 pentamer loaded with an irrelevant HCV peptide (see Material and Methods).

# Figure S2



**Figure S2: Individual kinetics of the production of envelope-specific Th1 cytokines after in vitro stimulation.** Percentage of IFN- $\gamma$  (left panels), IL-2 (middle panels) and TNF- $\alpha$  (right panels) produced by either CD4+ (upper panels) or CD8+ (lower panels) T cells and evaluated from W0 to W46 in vaccine and control groups, respectively. Each line represents an individual patient with at least one positive response.