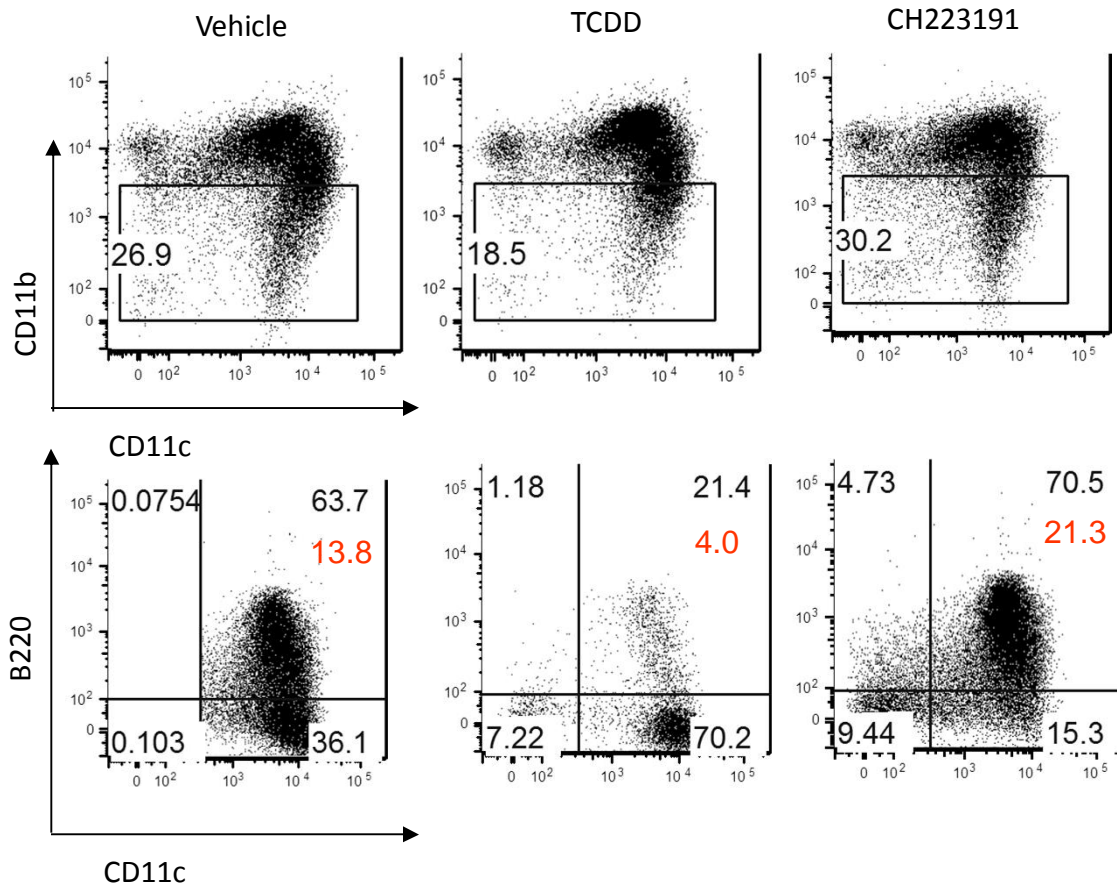


Supplemental Figure 1. Gating strategy used in experiments. **A.** Analysis of splenocytes. **B.** Analysis of cells generated *in vitro* from HPC. Gates are set based on staining with isotype control IgG (not shown).



Supplemental Figure 2. Effect of regulation of Ahr signaling on pDC differentiation *in vitro*. HPCs were cultured with 100 ng/ml Flt3L for 9 days in the presence of 10nM TCDD, 1mM CH223191, or vehicle. Typical FACS plots are shown. Numbers in red represent the proportion of pDCs calculated from all live cells.