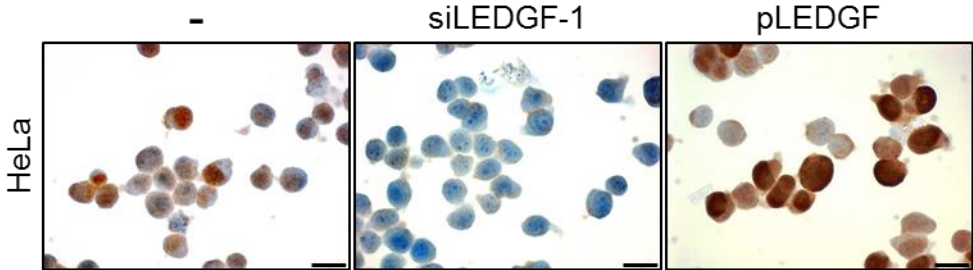


**Supplemental Figure S1.**



**Validation of anti-LEDGF antibody 6E4.** Untreated HeLa cells (-), HeLa cells transfected siLEDGF-1, and HeLa cells overexpressing LEDGF from pLEDGF were prepared on thin-layer cytology slides and stained for LEDGF expression. Bars correspond to 20  $\mu$ m.