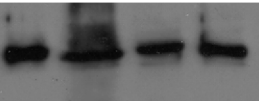


MOL CAS2 SPR1 SPI



CAR1 CAR2 CER FAM PLA MIN1 MOCK Fv1ⁿ Fv1^b

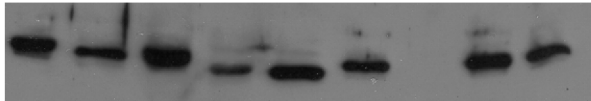


Figure S2

Western blot analysis of *Mus dunni* cells transduced with *Fv1s* from wild mice. MDTF cells were transduced with retroviral vectors carrying the *Fv1* gene from wild mice and the EYFP marker such that 50% of the cells were transduced, as determined by flow cytometry. A western blot analysis was performed 3 days post transduction using 25 μg of total protein from the cell extracts as previously described (48).