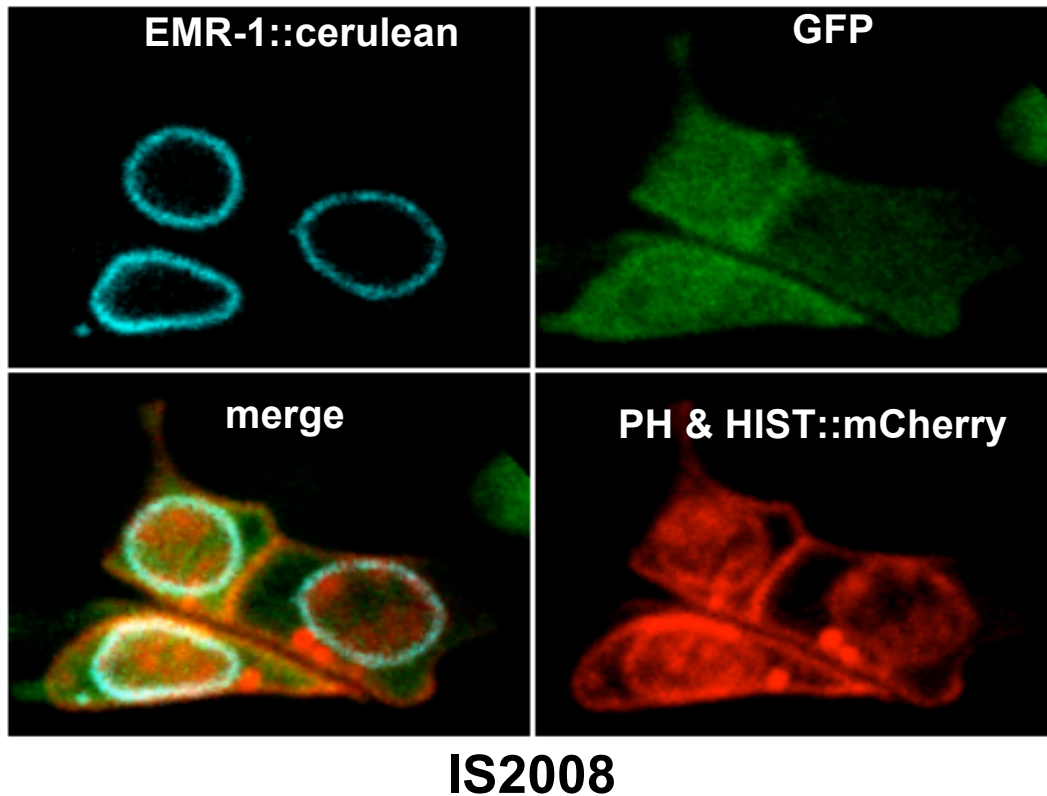


a-



b-

line/localization	GFP in the whole cell	mCherry::PH at the cell membrane	EMR-1::cerulean at the nuclear membrane	HISTONE::mCherry in the nucleus
IS2008 (n=267)	100%±0%	100%±0%	99,26%±1,28%	96,69% ±0,36%
IS2070 (n=207)	100%±0%	100%±0%	100%±0%	99,04% ±0,83%

Figure S5 a- Additional line IS2008 expressing 5 different functional products in the Y, B and F rectal cells. All the markers are addressed to the expected cellular compartments: whole cell (GFP), nucleus and plasma membrane (mCherry) and nuclear envelope (cerulean). In addition, note that the rescuing efficiencies obtained with this line or IS2070 are similar or higher to those obtained with *col-34p::sem-4a::HA::SL2::mCherry* [17,25%±2,49%; n=192 (IS1648) and 12,05%±2,5%; n=126 (IS1649)](Kagias *et al.* 2012). Anterior is to the left and ventral to the bottom. **b-** Quantification of the expected localization for each of the fluorescent protein, in the two transgenic lines IS2008 and IS2070; n= total number of cells scored.