

# Molecular characterization of ESBL-producing Enterobacteriaceae in the Northern Portugal

## SUPPLEMENTAL MATERIAL

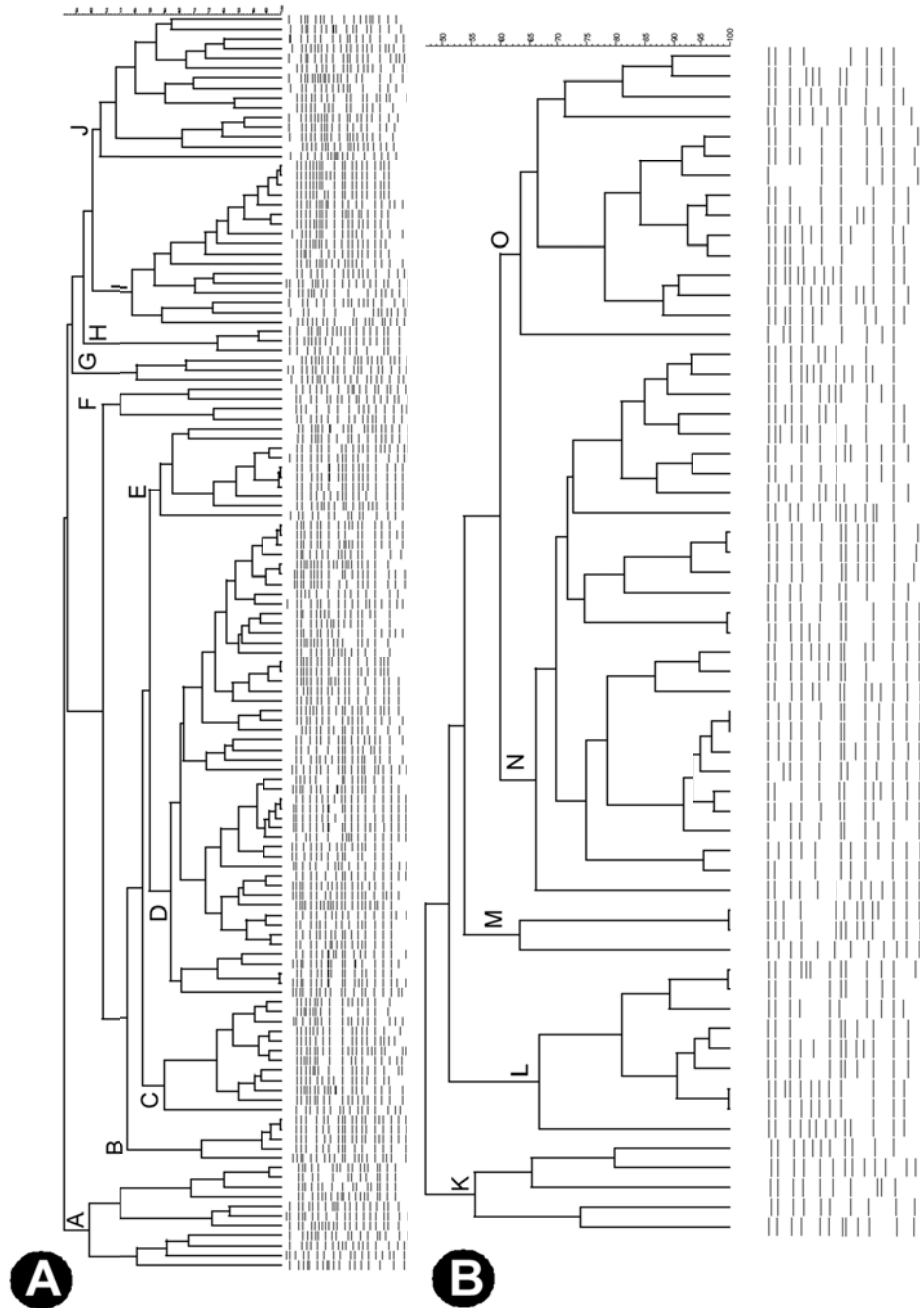


Figure: Enterobacterial repetitive intergenic consensus (ERIC) patterns of A: *Escherichia coli* and B: *Klebsiella pneumoniae*. This image shows high diversity among extended-spectrum beta-lactamases. Clusters A to H refer to ESBL-encoding *E. coli*. Clusters K to O refer to ESBL-encoding *K. pneumoniae*.