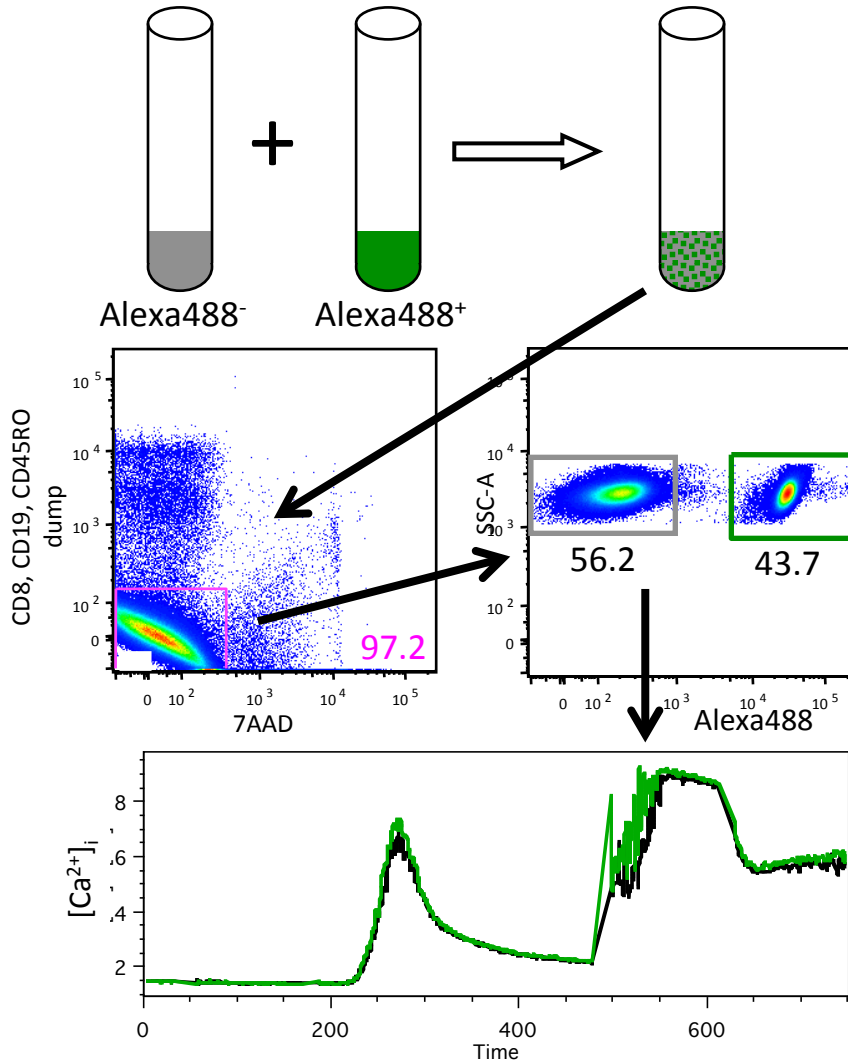


Supplemental Figure 1. Fluorescence labeling for measurement of calcium flux.



Samples were unlabeled or labeled with Alexa 488 succinimidyl ester, an amine-reactive dye for 20 minutes. A labeled and an unlabeled sample were then combined, loaded with indo-1, stained with anti-CD8, anti-CD19, and anti-CD45RO, and assayed for calcium flux. A kinetics plot is shown for a labeled (green) and unlabeled (black) aliquot from the same donor. The labeled and unlabeled aliquots overlay. For all experiments, a dye swap was performed with an unlabeled adult sample combined with a labeled umbilical cord blood sample and an unlabeled umbilical cord blood sample combined with a labeled adult sample.