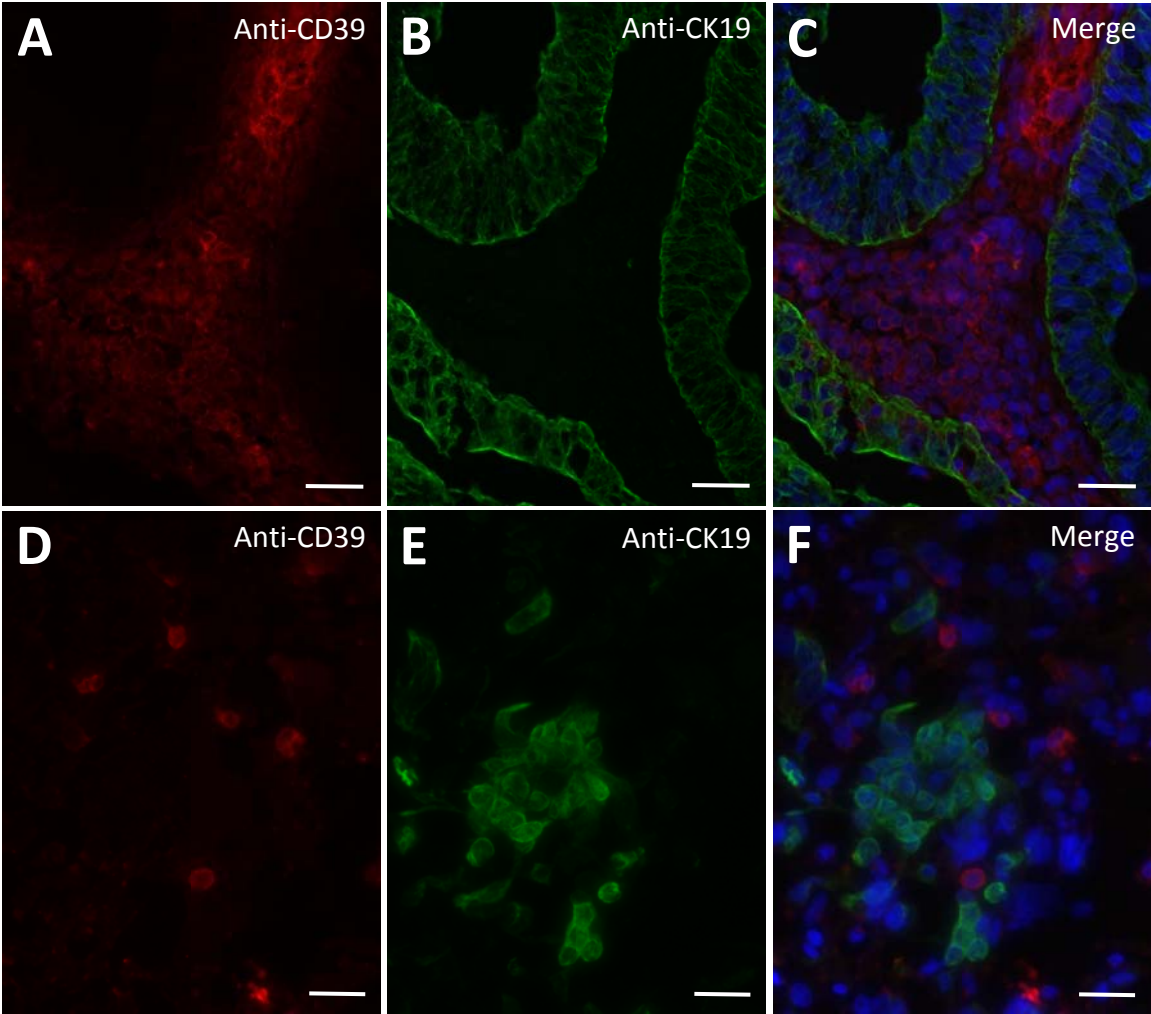


### **Supplementary figure legends**

**Supplementary figure 1.** Immunolocalization of NTPDase1/CD39 and cytokeratin 19 (CK19) in human endometrioid adenocarcinomas (A-C) and endometrial touch preparations (D-F). CD39 (red) was localized in the stroma (A, D) and CK19 (green) in the epithelial cells (B, E). Merge images show that there is no colocalization between CD39 and CK19 (C, F). Scale bars = 25  $\mu\text{m}$  (A-C) and 50  $\mu\text{m}$  (D-F).

**Supplementary figure 2.** Immunolocalization of ecto-5'-nucleotidase/CD73 and cytokeratin 19 (CK19) in human endometrioid adenocarcinomas (A-C) and endometrial touch preparations (D-F). CD73 (red) was mainly localized in the apical domain of glands (A, D) whereas CK19 (green) labelled completely the glandular epithelium (B, E). Merge images show, in yellow, colocalization between CD73 and CK19 (C, F). Scale bars = 20  $\mu\text{m}$  (A-C) and 40  $\mu\text{m}$  (D-F).

Supplementary figure 1



## Supplementary figure 2

