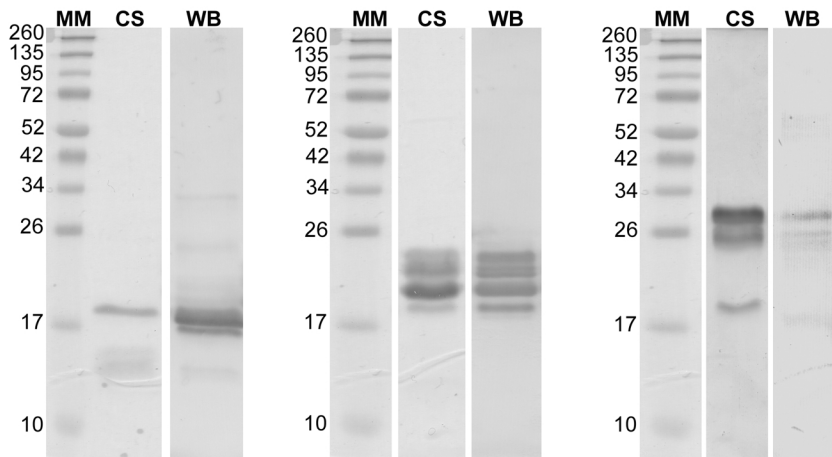


Tp0750\_G<sup>23</sup>-A<sup>199</sup> (tagless)Tp0750\_G<sup>23</sup>-A<sup>199</sup> (His-tagged)Tp0750\_G<sup>23</sup>-D<sup>223</sup> (His-tagged)

### Figure S1. Soluble expression of Tp0750.

Purified soluble recombinant Tp0750\_G<sup>23</sup>-A<sup>199</sup> (tagless and His-tagged) and Tp0750\_G<sup>23</sup>-D<sup>223</sup> (His-tagged) were expressed and purified using an *E. coli*-based expression system. Residues G23-A199 represents the vWFA domain-containing mature protein (signal peptide M1-A22 removed) truncated at a predicted unstructured C-terminal proline-rich region (A200-D223), whereas residues G23-D223 represent the full length mature protein with truncated N-terminal signal peptide. Proteins were separated by SDS-PAGE and stained with Coomassie Brilliant Blue staining (CS) solution. All recombinant *E. coli*-expressed Tp0750 migrated as multiple bands via SDS-PAGE analysis. Protein identity was confirmed by western blot (WB) analysis using Tp0750-specific polyclonal antibodies. Analysis of each band by MALDI-TOF and LC-MS/MS confirmed all bands were derived from Tp0750 (data not shown). Insect-expressed Tp0750\_G<sup>23</sup>-D<sup>223</sup> migrated as a single band when analysed using SDS-PAGE (data not shown). Numbers to the left of the lanes indicate the size (kDa) of the corresponding molecular mass (MM) markers.