

FIG E1. Summary of MALDI-TOF mass spectrometry allelotyping. **A**, MALDI-TOF performed on genomic DNA for a heterozygote. **B**, MALDI-TOF performed on cDNA from the same individual. *i*, cDNA peak ratio identical to genomic DNA peak ratio, indicating no preferential allele expression. *ii*, Ratio of cDNA peaks differs from the genomic DNA, indicating preferential A allele expression. *iii*, Ratio of cDNA peaks differs from the genomic DNA, indicating preferential G allele expression.

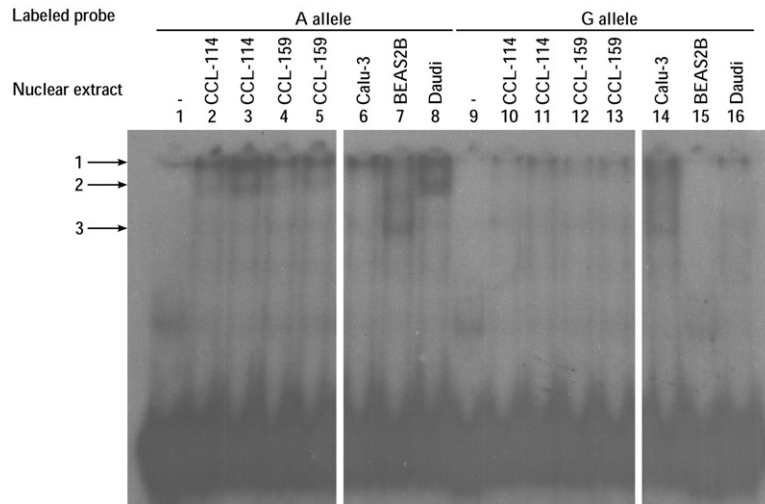


FIG E2. Protein-DNA interactions at *PHF11* involving rs1046295 using 5 cell lines. EMSAs corresponding to the A or G alleles of rs1046295 with CCL-114, CCL-159, Calu-3, BEAS-2B, and Daudi nuclear extracts. Multiple reactions with CCL-114 and CCL-159 nuclear extracts represent protein aliquots prepared on separate dates.