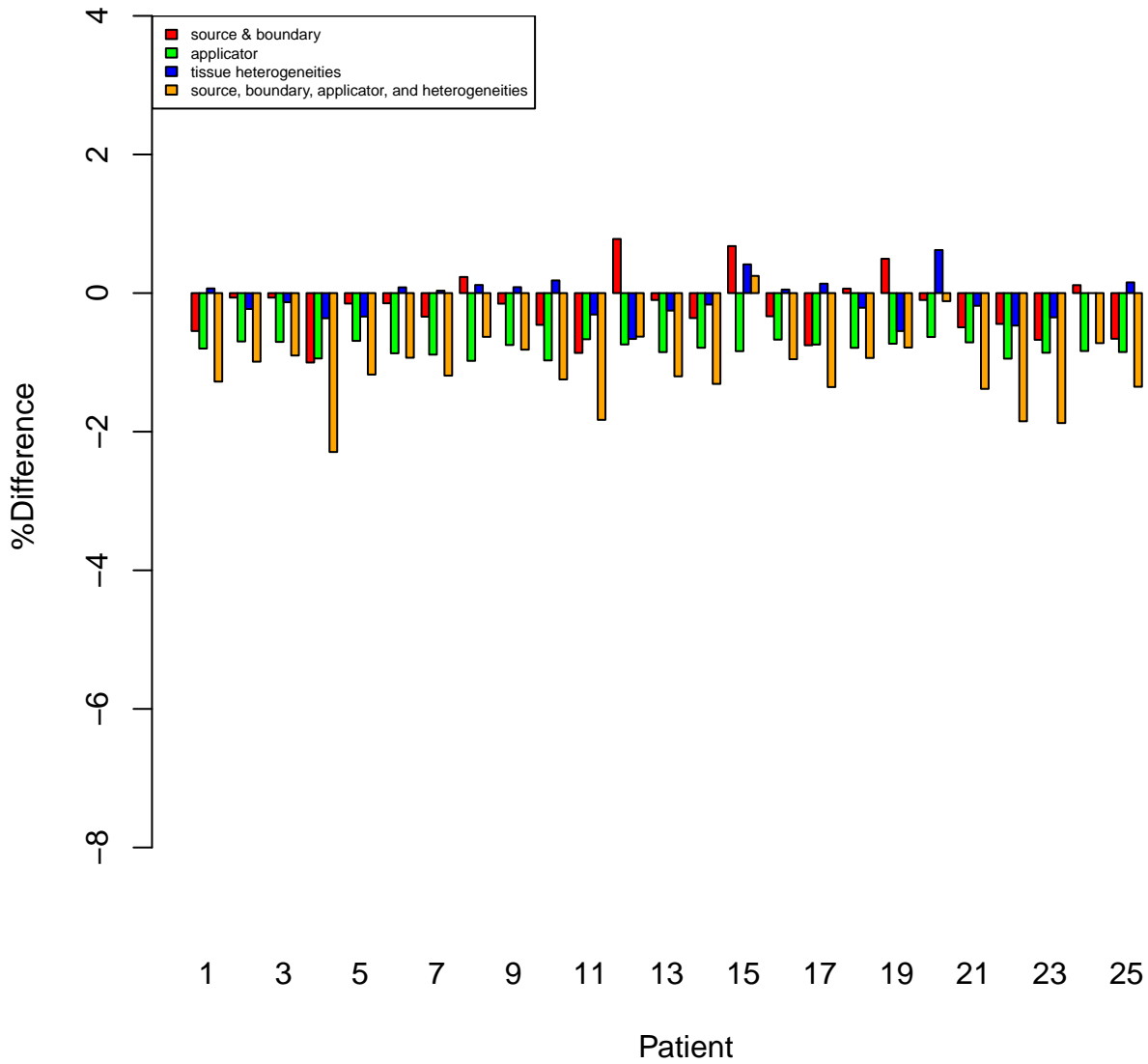
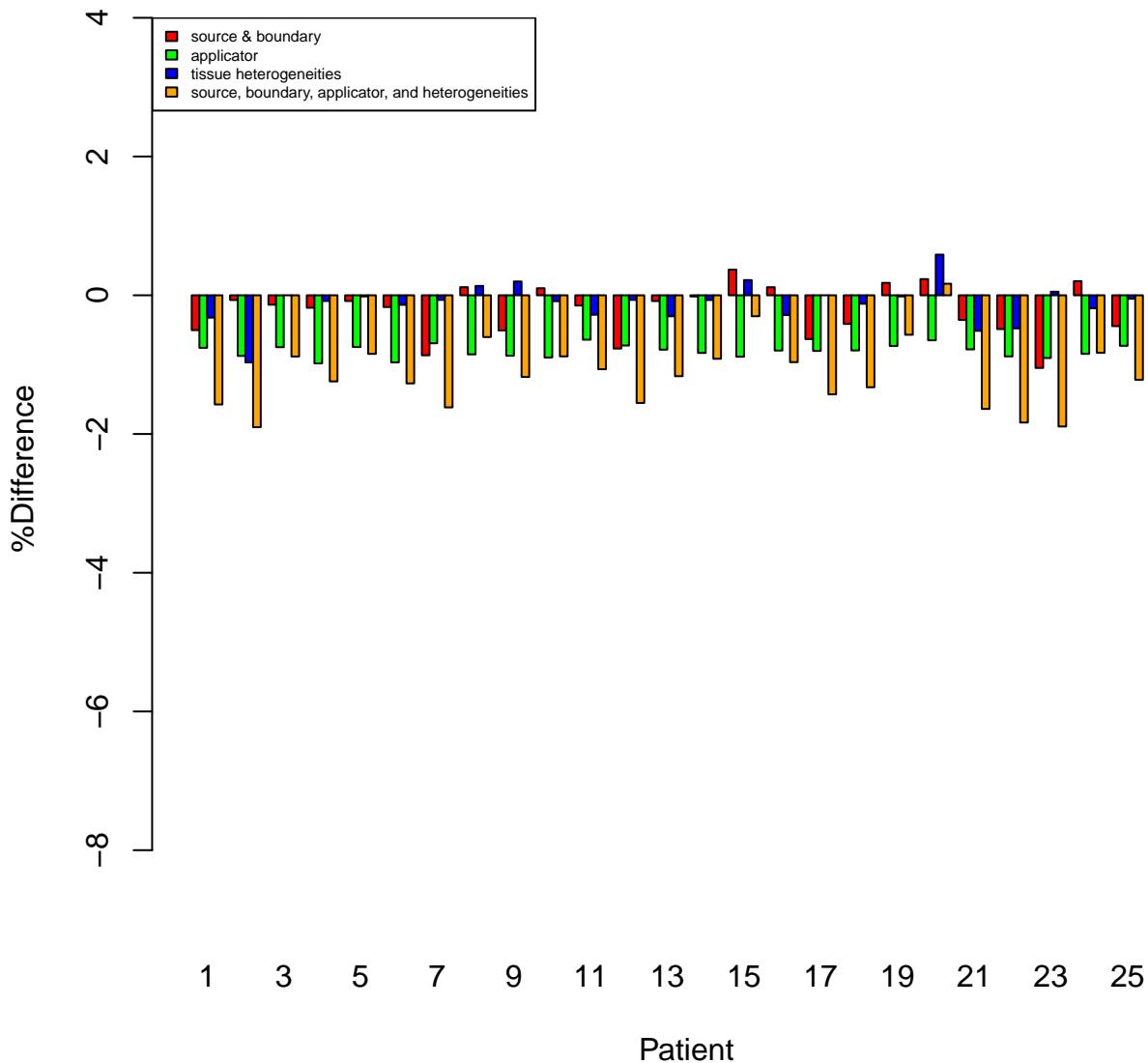


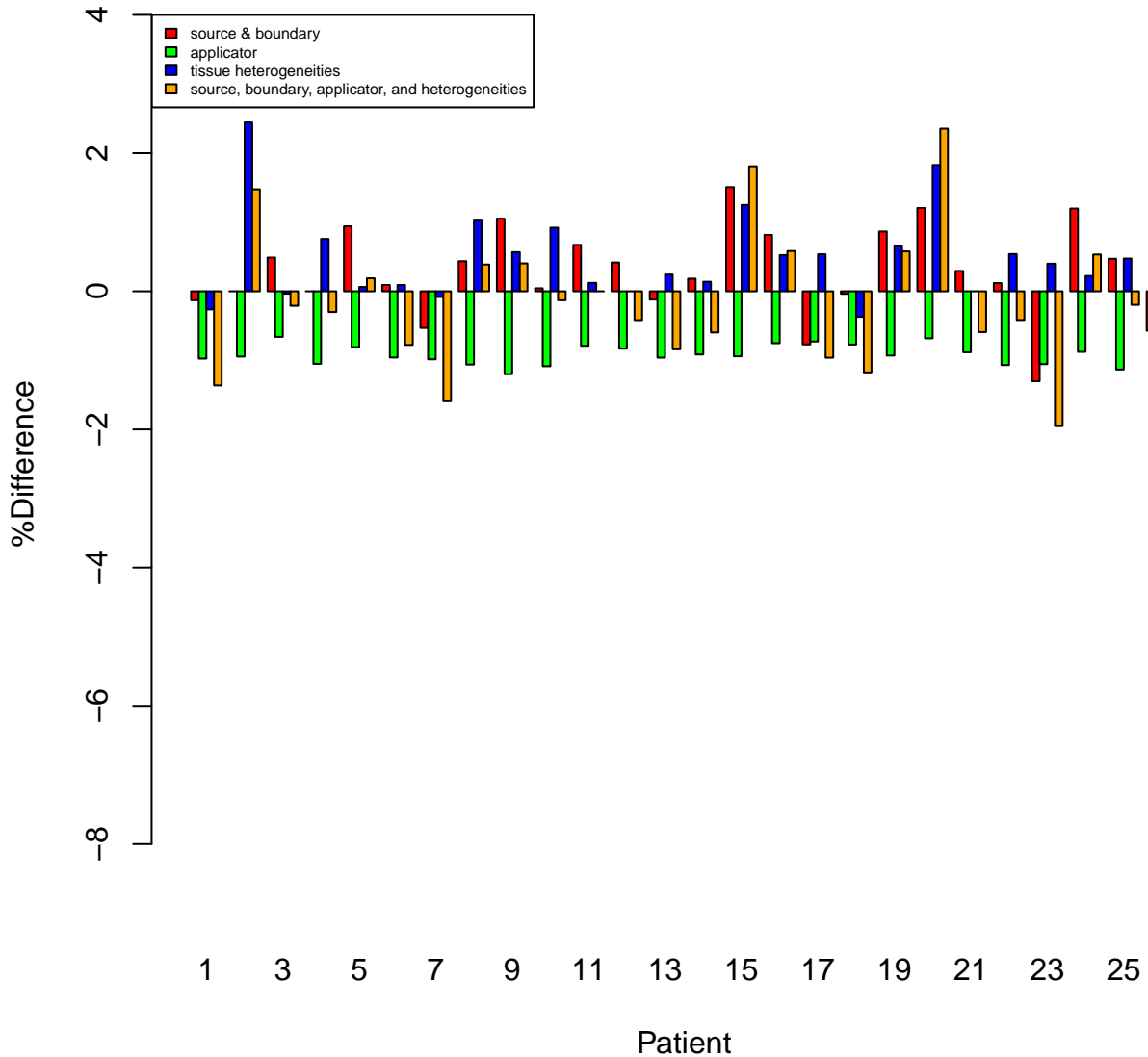
# Contribution of factors to differences between D(Y,N,N,N) and TG-43: A left



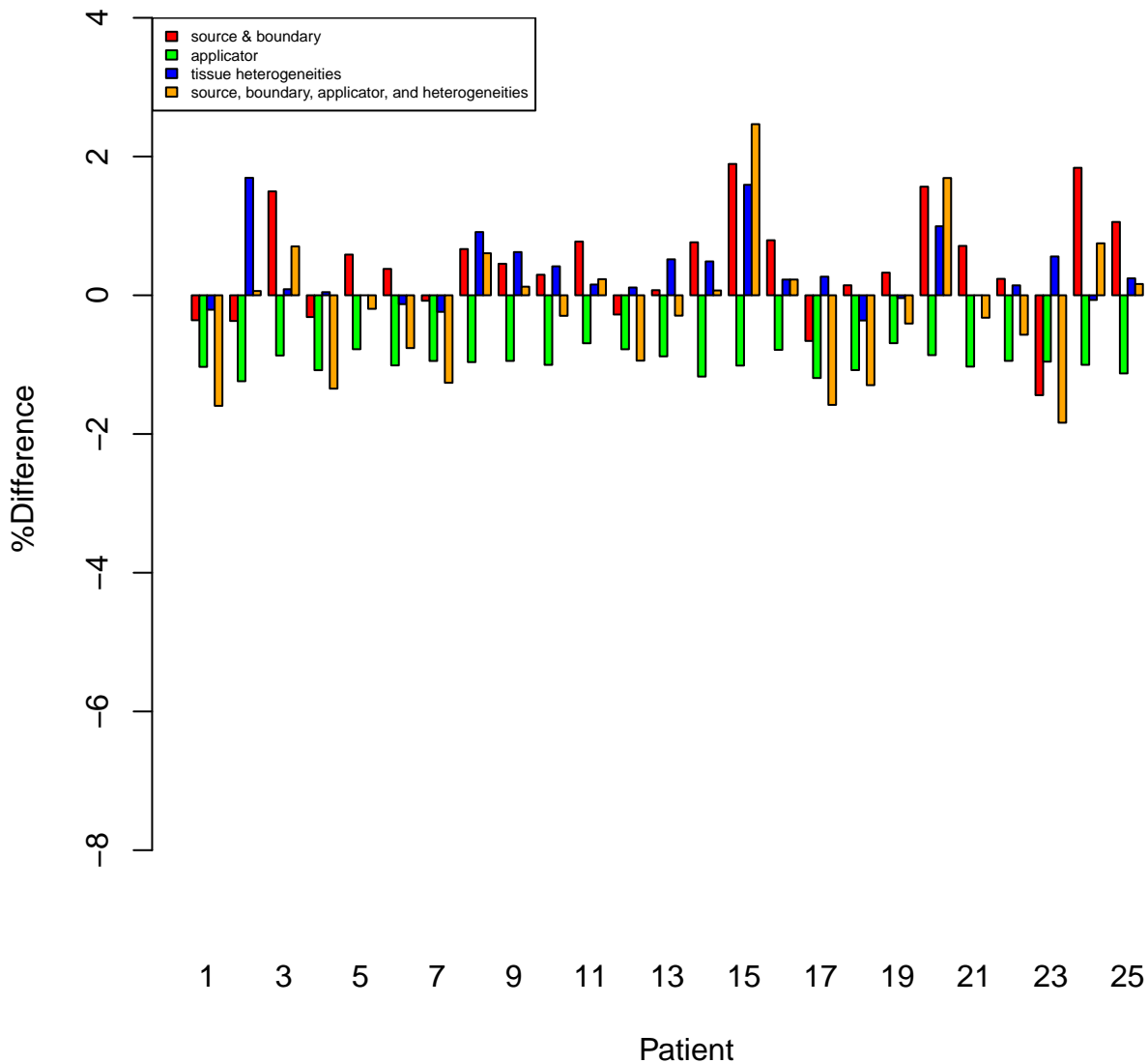
# Contribution of factors to differences between D(Y,N,N,N) and TG-43: A right



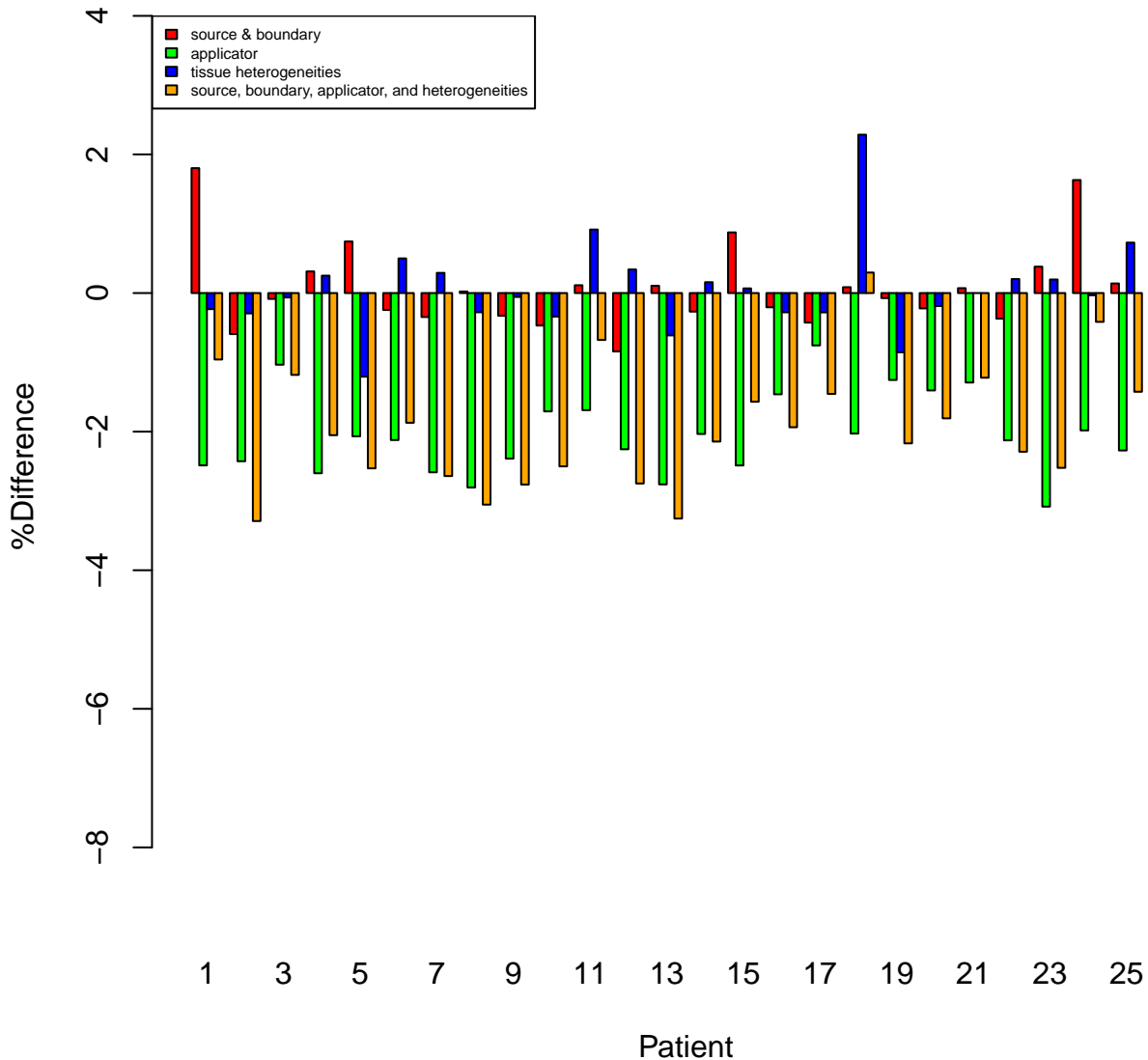
# Contribution of factors to differences between D(Y,N,N,N) and TG-43: B left



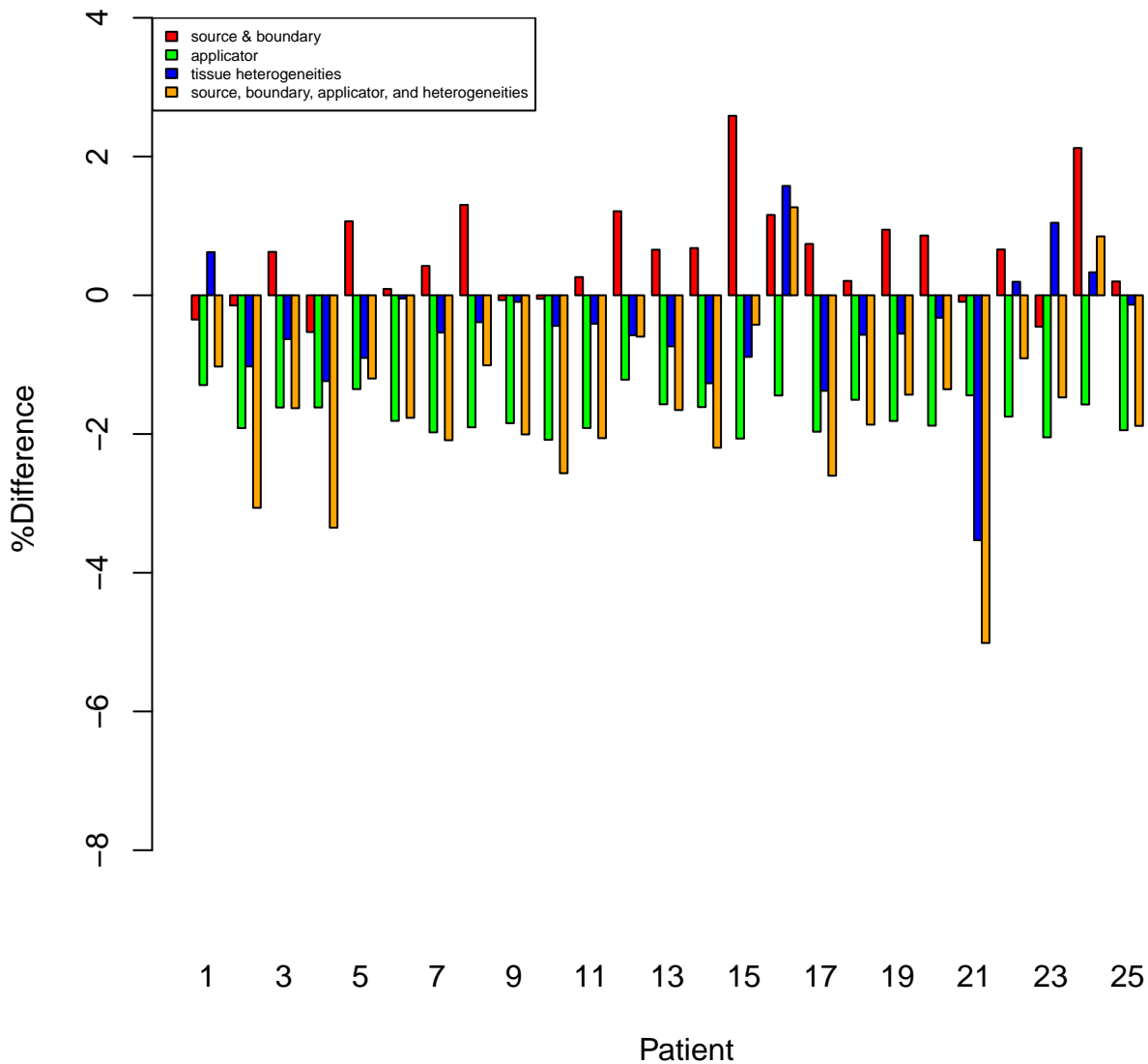
# Contribution of factors to differences between D(Y,N,N,N) and TG-43: B right



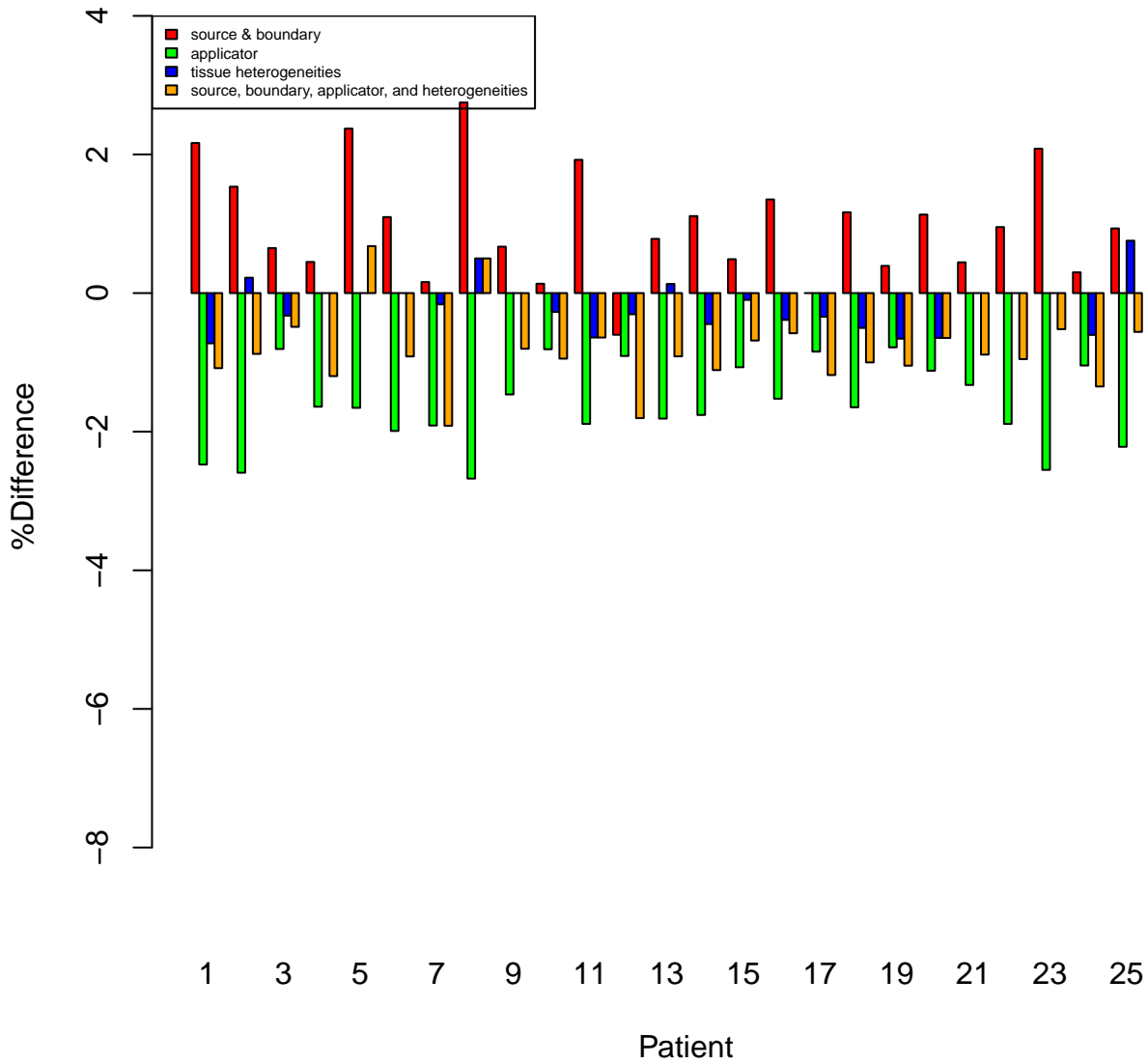
# Contribution of factors to differences between D(Y,N,N,N) and TG-43: ICRU bladder



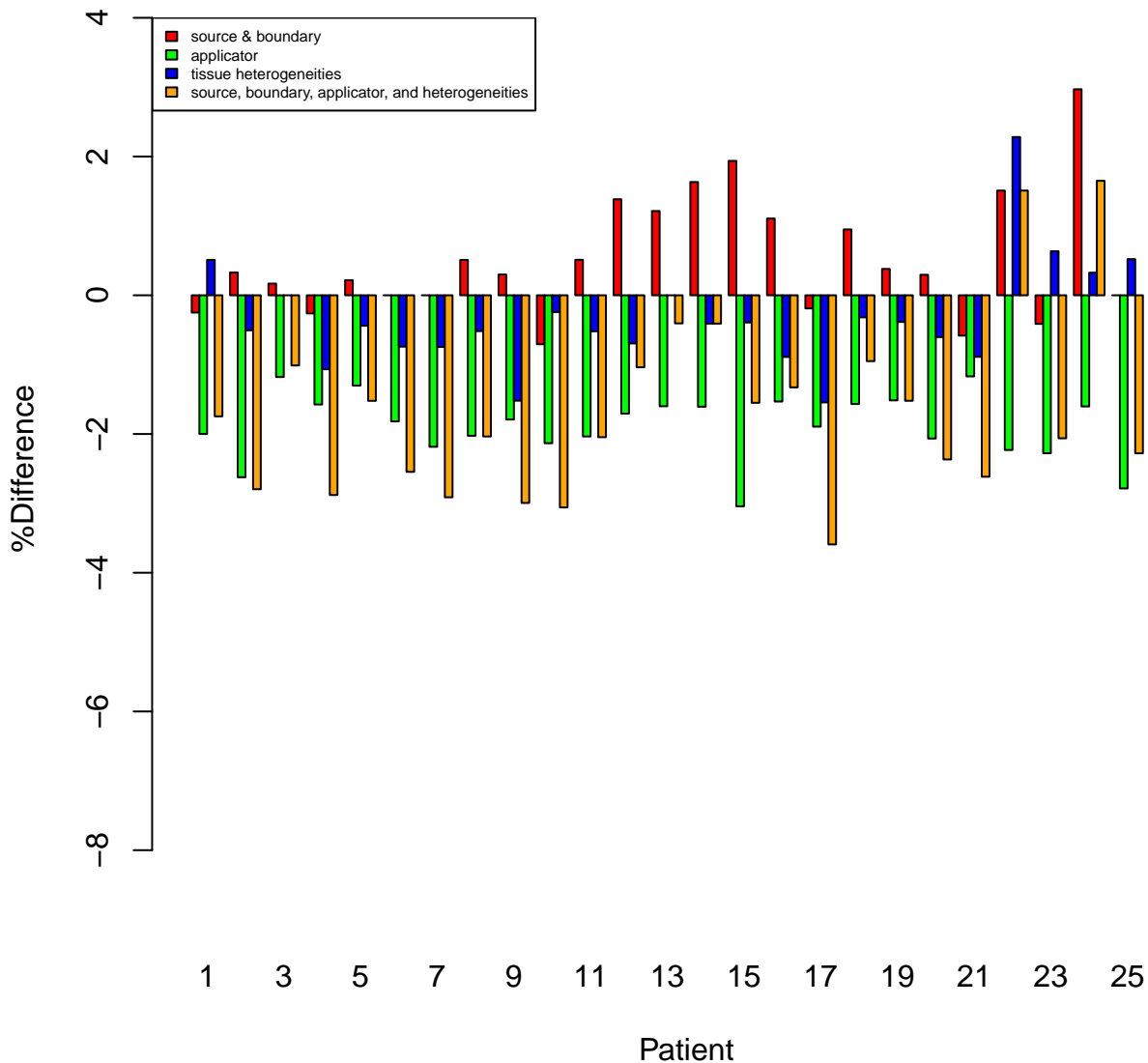
# Contribution of factors to differences between D(Y,N,N,N) and TG-43: ICRU rectum



# Contribution of factors to differences between D(Y,N,N,N) and TG-43: D2cc bladder

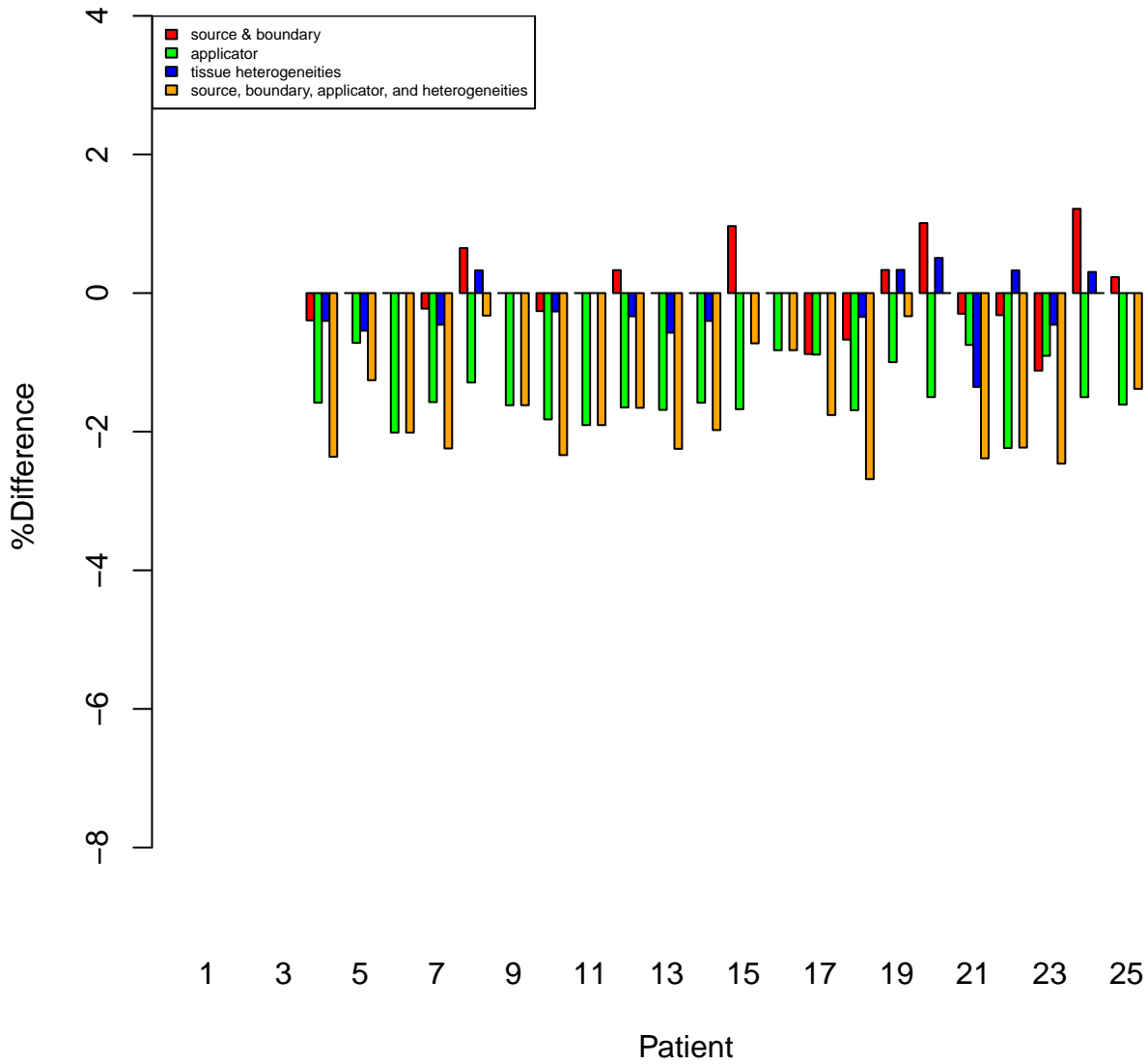


# Contribution of factors to differences between D(Y,N,N,N) and TG-43: D2cc rectum

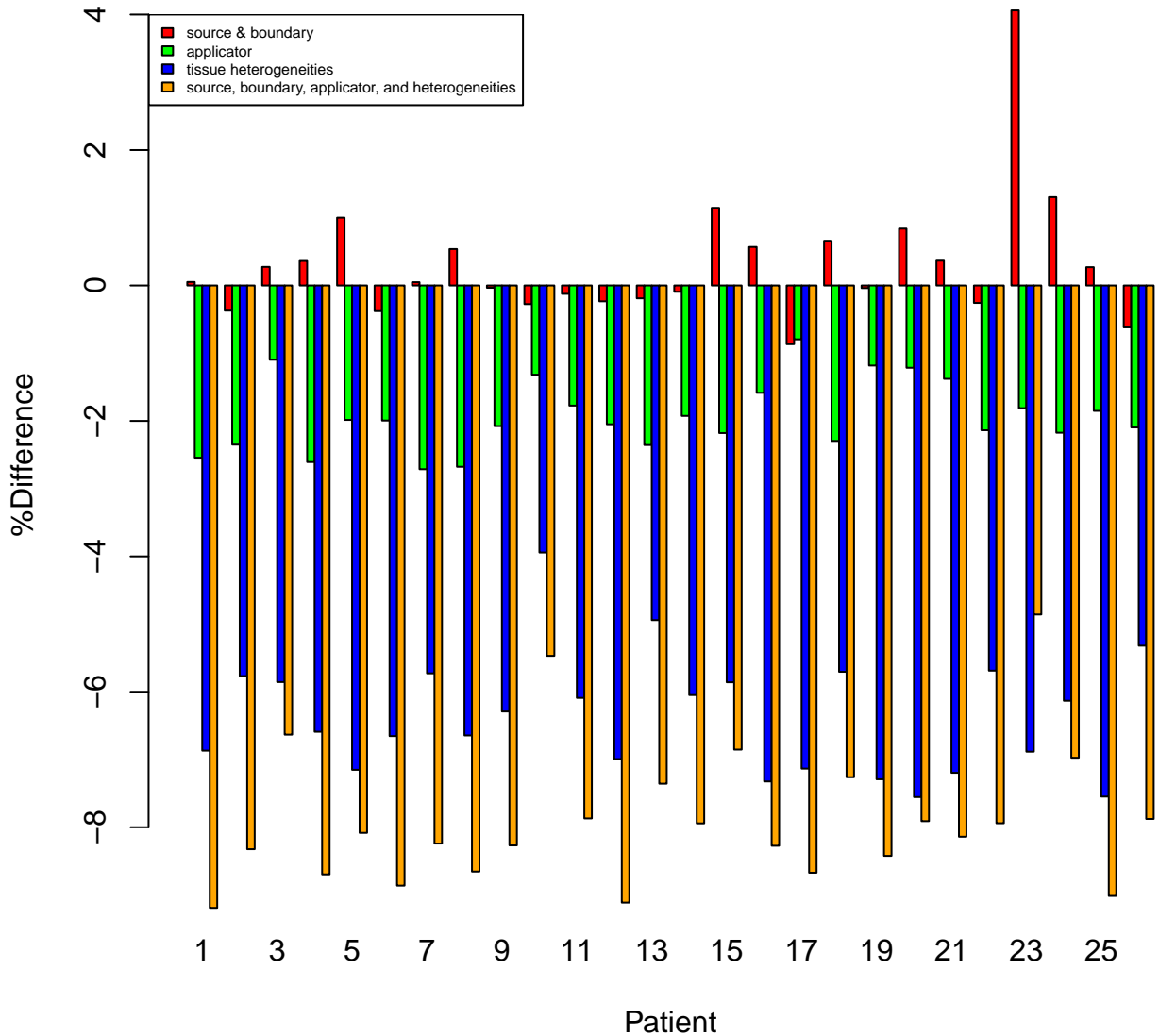




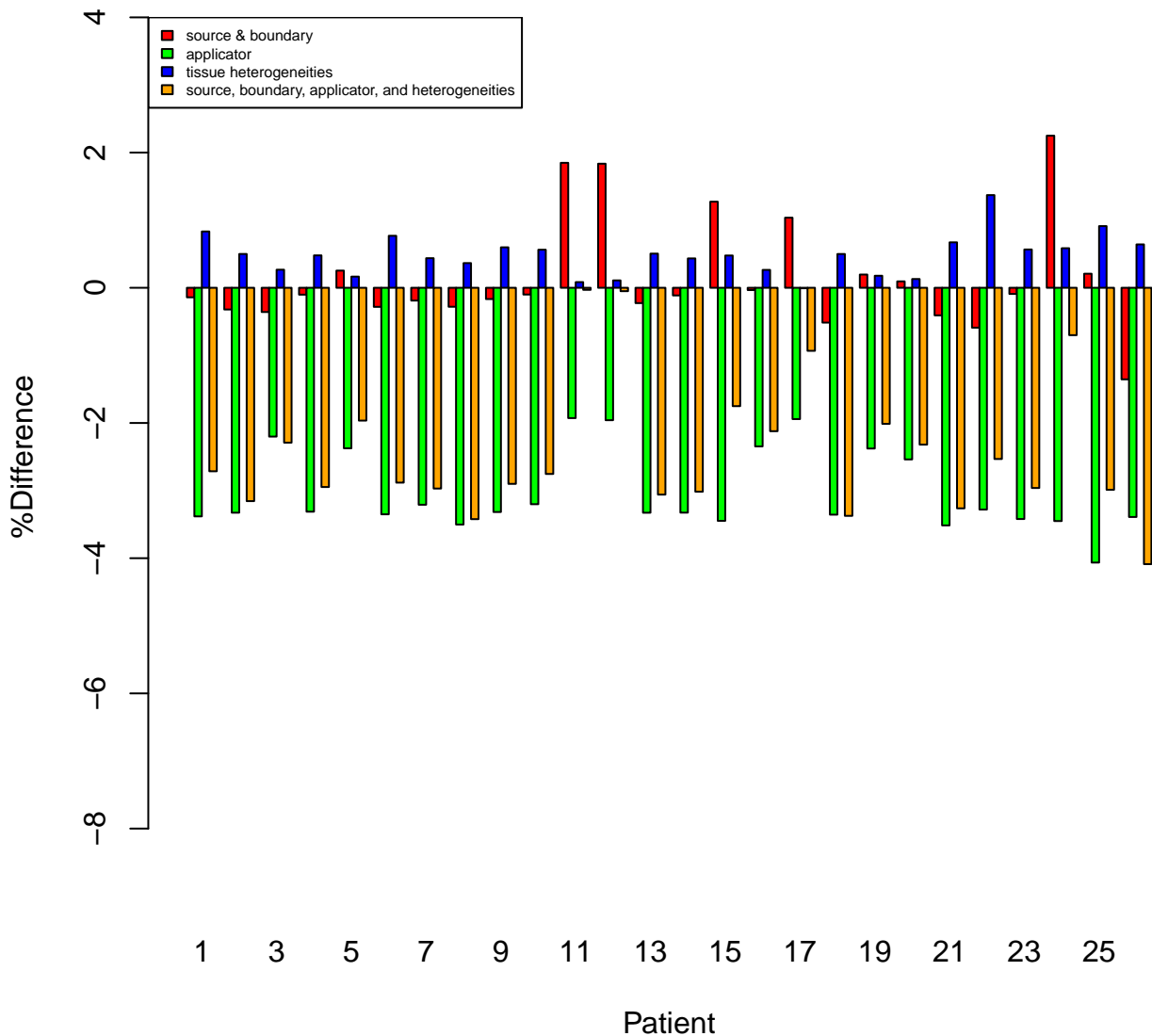
# Contribution of factors to differences between D(Y,N,N,N) and TG-43: D2cc sigmoid



# Contribution of factors to differences between D(Y,N,N,N) and TG-43: balloon center



# Contribution of factors to differences between D(Y,N,N,N) and TG-43: 3 oclock



# Contribution of factors to differences between D(Y,N,N,N) and TG-43: 9 o'clock

