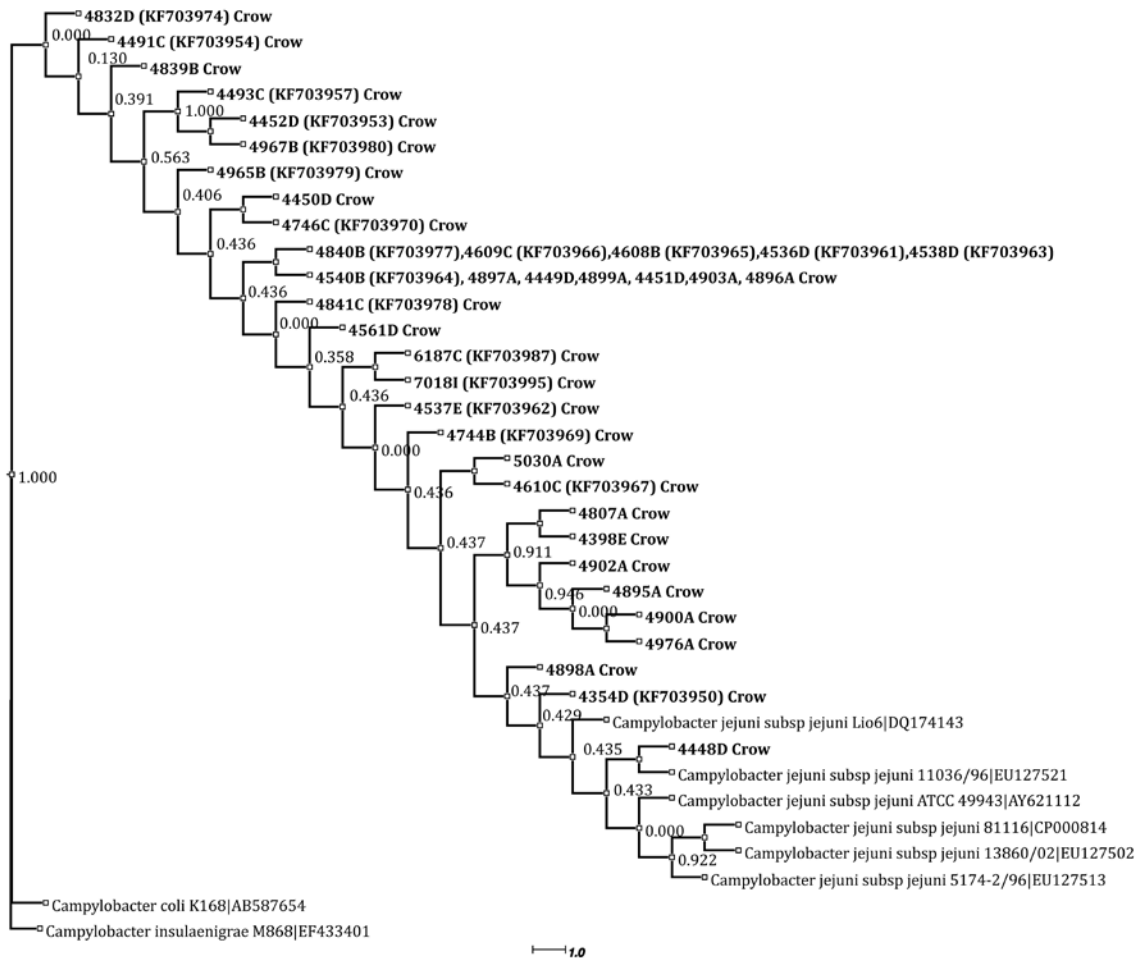


# SUPPLEMENT

**Supplemental Figure 1:** Phylogram of *Campylobacter* isolated from American crows that may form their own clade with close relative *C. jejuni* subsp. *jejuni* 81116. Lines beginning with 4840B and 4540B were all isolated from crows from this study along with the rest of the crow isolates, which are all shown in bold.

Distance is indicated by scale bar.



**Supplement Table 1:** *Campylobacter* isolate numbers and corresponding NCBI GenBank Accession

numbers

<b>Isolate</b>	<b>NCBI Accession number</b>
4354D	KF703950
4355B	KF703951
4393D	KF703952
4452D	KF703953
4491C	KF703954
4492E	KF703955
4493B	KF703956
4493C	KF703957
4494B	KF703958
4495C	KF703959
4535B	KF703960
4536D	KF703961
4537E	KF703962
4538D	KF703963
4540B	KF703964
4608B	KF703965
4609C	KF703966
4610C	KF703967
4743C	KF703968
4744B	KF703969
4746C	KF703970
4747B	KF703971
4749B	KF703972
4751B	KF703973
4832D	KF703974
4839B.1	KF703975
4839B.2	KF703976
4840B	KF703977
4965B	KF703979
4841C	KF703978
4967B	KF703980
5118C	KF703981
5120B	KF703982
5121B	KF703983
5335B	KF703984
5335C	KF703985
5758B	KF703986
6187C	KF703987
6825B	KF703988
6825H	KF703989
69948	KF703990
6994C	KF703991
7018A	KF703992
7018B	KF703993
7018C	KF703994
7018I	KF703995

6825G	KF703996
48-UCD	KF703997
49-UCD	KF703998
4450D	KF923691
4897A	KF923692
4896A	KF923693
4449D	KF923694
4899A	KF923695
4451D	KF923696
4903A	KF923697
4561D	KF923698
5030A	KF923699
4807A	KF923700
4398E	KF923701
4902A	KF923702
4895A	KF923703
4900A	KF923704
4976A	KF923705
4898A	KF923706
4448D	KF923707
4774A	KF923708
4562C	KF923709
4394D	KF923710
4527D	KF923711

**Supplement Table 2:** GenBank reference sequences used in phylogenetic analysis

<b>Campylobacter References</b>	<b>Accession Number</b>
<i>Campylobacter coli</i> K168	AB587654
<i>Campylobacter jejuni</i> subsp. <i>jejuni</i> strain Lio6	DQ174143
<i>Campylobacter jejuni</i> subsp. <i>jejuni</i> strain 11036/96	EU127521
<i>Campylobacter jejuni</i> subsp. <i>jejuni</i> strain 10626/04	EU127537
<i>Campylobacter jejuni</i> subsp. <i>jejuni</i> strain 11281/04	EU127548
<i>Campylobacter jejuni</i> subsp. <i>jejuni</i> strain ATCC 49943	AY621112
<i>Campylobacter jejuni</i> subsp. <i>jejuni</i> 81116	CP000814
<i>Campylobacter jejuni</i> subsp. <i>jejuni</i> M1	CP001900
<i>Campylobacter jejuni</i> subsp. <i>jejuni</i> ICDCJ07001	CP002029
<i>Campylobacter jejuni</i> subsp. <i>jejuni</i> 81-176	CP000538
<i>Campylobacter jejuni</i> strain ATCC 33250	JF747607
<i>Campylobacter jejuni</i> subsp. <i>jejuni</i> 81-176	CP000538
<i>Campylobacter jejuni</i> subsp. <i>jejuni</i> NCTC 11168	AL111168
<i>Campylobacter jejuni</i> strain 100	GQ167670
<i>Campylobacter jejuni</i>	M59298
<i>Campylobacter jejuni</i> strain DSM 4688	HM007568
<i>Campylobacter jejuni</i> strain WH11	AF393204
<i>Campylobacter jejuni</i>	CAJRRDAD/L04315
<i>Campylobacter jejuni</i> strain B99/224	AF550629
<i>Campylobacter jejuni</i> subsp. <i>jejuni</i> strain 1160-2/96	EU127522
<i>Campylobacter coli</i> strain NZ2695-96	DQ174137
<i>Campylobacter jejuni</i> strain 98/E600/5	AF393202
<i>Campylobacter coli</i> strain NZ900-95	DQ174139
<i>Campylobacter jejuni</i> subsp. <i>jejuni</i> strain CCUG 10937	DQ174141
<i>Campylobacter coli</i> strain Lio8	DQ174135
<i>Campylobacter coli</i> strain NZ4812-94	DQ174140
<i>Campylobacter jejuni</i> strain SWUN0701	GQ479811
<i>Campylobacter coli</i> strain NZ1905-94	DQ174136
<i>Campylobacter coli</i> strain K99	AB587650
<i>Campylobacter coli</i> strain 10-2	AB615420
<i>Campylobacter coli</i> strain LMG 15884	AF550622
<i>Campylobacter jejuni</i> strain SWUN0704	GQ479813
<i>Campylobacter coli</i> strain X7	GQ167671
<i>Campylobacter jejuni</i> subsp. <i>jejuni</i> PT14	CP003871
<i>Campylobacter jejuni</i> subsp. <i>jejuni</i> strain ATCC 29428	DQ174142
<i>Campylobacter jejuni</i> strain B99/206	AF550630
<i>Campylobacter jejuni</i> subsp. <i>jejuni</i> strain 15193/03	EU127542
<i>Campylobacter jejuni</i> strain INN-73-83 094400	GQ167679
<i>Campylobacter lari</i>	AB211985
<i>Campylobacter lari</i> strain NCTC12894	AB181359
<i>Campylobacter lari</i> subsp. <i>concheus</i> strain LMG 11760	AF550633
<i>Campylobacter lari</i> strain NZ3541-96	DQ174147
<i>Campylobacter lari</i> subsp. <i>concheus</i> strain Bird04-CA01	GU230875
<i>Campylobacter jejuni</i> RM1221	CP000025.1
<i>Campylobacter jejuni</i> strain RP0001	GQ167656
<i>Campylobacter jejuni</i> strain SWUN1202	GQ479819

<i>Campylobacter jejuni</i> strain TGH9011	TGH9011
<i>Campylobacter jejuni</i> subsp. <i>jejuni</i> S3	CP001960
<i>Campylobacter coli</i> strain K151	AB587653
<i>Campylobacter jejuni</i> RM1221	CP000025.2
<i>Campylobacter coli</i>	AF550620
<i>Campylobacter jejuni</i> subsp. <i>jejuni</i> IA3902	CP001876
<i>Campylobacter jejuni</i> subsp. <i>jejuni</i> strain 13860/02	EU127502
<i>Campylobacter jejuni</i> subsp. <i>jejuni</i> strain 5174-2/9	EU127513
<i>Campylobacter insulaenigrae</i> isolate M868	EF433401
<i>Campylobacter canadensis</i> strain L267	EF621896
<i>Helicobacter nemestrinae</i>	AF348617
<i>Arcobacter cryaerophilus</i> strain W2-1	JX392996
<i>Arcobacter cryaerophilus</i> strain NW94	JF915357
<i>Campylobacter lanienae</i>	AY288304
<i>Campylobacter hyointestinalis</i> subsp. <i>hyointestinalis</i> strain SVS3038	AF097691
<i>Campylobacter hyointestinalis</i> subsp. <i>hyointestinalis</i>	AB301962
<i>Campylobacter troglodytis</i> strain MIT 05-9156	EU559330
<i>Campylobacter helveticus</i> strain NCTC 12472	DQ174163
<i>Campylobacter jejuni</i> subsp. <i>jejuni</i> strain ATCC 49943	AY621112
<i>Campylobacter cuniculorum</i> strain 120/07	EU636820
<i>Campylobacter ureolyticus</i> strain UNSWM	GQ167669
<i>Campylobacter hyointestinalis</i> subsp. <i>hyointestinalis</i> strain 0943	AF097682
<i>Campylobacter fetus</i> MGH 97-2126	AF219233
<i>Campylobacter concisus</i> strain ATCC 51561	GQ167663
<i>Campylobacter sputorum</i> strain 0403110-C0102	HQ628644
<i>Campylobacter hominis</i> isolate 2	EU781615
<i>Campylobacter rectus</i> strain PW1484	HQ890329
<i>Campylobacter curvus</i> strain LMG 11034	AF550650
<i>Campylobacter showae</i> strain ATCC 51146	JF747611
<i>Campylobacter mucosalis</i>	L06978
<i>Campylobacter jejuni</i> strain UNSW091300	GQ167677
<i>Campylobacter jejuni</i> strain SWUN1206	GQ479822
<i>Campylobacter jejuni</i> subsp. <i>jejuni</i> strain 9582/04	EU127536
<i>Campylobacter coli</i>	L19738
<i>Campylobacter coli</i> strain H99/155	AF550624
<i>Campylobacter coli</i> strain LMG 15883	AF550621
<i>Campylobacter coli</i> strain BABS091500	GQ167678
<i>Campylobacter lari</i> strain LMG 7607	AF550631
<i>Campylobacter lari</i> strain NZ145-95	DQ174146
<i>Campylobacter lari</i> subsp. <i>lari</i> strain LMG 14338	AF550634
<i>Campylobacter lari</i> subsp. <i>lari</i> strain CCUG 23947	L04316
<i>Campylobacter volucris</i> LMG 24379	FM883693
<i>Campylobacter peloridis</i> strain LMG 11251	AF550632
<i>Campylobacter jejuni</i> subsp. <i>jejuni</i> strain Lio6	DQ174143