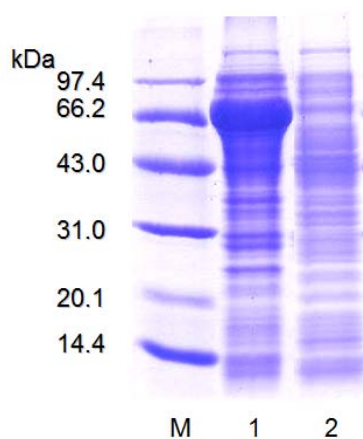


**TABLE S1**

The quantitative results of activity of crude lysate of *E. coli*<sup>a</sup>.

<i>E. coli</i> BL21	Total activity (U)	Protein (mg)	Specific activity (U/mg)
Empty vector control	78.1	8	8.8
Vector harboring <i>RmAsnase</i>	43,506.4	35.8	779.7

<sup>a</sup>Enzymatic reactions were carried out for 10 min at 45 °C in 50 mM phosphate buffer (pH 7.0) as described in the text.

**FIG S1**

SDS-PAGE analysis of crude proteins expressed in *E. coli*. Lane M, low molecular weight protein markers; lane 1, crude lysate of *E. coli* harboring *RmAsnase* in pET-28a (+) vector; lane 2, crude lysate of *E. coli* with an empty pET-28a (+) vector.