

Table S1: TsZM-bl assay pseudovirus neutralization by plasma from all adjuvant groups.

adjuvant group / animal number	time point	B clade			C clade		CRF01_AE
		tier 1		tier 2	tier 2		tier 2
		BaL.26	Bx08.16	PVO.4	DU123.6	DU172.17	93TH976.1
group 1 (STS)							
4828	w0	<20*	<20	<20	<20	<20	<20
	w23	55	65	<20	21	26	26
	w32	26	45	<20	25	26	23
4829	w0	<20	<20	<20	<20	<20	<20
	w23	47	60	<20	<20	<20	<20
	w32	36	50	<20	<20	<20	<20
4844	w0	<20	<20	<20	<20	<20	<20
	w23	32	53	<20	<20	<20	<20
	w32	38	66	<20	23	30	<20
group 2 (STS+LA)							
4830	w0	<20	22	<20	<20	<20	<20
	w23	72	98	<20	<20	<20	<20
	w32	56	100	<20	23	21	<20
4831	w0	<20	<20	<20	<20	<20	<20
	w23	64	81	<20	<20	21	22
	w32	60	79	<20	26	23	23
4845	w0	<20	25	<20	<20	21	<20
	w23	69	104	<20	24	36	22
	w32	37	72	<20	<20	<20	<20
group 3 (STS+LA+oCpG)							
4838	w0	<20	<20	<20	<20	23	<20
	w23	99	103	<20	27	36	28
	w32	71	96	<20	25	35	<20
4839	w0	<20	<20	<20	20	<20	22
	w23	170	141	<20	<20	<20	<20
	w32	170	133	<20	20	<20	<20
4840	w0	<20	<20	<20	<20	<20	<20
	w23	97	96	<20	<20	<20	<20
	w32	83	89	<20	<20	24	<20
group 4 (STS+LA+R848)							
4836	w0	20	25	<20	<20	<20	<20
	w23	163	129	<20	<20	<20	<20
	w32	89	98	<20	34	30	22
4837	w0	<20	36	<20	<20	<20	<20
	w23	138	198	<20	<20	<20	<20
	w32	67	140	<20	<20	23	<20
4848	w0	<20	<20	<20	<20	<20	<20
	w23	49	46	<20	<20	<20	<20
	w32	40	44	<20	<20	<20	<20
group 5 (STS+oCpG)							
4834	w0	<20	22	<20	<20	<20	<20
	w23	139	135	<20	<20	25	<20
	w32	74	96	<20	23	22	21
4835	w0	<20	22	<20	<20	<20	<20
	w23	93	86	<20	<20	<20	<20
	w32	61	67	<20	<20	<20	<20
4847	w0	<20	23	<20	<20	<20	<20
	w23	58	242	<20	<20	<20	<20
	w32	50	119	<20	26	21	<20
group 6 (STS+R848)							
4832	w0	<20	25	<20	<20	<20	<20
	w23	201	272	<20	21	<20	26
	w32	100	170	<20	21	<20	25
4833	w0	<20	<20	<20	<20	<20	<20
	w23	143	118	<20	<20	23	<20
	w32	69	91	<20	22	<20	<20
4846	w0	<20	23	<20	<20	<20	<20
	w23	107	161	<20	32	<20	<20
	w32	129	142	<20	24	22	<20
group 7 (STS+oCpG+R848)							
4841	w0	<20	<20	<20	<20	21	<20
	w23	827	380	<20	26	26	31
	w32	716	276	<20	48	30	23
4842	w0	<20	<20	<20	24	<20	<20
	w23	173	114	<20	27	27	24
	w32	134	181	<20	34	22	<20
4843	w0	<20	<20	<20	<20	<20	<20
	w23	121	155	<20	<20	<20	22
	w32	128	145	<20	26	<20	<20

* Plasma dilution resulting in 50% reduction of infection.

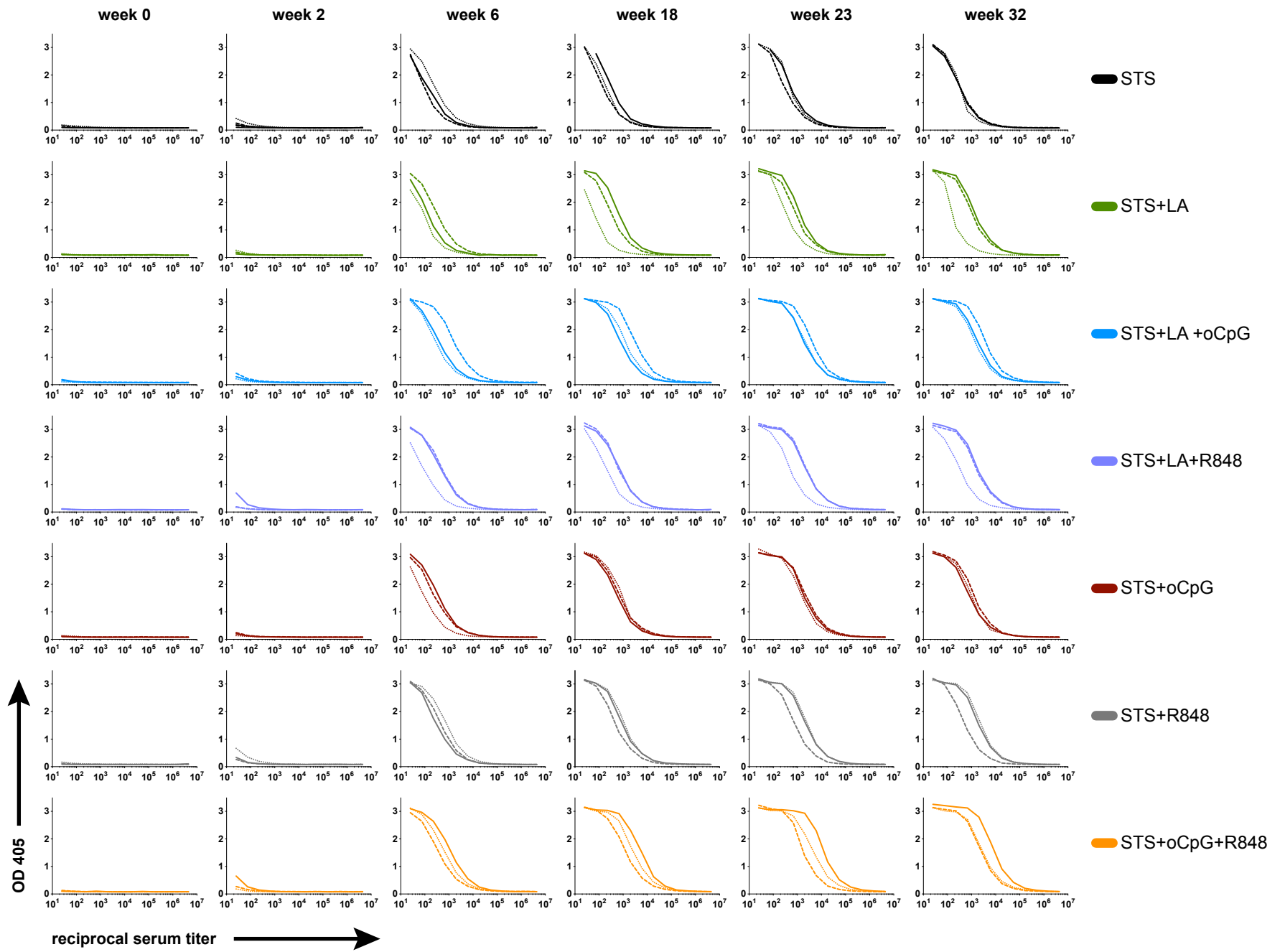


Figure S1

Supplemental Figure S1. ELISA binding data for antibodies elicited by gp140 B.63521 in oil-in-water emulsions.

ELISA data underlying the endpoint titer results shown in Fig. 2 are plotted. Adjuvant mixtures are constant across each row, each column represents an assayed time point. In each row, solid lines, dashed lines, and dotted lines represent individual animals.

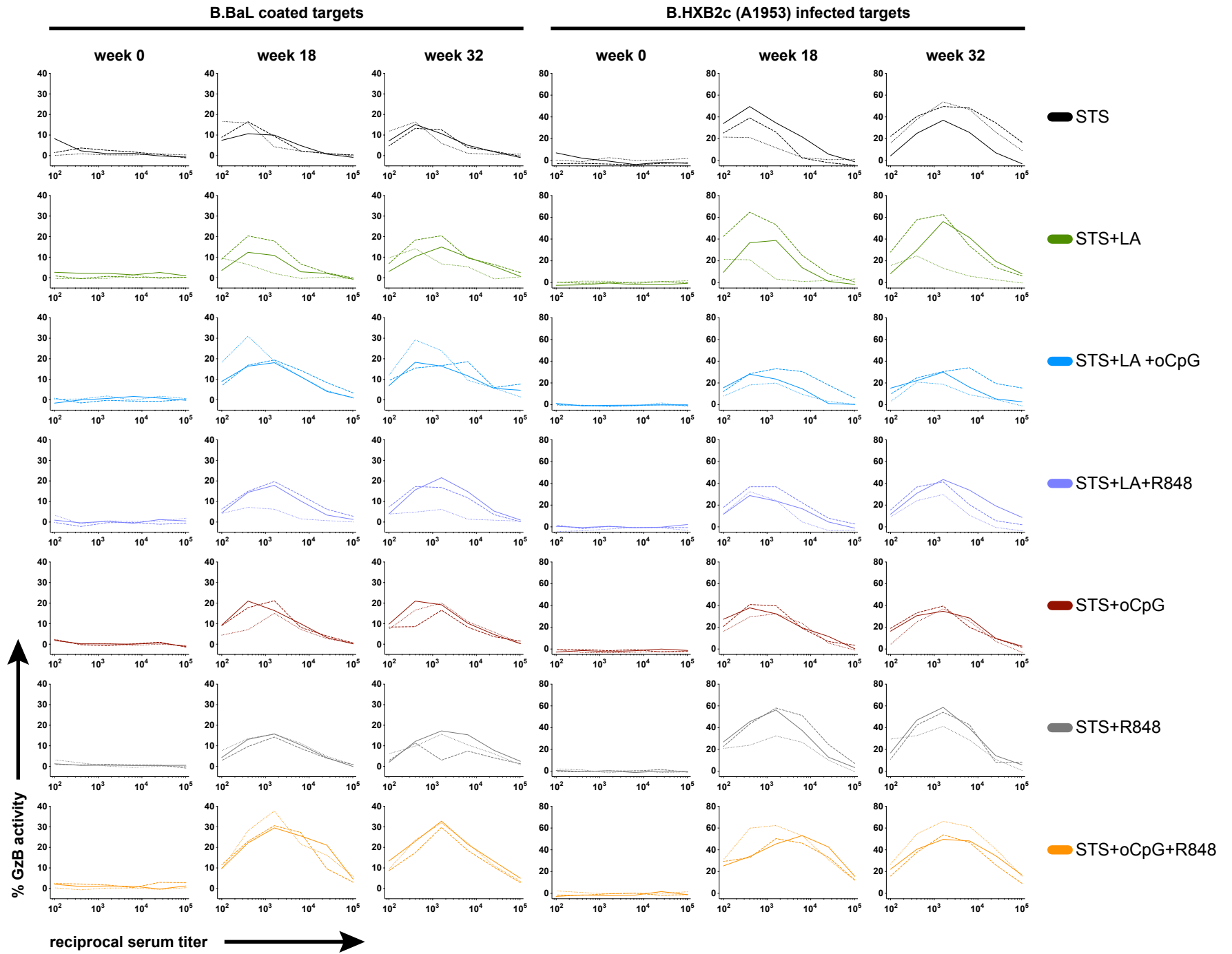


Figure S2

Supplemental Figure S2. ADCC data for antibodies elicited by gp140 B.63521 in oil-in-water emulsions.

ADCC data underlying the results shown in Fig. 6 are plotted. Adjuvant mixtures are constant across each row, each column represents an assayed time point. In each row, solid lines, dashed lines, and dotted lines represent individual animals. Data on the left in the first three columns are for B.BaL-coated target cells and underly the data shown in Fig. 6. Data on the right in the final three columns are for chronically infected target cells (A1953).