

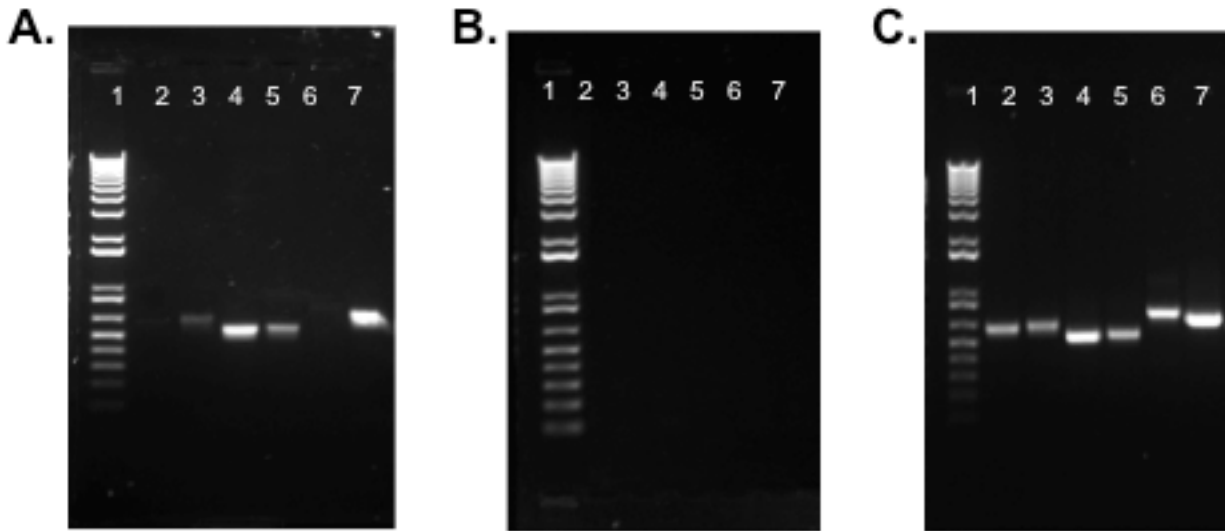
Bsab, a novel adherence factor of group B *Streptococcus*  
S. Jiang and M.R. Wessels

Supplemental Material

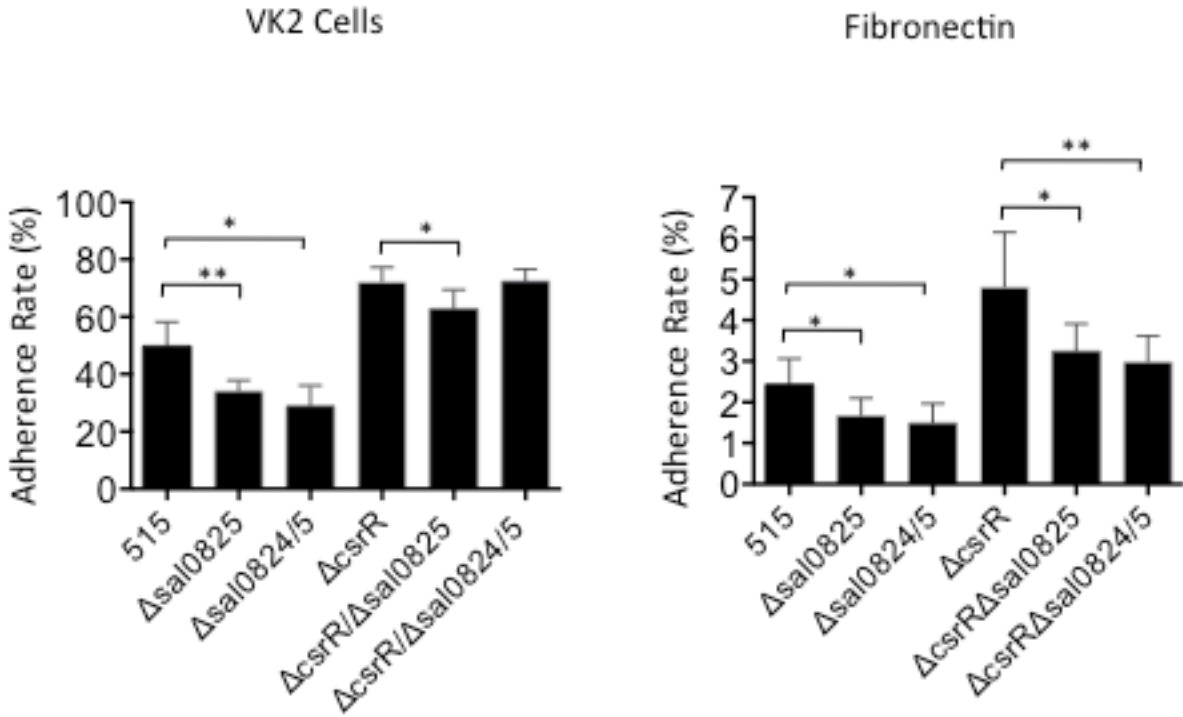
Figure S1. RT-PCR assay for the transcriptional linkage of *sal0824/0825* and flanking genes.

Figure S2. Effect of inactivation of *sal0825* or *sal0824/0825* locus on GBS adherence to VK2 cells and immobilized fibronectin.

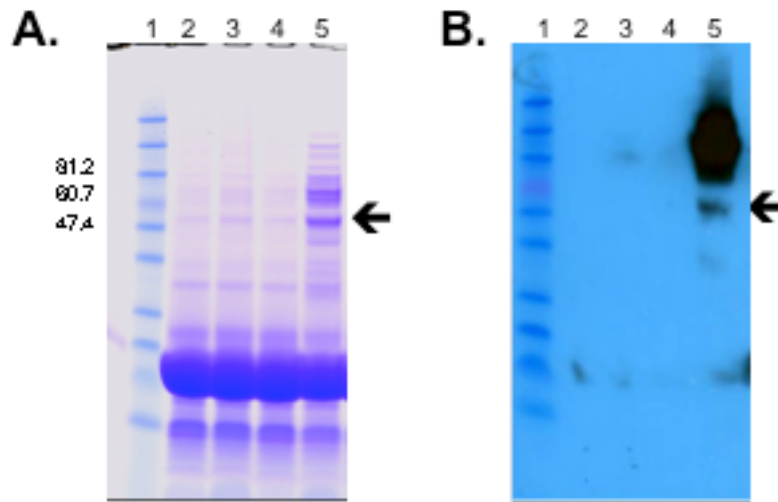
Figure S3. Expression of Sal0825 in *L. lactis*.



**Figure S1. RT-PCR assay for the transcriptional linkage of *sal0824/0825* and flanking genes.** (A) RT-PCR reaction with RNA from mid-exponential phase cultures of strain 515. (B) RT-PCR control reaction to exclude DNA contamination of RNA with the same set-up as that in panel A but without including reverse transcriptase. (C) PCR control reaction to test of the efficiency of primer pairs with 515 chromosomal DNA as template. Specific primer pairs were from following adjacent genes: *sal0823/0824* (lane 2), *sal0824/0825* (lane 3), *sal0825/0826*, (lane 4), *sal0826/0827* (lane 5), *sal0827/0828* (lane 6), and *sal0828-0829* (lane 7). Molecular weight standards (lane 1).



**Figure S2. Effect of inactivation of *sal0825* or *sal0824/0825* locus on GBS adherence to VK2 cells and immobilized fibronectin.** Relative adherence was compared among GBS strains 515, 515 $\Delta sal0825$  ( $\Delta sal0825$ ), 515 $\Delta sal0824/5$  ( $\Delta sal0824/5$ ), 515 $\Delta csrR$  ( $\Delta csrR$ ), 515 $\Delta csrR/\Delta sal0825$  ( $\Delta csrR/\Delta sal0825$ ), 515 $\Delta csrR/\Delta sal0824/5$  ( $\Delta csrR/\Delta sal0824/5$ ). Adherence is shown as percent of the initial inoculum (mean  $\pm$  SD). Each assay was performed at least three times in triplicate. \*,  $P < 0.05$ ; \*\*,  $P < 0.01$ .



**Figure S3. Expression of Sal0825 in *L. lactis*.** (A) Proteins anchored to bacterial cell wall were isolated and then separated by SDS-PAGE. Lane 1: Molecular weight standards. Lanes 2 and 3: Proteins isolated from *L. lactis* strain containing vector alone (pNZ) either in the absence of nisin induction (lane 2) or in presence of nisin induction (lane 3). Lane 4 and 5: Proteins isolated from *L. lactis* pNZ-Sal0825 (pNZ-Sal0825) either in absence of nisin induction (lane 4) or in the presence of nisin induction (lane 5). The arrow points to the predicted protein Sal0825 in monomeric form. The ladder-like bands above may represent polymers of Sal0825. (B) Western blot analysis with specific antiserum against VSV-G. Lanes are labeled as in Panel A.