

Figure S1

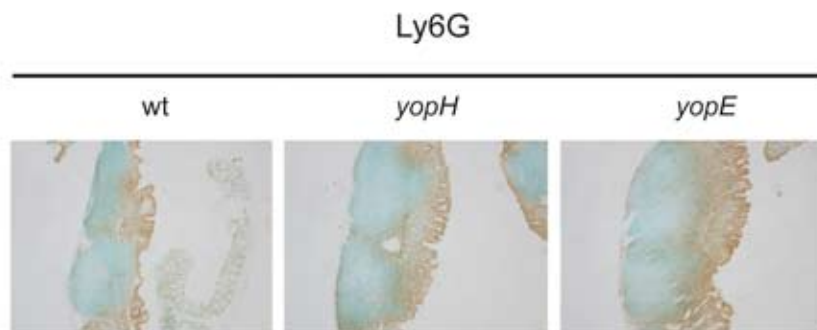


Fig. S1 Infection with wt, *yopH*, and *yopE* mutants induces recruitment of comparable levels of PMNs at day one p.i..

BALB/c mice were infected with bioluminescent *Y. pseudotuberculosis* wt, *yopH* and *yopE* mutants. One day post infection, cecums positive for bacterial signal in IVIS were collected, cryosectioned and analyzed for the presence of PMNs by immunohistochemistry with α -Ly6G. Images of representative stainings at 4x magnification are shown.

Figure S2

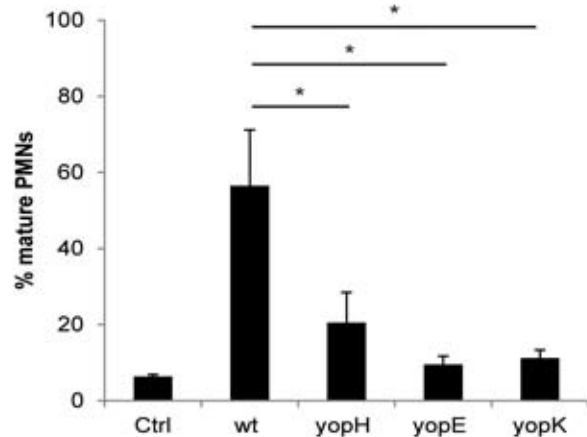


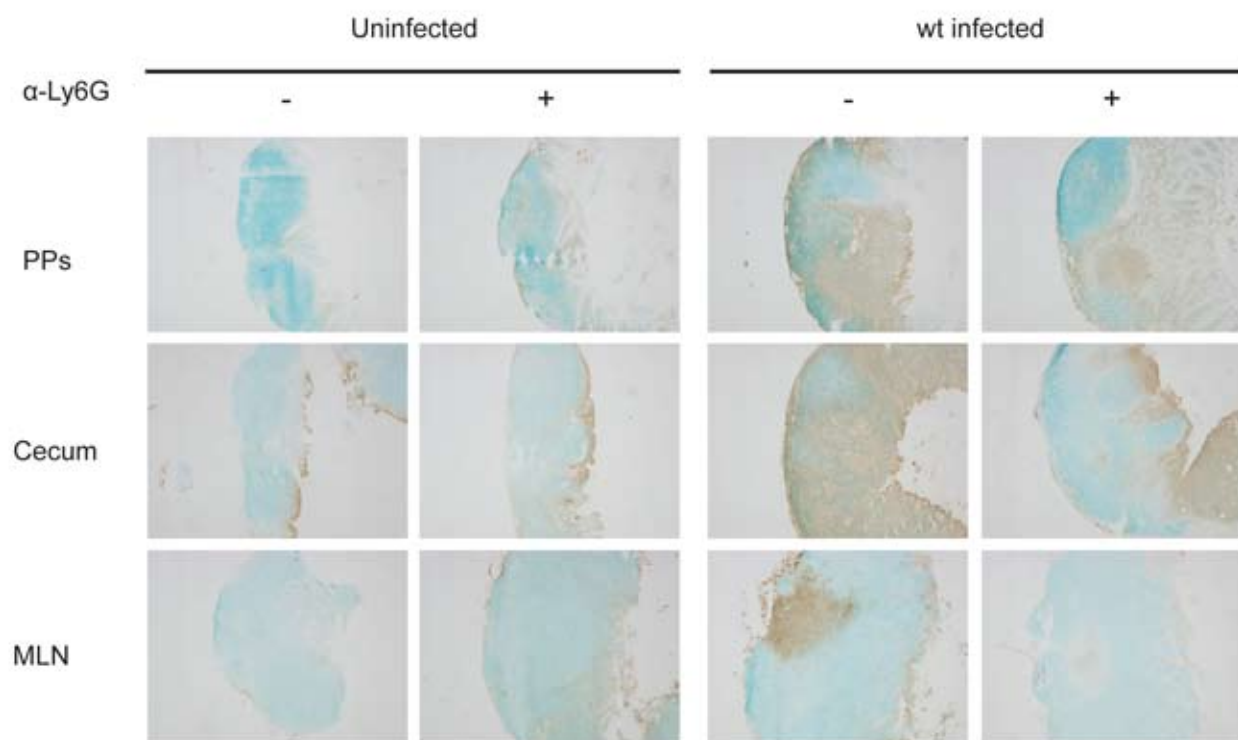
Fig. S2. Infection with wt *Y. pseudotuberculosis* induces a higher PMN increase in blood than infection with *yopH*, *yopE* and *yopK* mutants.

BALB/c mice were infected with bioluminescent *Y. pseudotuberculosis* wt, *yopH*, *yopE*, and *yopK*. Blood was collected and cellular expression of Gr-1 and MHCII was determined by flow cytometry analysis. Data for gated mature Gr-1^{high}MHCII⁻ PMNs are presented as mean \pm SD. Differences between groups were analyzed by unpaired Students t-test with significance set at $P < 0.05^*$, $P < 0.01^{**}$ or $P < 0.001^{***}$.

Figure S3

A

Ly6G



B

F4/80

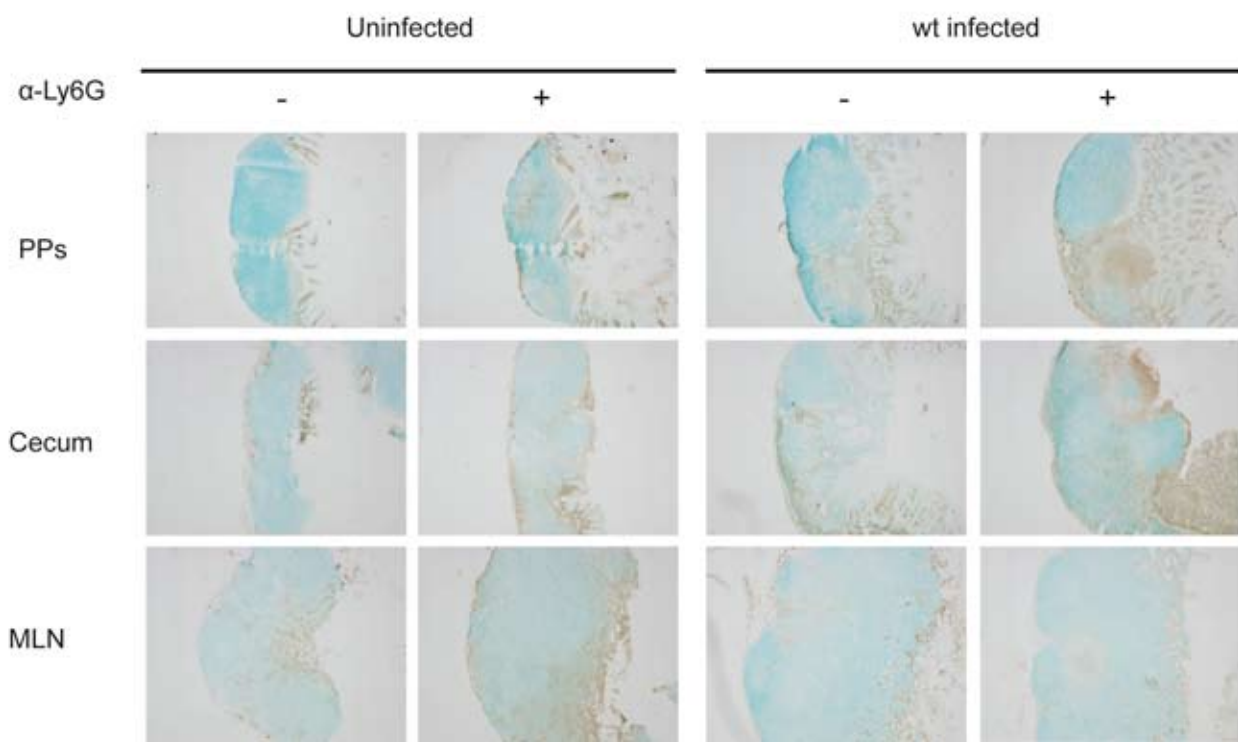


Fig. S3. PMNs and macrophages increase in PPs and cecum, but not MLN of PMN-depleted mice upon infection.

At day three p.i. PPs, cecums and MLNs from undepleted and PMN-depleted BALB/c mice, uninfected or infected with wt *Y. pseudotuberculosis* were collected and analyzed for the presence of PMNs and macrophages by immunohistochemistry with **A)** α -Ly6G and **B)** α -F4/80. Pictures of representative stainings at 4x magnification are shown.

Figure S4

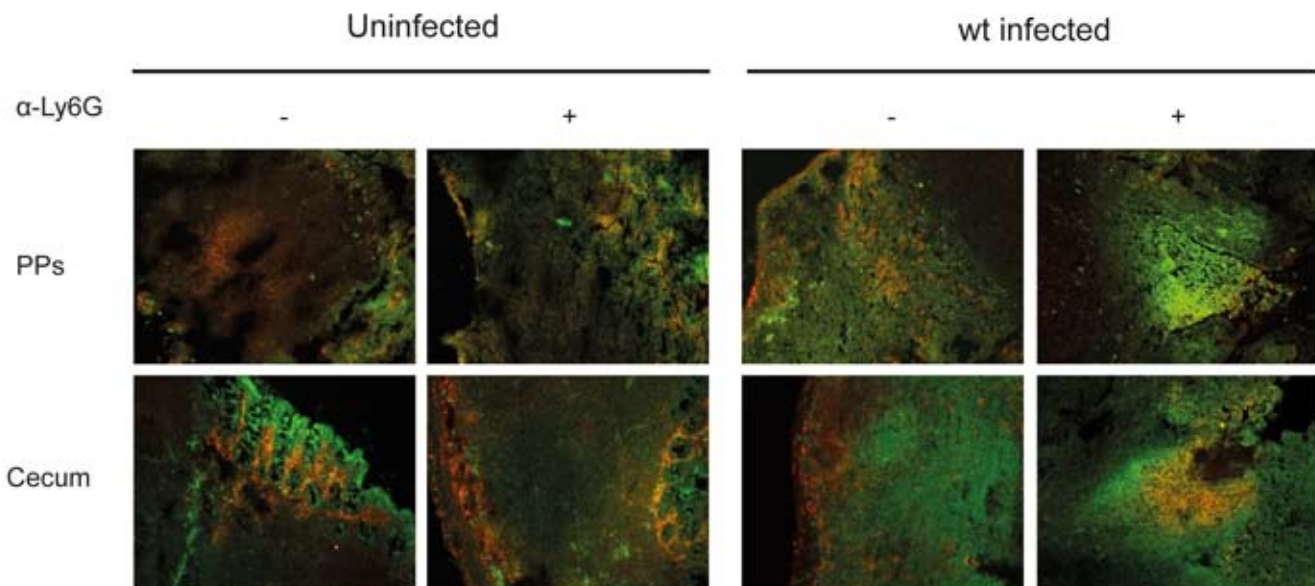


Fig. S4. Inflammatory macrophages increase in PPs and cecum, but not MLN of PMN-depleted mice upon infection.

PPs and cecum from undepleted and PMN-depleted BALB/c mice, uninfected or infected with wt *Y. pseudotuberculosis* were collected and analyzed for the presence of inflammatory macrophages by double immunofluorescence combining α -Ly6C (green) and α -F4/80 (red). Inflammatory macrophages express both Ly6C and F4/80 and will be yellow or orange when stainings are overlaid. Pictures of representative stainings at 20x magnification are shown.