

Fig. S7 Preparation of flurbiprofen-immobilized beads.

FG beads were incubated with 4'-hydroxy flurbiprofen and K_2CO_3 in DMF for 24 h at 60 °C.

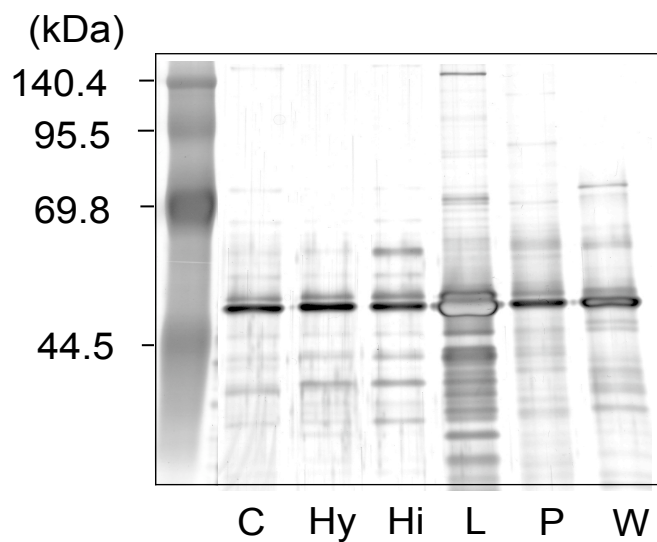


Fig. S8 Flurbiprofen-bound proteins were analyzed in other tissue lysates.

C: cerebral cortex, Hy: hypothalamus, Hi: hippocampus, L: liver, P: pancreas, W: white adipocyte.