

Supplemental figures

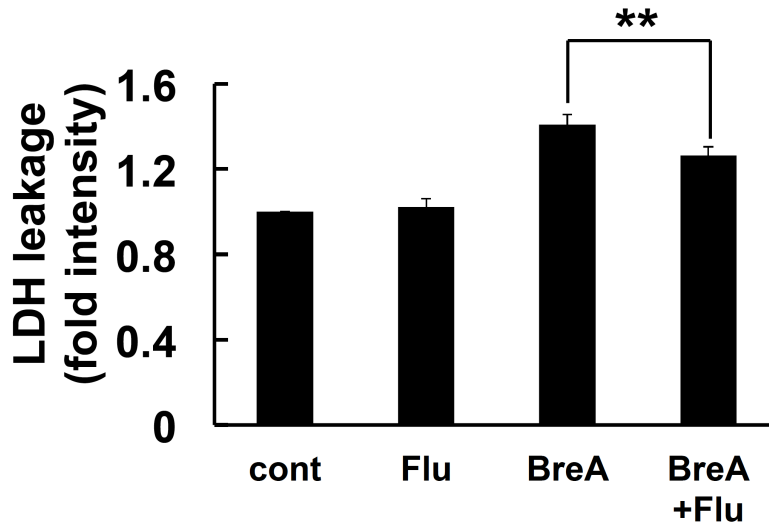


Fig. S1 Flurbiprofen inhibited ER stress-induced cell death.

SH-SY5Y cells were treated with brefeldin A (30 ng/mL) in the presence or absence of flurbiprofen (Flu) for 48 h. LDH activity was then measured as an indicator of cytotoxicity. $**P < 0.01$ $n=8$.

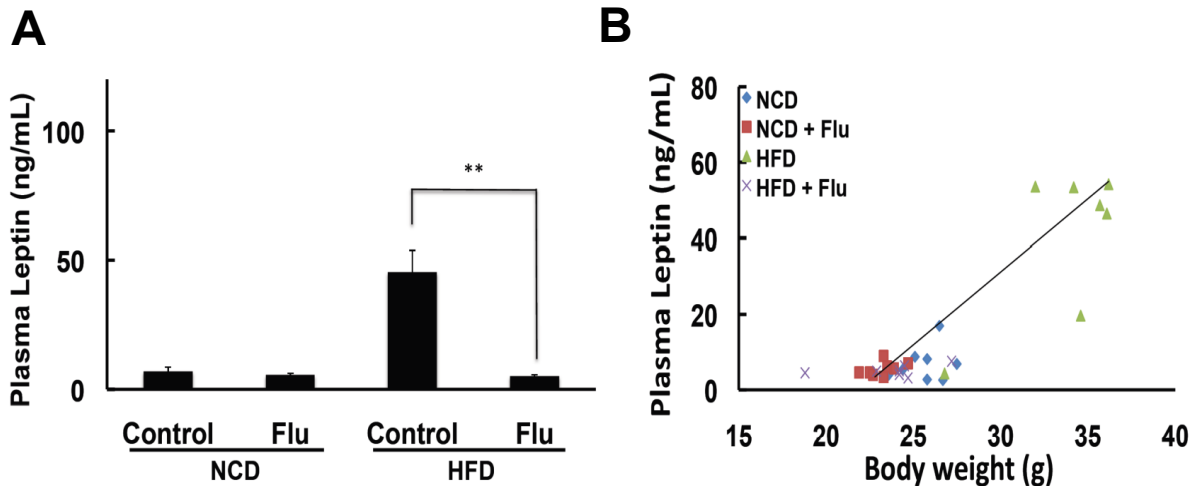


Fig. S2 Circulating leptin levels were normalized by flurbiprofen treatment

(A) Flurbiprofen inhibited the high-fat diet (HFD)-induced elevation of circulating leptin levels in fasted mice. Mice were fed a normal chow diet (NCD) or high-fat diet (HFD) with or without flurbiprofen (Flu) for 8 weeks. Plasma leptin levels were measured 17 h after fasting. We observed that flurbiprofen can reduce plasma leptin levels even in a fasted mice. $n = 7 \sim 8$ per group. $***P < 0.001$ v.s. high-fat diet. (B) Leptin levels were positively correlated with body weight.