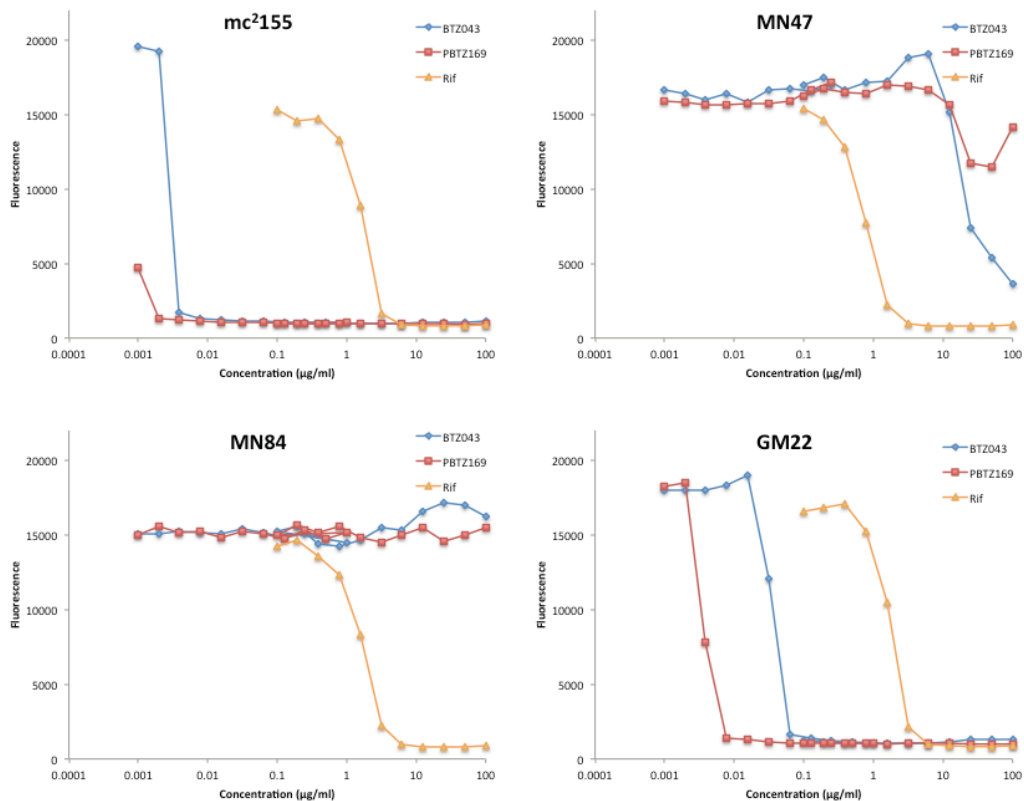


## Supplementary figures



**Figure S1. Susceptibility of BTZ-resistant mutants of *M. smegmatis* to PBTZ169.** Susceptibility was measured using REMA with fluorescence units shown on the Y-axis. **A.** Wild-type parental strain mc<sup>2</sup>155; **B.** BTZ-resistant mutant MN47 (Cys394Ser); **C.** BTZ-resistant mutant with MN84 (Cys394Ser); **D.** BTZ-resistant mutant GM22 overproducing NfnB nitroreductase.