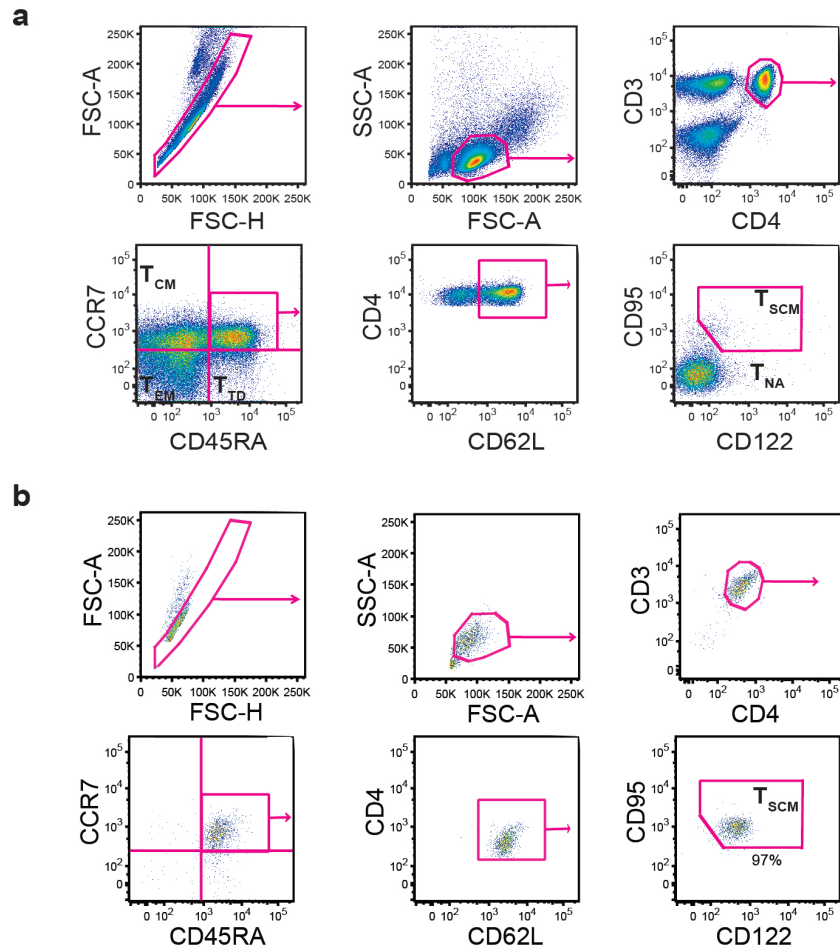


Supplementary Figure 1



Supplementary Figure 1: Flow cytometric gating and sorting strategy for CD4⁺ T_{SCM} cells. (a): Dot plots demonstrating the sequential gating process used for identification and isolation of CD4⁺ T_{SCM} cells. (b) Assessment of the purity of sorted CD4⁺ T_{SCM} cells by flow cytometric re-analysis of sorted CD4⁺ T_{SCM} cells.