

Supplementary information

Involvement of Autophagy in Antitumor Activity of Folate-appended Methyl- β -cyclodextrin

Risako Onodera¹, Keiichi Motoyama¹, Nao Tanaka¹, Ayumu Ohyama^{1,3}, Ayaka Okamatsu¹, Taishi Higashi¹, Ryusho Kariya², Seiji Okada² and Hidetoshi Arima^{1,3,*}

¹ *Department of Physical Pharmaceutics, Graduate School of Pharmaceutical Sciences, Kumamoto University, 5-1 Oe-honmachi, Chuo-ku, Kumamoto 862-0973, Japan,*

² *Division of Hematopoiesis, Center for AIDS Research, Kumamoto University, 2-2-1 Honjo, Chuo-ku, Kumamoto 860-0811, Japan*

³ *Program for Leading Graduate Schools “HIGO (Health life science: Interdisciplinary and Global Oriented) Program”, Kumamoto University*

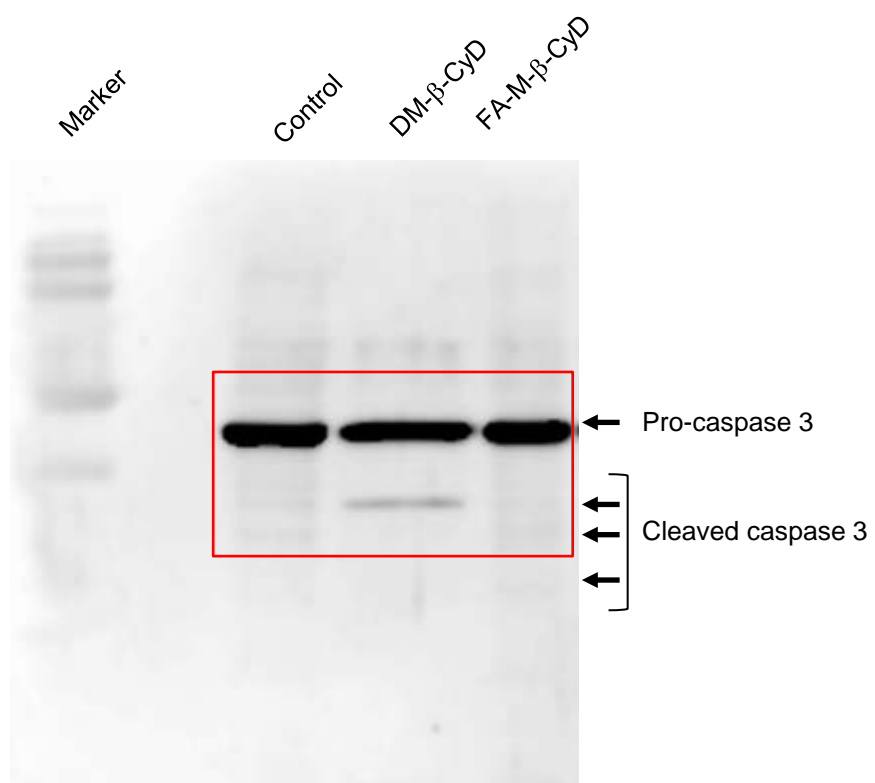
**Corresponding author*

Hidetoshi Arima, Department of Physical Pharmaceutics, Graduate School of Pharmaceutical Sciences, Kumamoto University, 5-1 Oe-honmachi, Chuo-ku, Kumamoto 862-0973, Japan

TEL.: +81 96 371 4160

FAX +81 96 371 4420

E-mail address: arimah@gpo.kumamoto-u.ac.jp



Supplementary Fig. 1