

## **Supplemental Material to:**

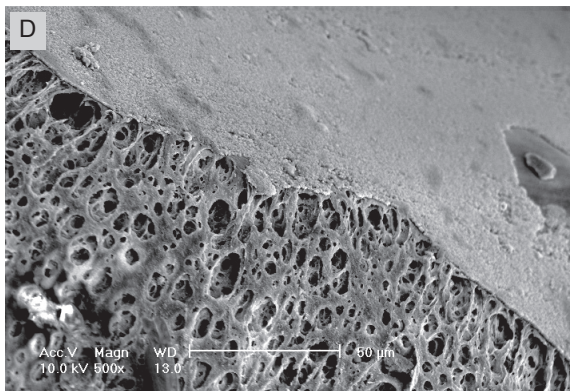
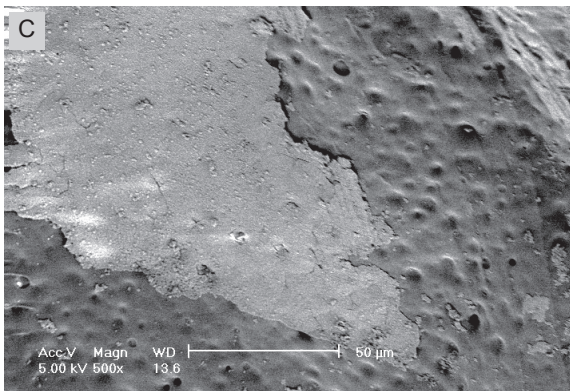
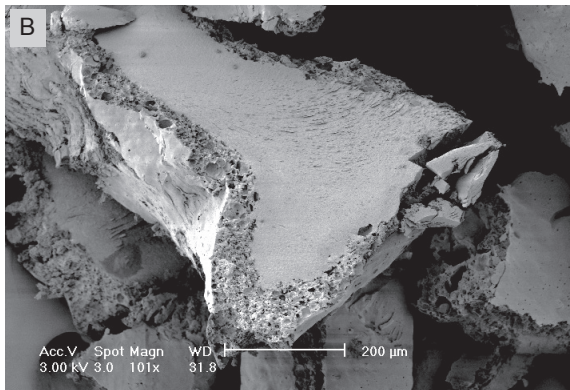
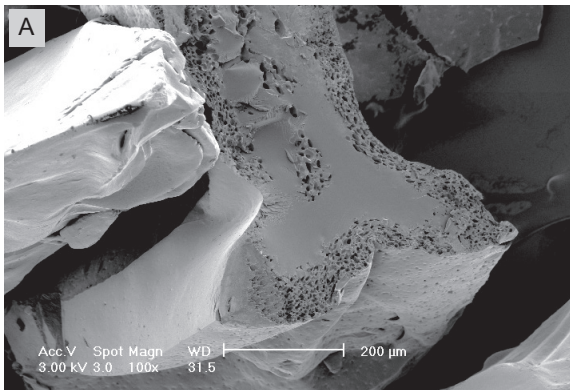
**Charlène B Danoux, Davide Barbieri, Huipin Yuan,  
Joost D de Bruijn, Clemens A van Blitterswijk,  
and Pamela Habibovic**

**In vitro and in vivo bioactivity assessment of a polylactic  
acid / hydroxyapatite composite for bone regeneration**

**Biomatter 2013; 4(1)**

**<http://dx.doi.org/10.4161/biom.27664>**

**<http://www.landesbioscience.com/journals/biomatter/article/27664/>**



**Supplementary Figure 1.** SEM micrographs of cross-sections of PLA and PLA/HA particles immersed in SPS for 12 weeks (a and b respectively, scale bars: 200 $\mu$ m) and of surface of PLA and PLA/HA immersed in SBF for 12 weeks (c and d respectively, scale bars: 50 $\mu$ m).