

Supplemental information

A Novel Structural Unit in the N-Terminal Region of Filamins

Ritika Sethi, Jonne Seppälä, Helena Tossavainen, Mikko Ylilauri, Salla Ruskamo, Olli T. Pentikäinen, Ulla Pentikäinen, Perttu Permi, and Jari Ylänne

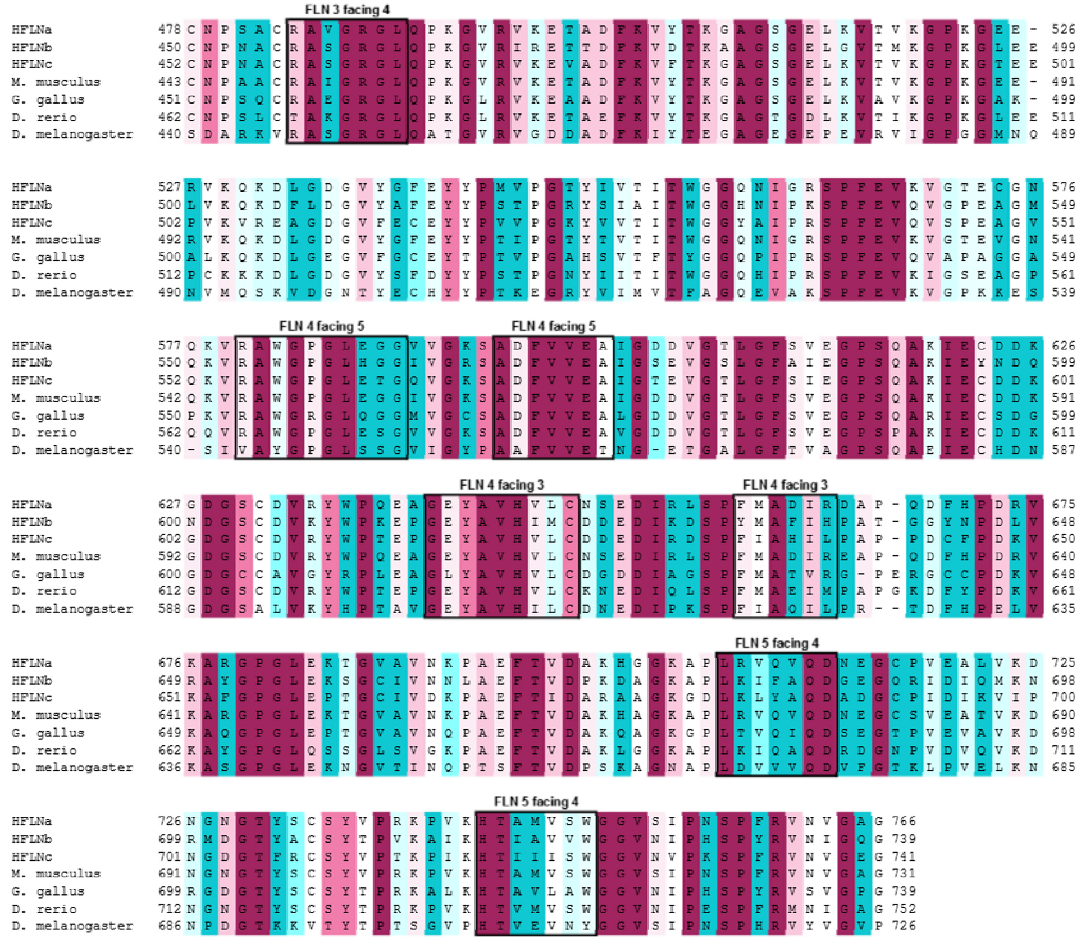
Inventory of Supplemental information

Figure S1. Residue conservation in FLN 3-5 (Related to Figure 3).

Figure S2. Overlay of the ^1H - ^{15}N HSQC spectra of FLNc5 (red) with FLNc4-5 (blue). Related to Figure 4C.

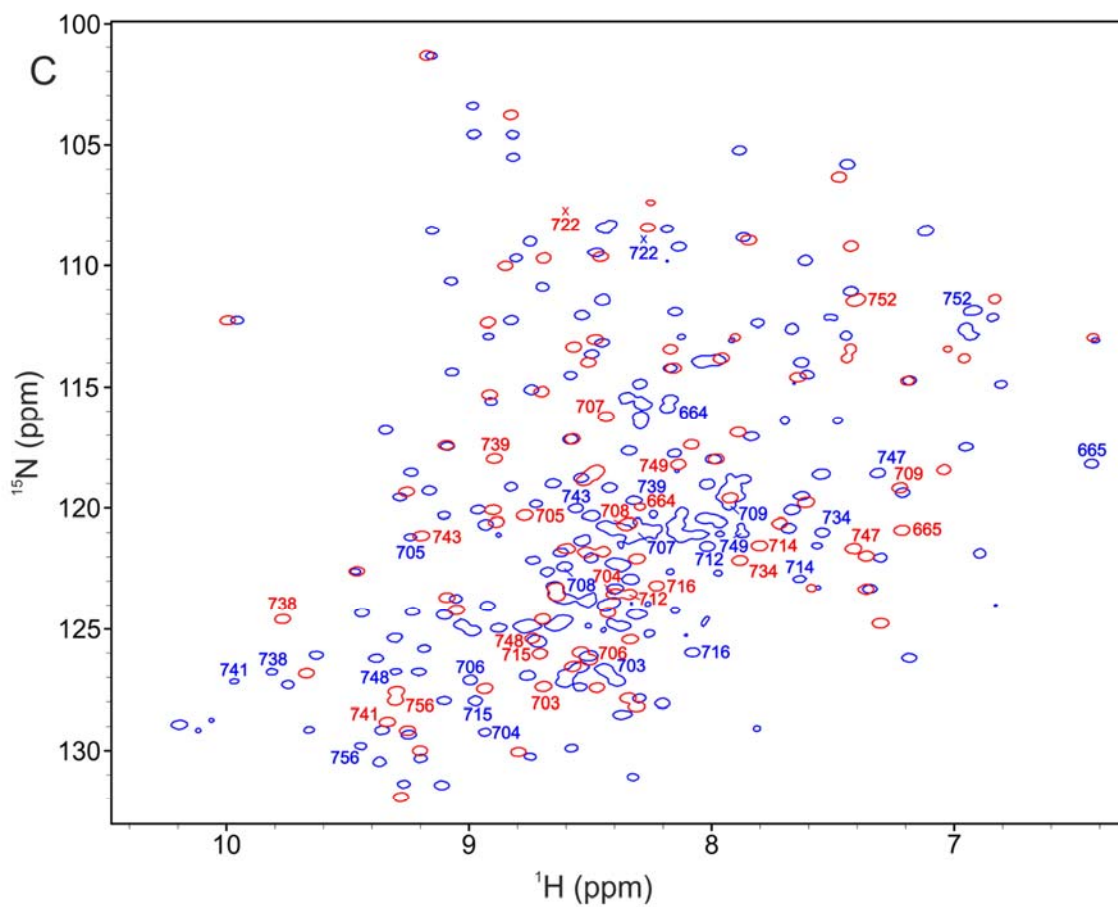
Figure S3. ^1H - ^{15}N HSQC spectra overlay: (A) FLNa3-5 + GPIb peptide; and (B) FLNc4-5 + GPIb peptide (Related to Figure 6G and H).

Figure S1. Residue conservation in FLN 3-5. Related to Figure 3.



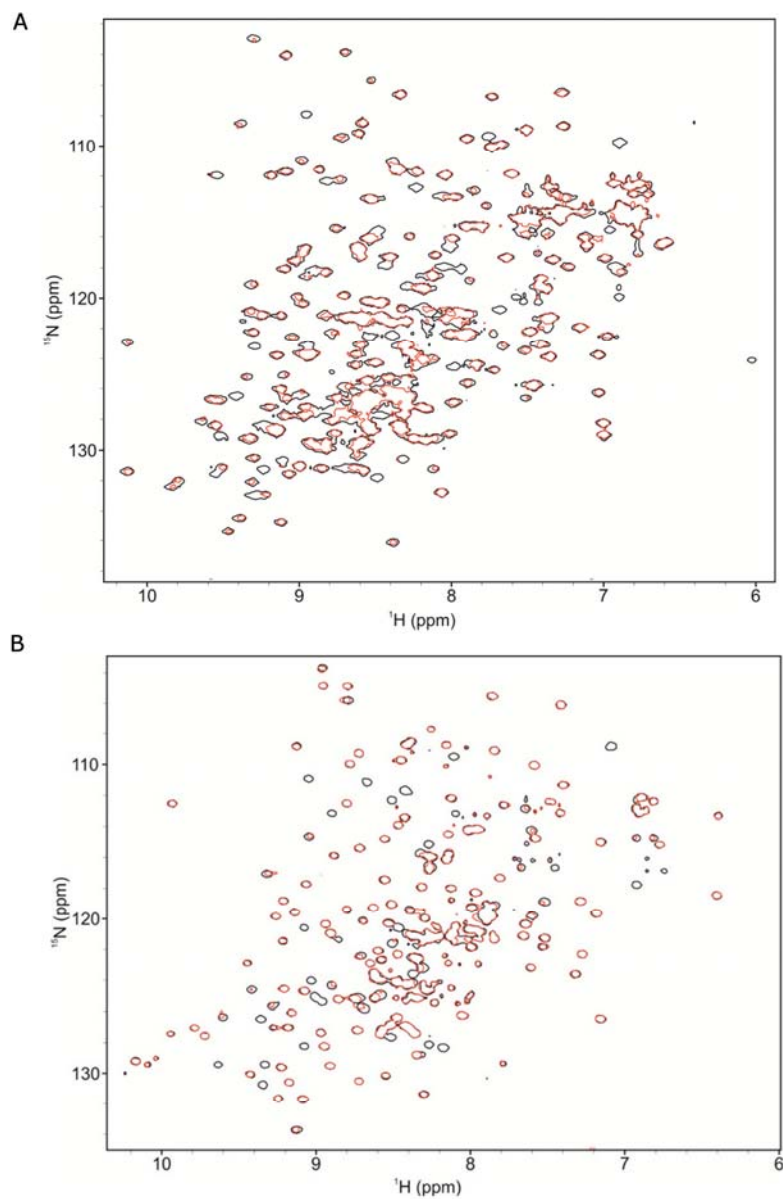
Sequence alignment with the same color code as Figure 3 is shown with the interfaces highlighted with a black box

Figure S2. Overlay of the ^1H - ^{15}N HSQC spectra of FLNc5 (red) with FLNc4-5 (blue). Related to Figure 4C.



The residues shown in blue in Figure 4C are labeled here. The peaks of residue 722 are visible at a lower contour level and their positions are marked with crosses.

Figure S3. ^1H - ^{15}N HSQC spectra overlay: (A) FLNa3-5 + GPIb peptide; and (B) FLNc4-5 + GPIb peptide (Related to Figure 6G and H)



The black peaks represent the ^{15}N HSQC spectrum of the protein alone. Overlaid with this is the 1:1 protein:peptide ^{15}N HSQC spectrum represented with red peaks.