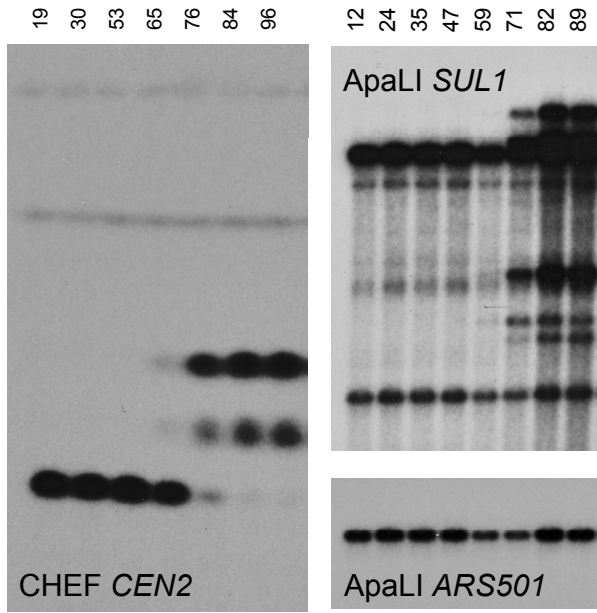
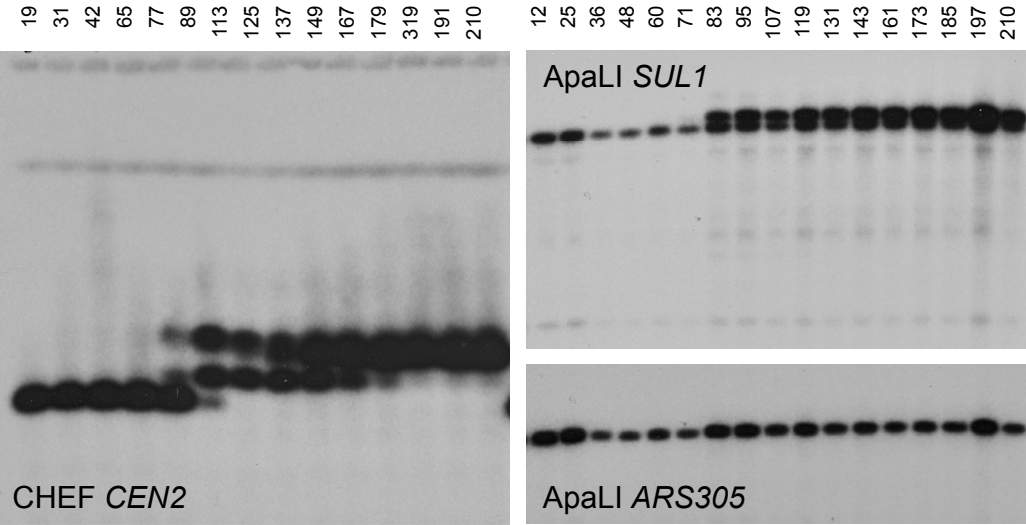


S20101



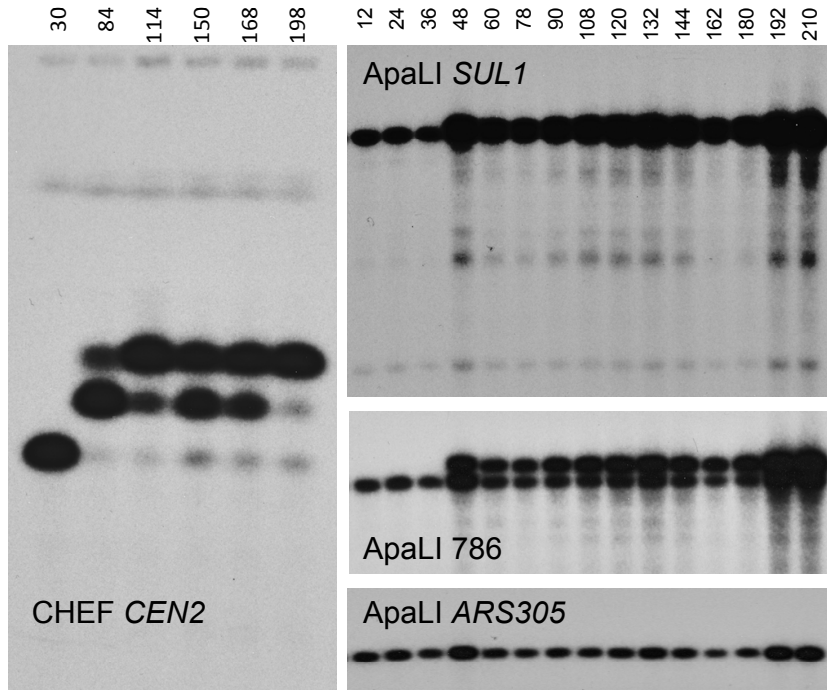
SuppFigure 4-1

S20102



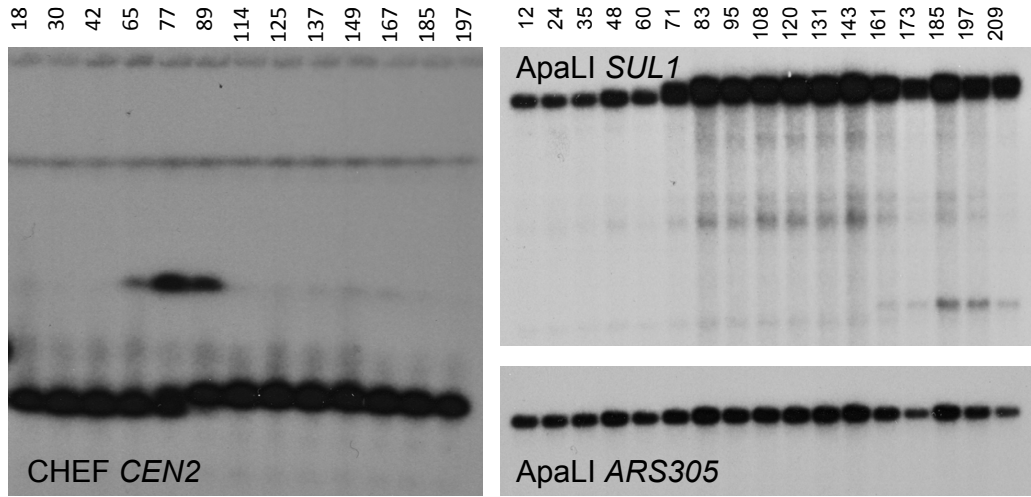
SuppFigure 4-2

S20103



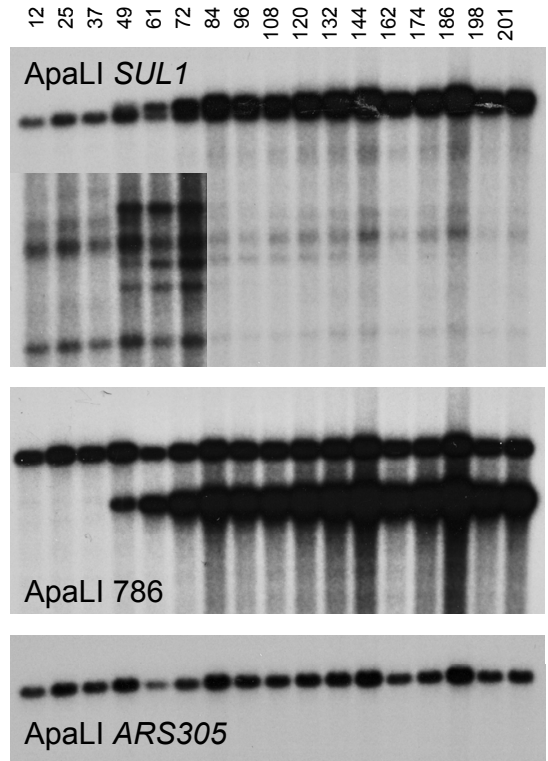
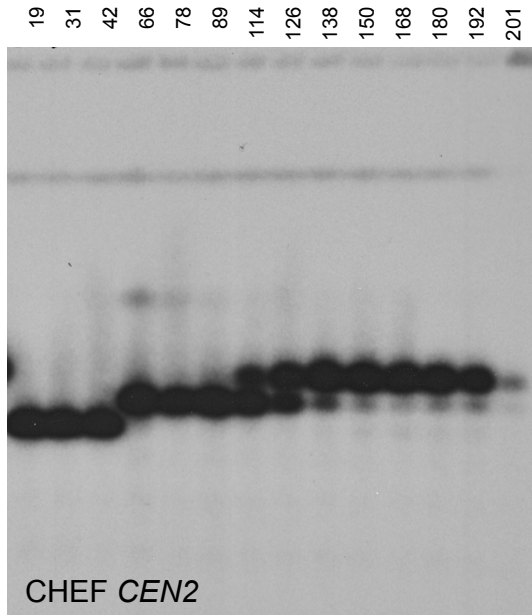
SuppFigure 4-3

S20105



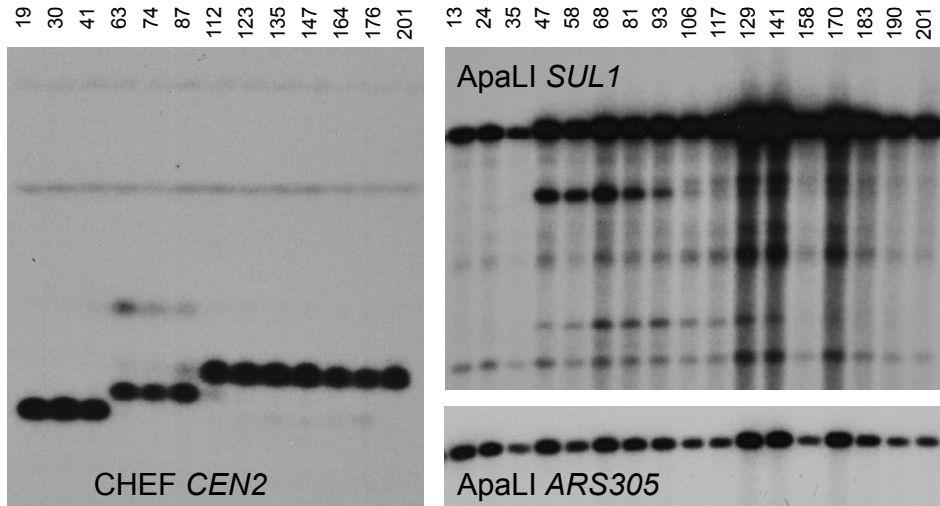
SuppFigure 4-4

S20106



SuppFigure 4-5

## S20107



**Figure S4 Gel analysis of evolving populations S20101-S20107.** LEFT: CHEF gels of population samples at the indicated generations reveal the dynamics of chromosome II alterations in each of the seven evolution experiments. The hybridization probe is immediately adjacent to *CEN2*. Numbers across the top refer to generations of sulfate limited growth. RIGHT: *ApaLI* digestion and electrophoretic separation of population DNA samples from each of the seven evolution experiments. TOP: Hybridization of the blot with *SUL1* detects telomere proximal junction fragments in addition to the ancestral fragment. Hybridization with probe 786 detects centromere proximal junction fragments in addition to the ancestral fragment. For Pop6, an inset of a darker exposure reveals transient minor fragments that likely correspond to the transient low abundance form of chromosome II seen in the Pop6 CHEF gel. BOTTOM: Hybridization of the blot with *ARS305* serves as a loading control.