

Figure e-1

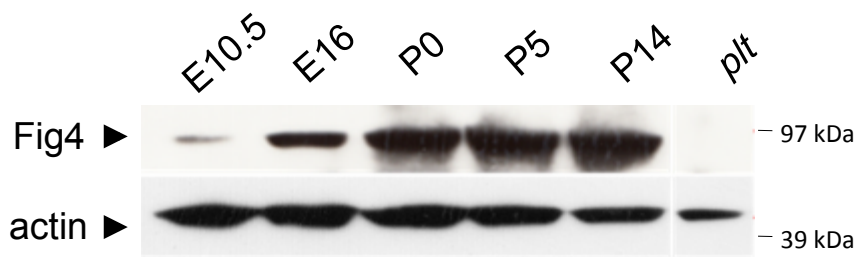


Figure e-1: Expression profile of Fig4. Western blot showing Fig4 expression during embryonic and postnatal development in C57BL/6 mouse brain lysates. Actin was used for internal control.

Figure e-2

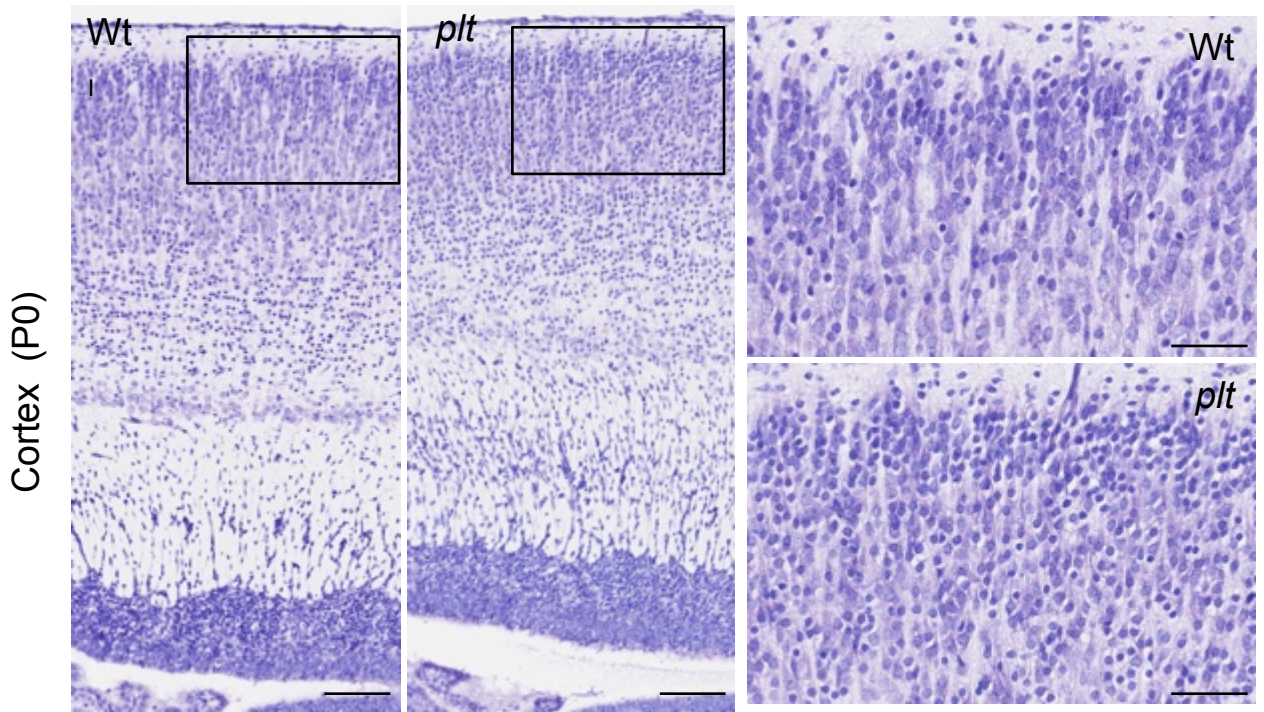


Figure e-2: Histological and cytological alterations at P0. Nissl staining of cortex of Wt and *plt* mouse. Boxed areas showed a higher cellular density in *plt* than Wt littermates. Many pyknotic cells were present in *plt* mice. Scale bars: 100 μm ; boxed area (50 μm).

Figure e-3

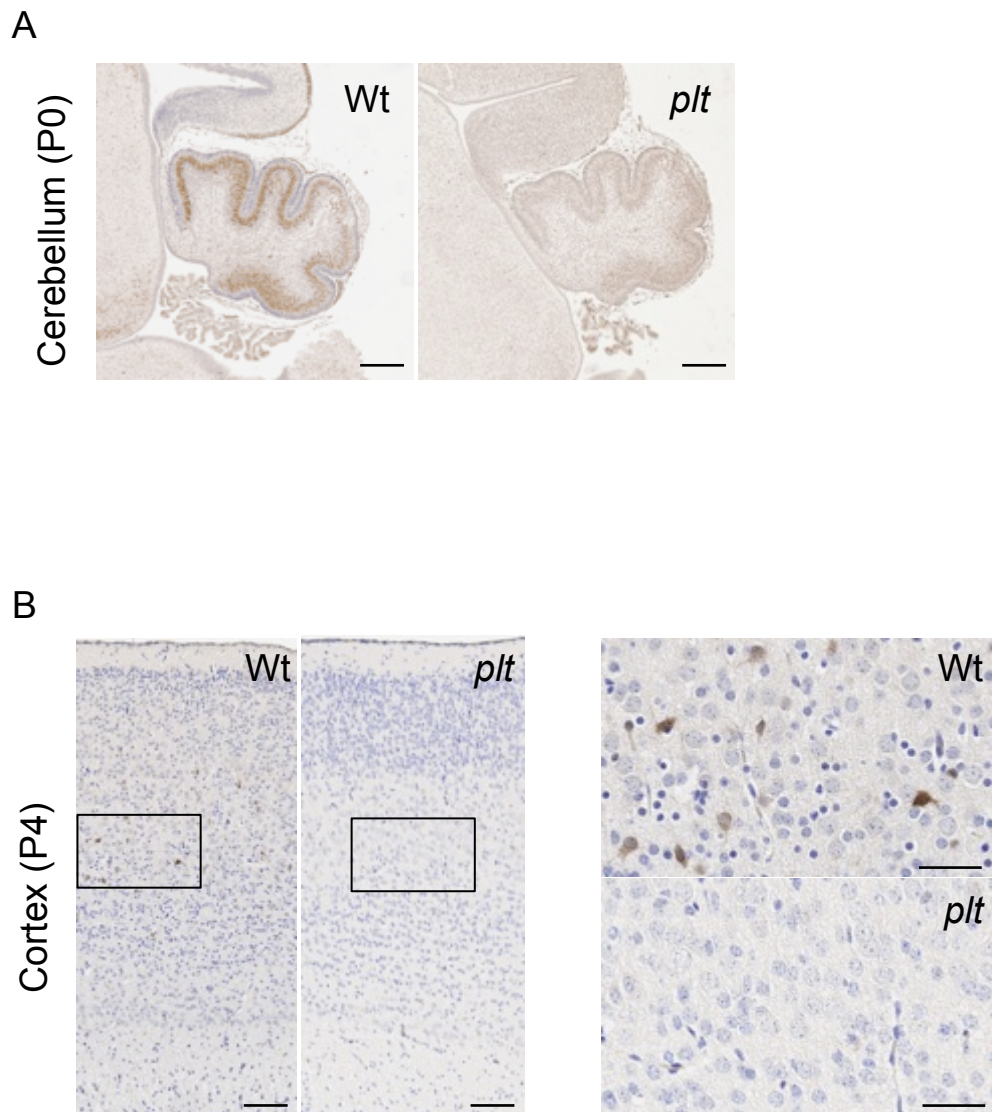


Figure e-3: Calbindin immunohistochemistry. (A) Weak calbindin staining in Purkinje cells of *plt* mice compared to wildtype littermates aged P0. (B). Presence of interneurons (calbindin-labeled cells) in wildtype mice that are almost undetectable in *plt* mice at P4. Scale bars: A, 250 μ m; B, 100 μ m, boxed area (50 μ m).

Figure e-4

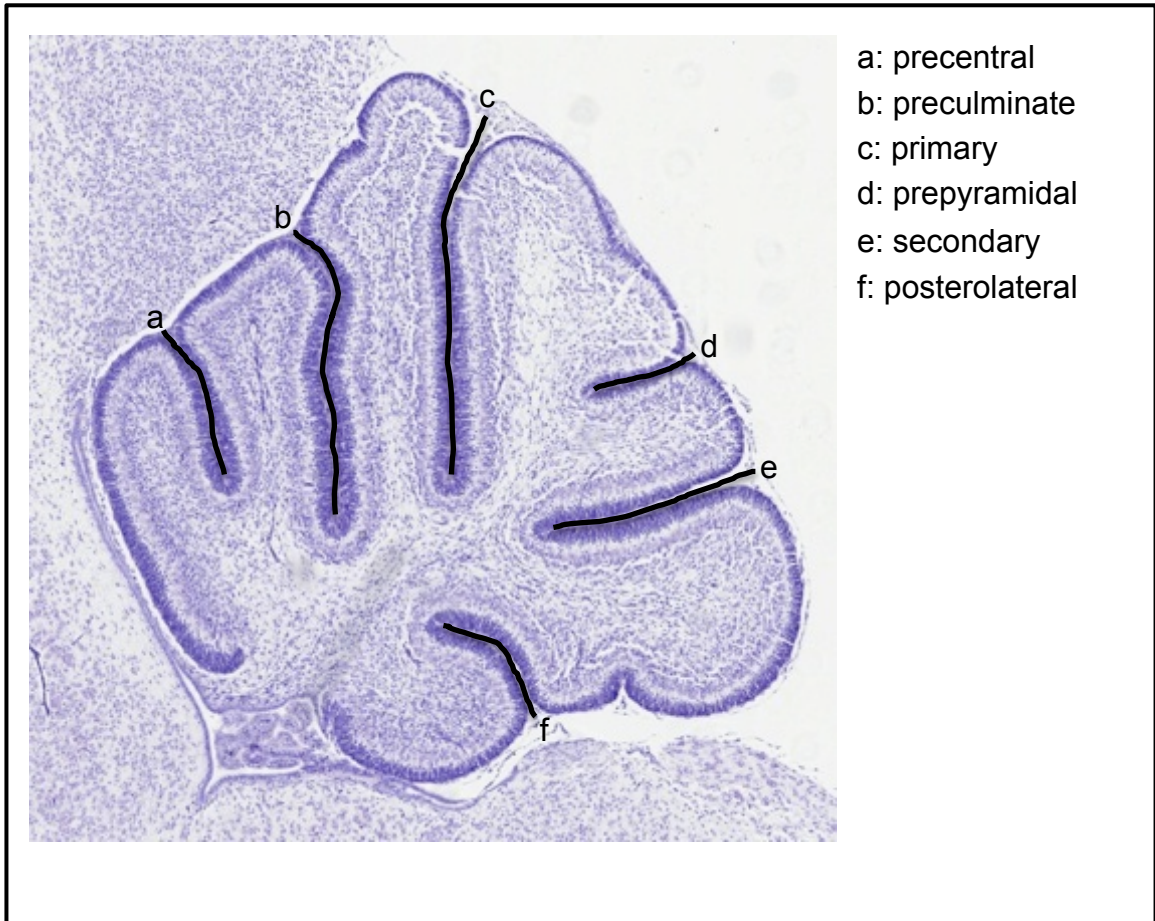


Figure e-4: Midsagittal section of the cerebellum from a wildtype mouse. The 6 measured fissures are the precentral, preculminate, primary, prepyramidal, secondary and posterolateral.