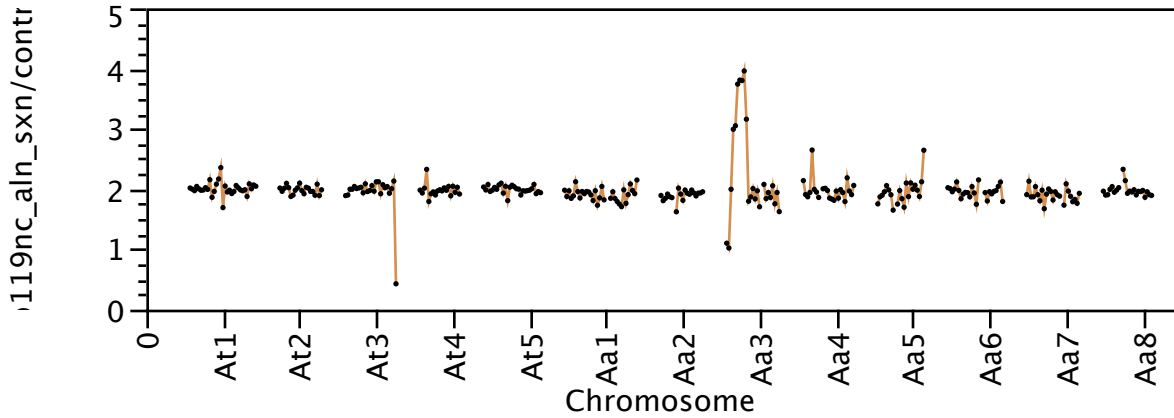
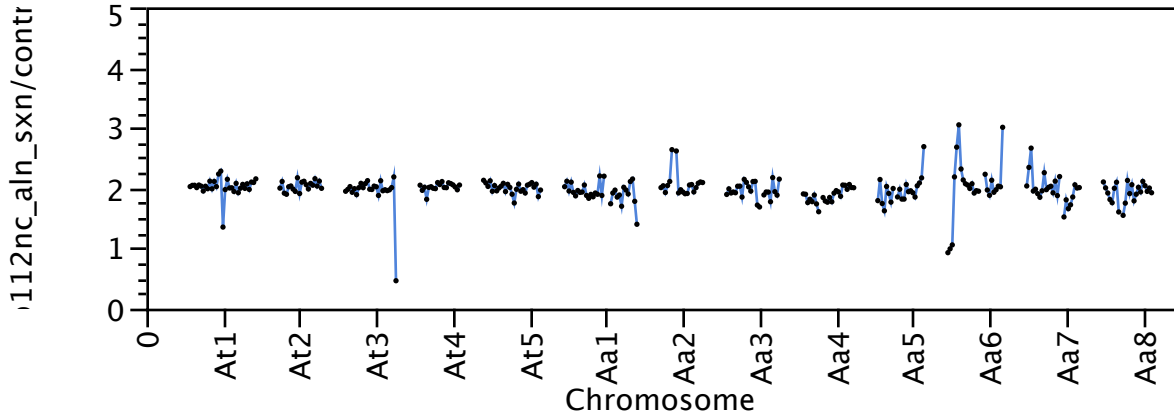
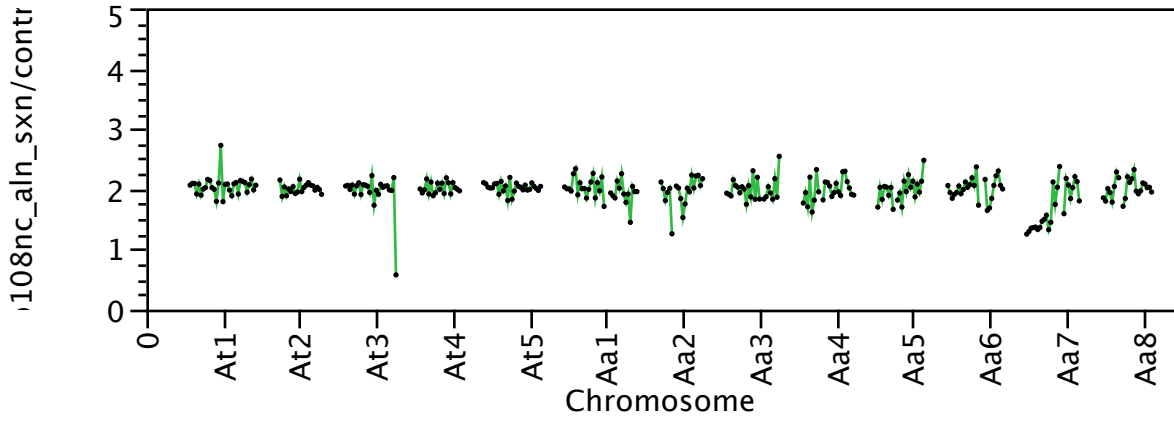
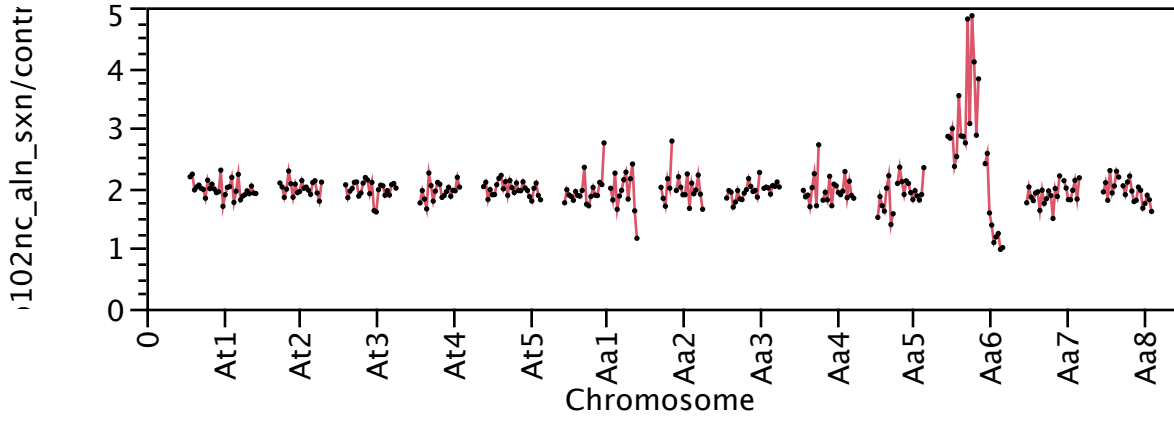


Supplemental Data. Henry et al. (2014). Plant Cell 10.1105/tpc.113.120626

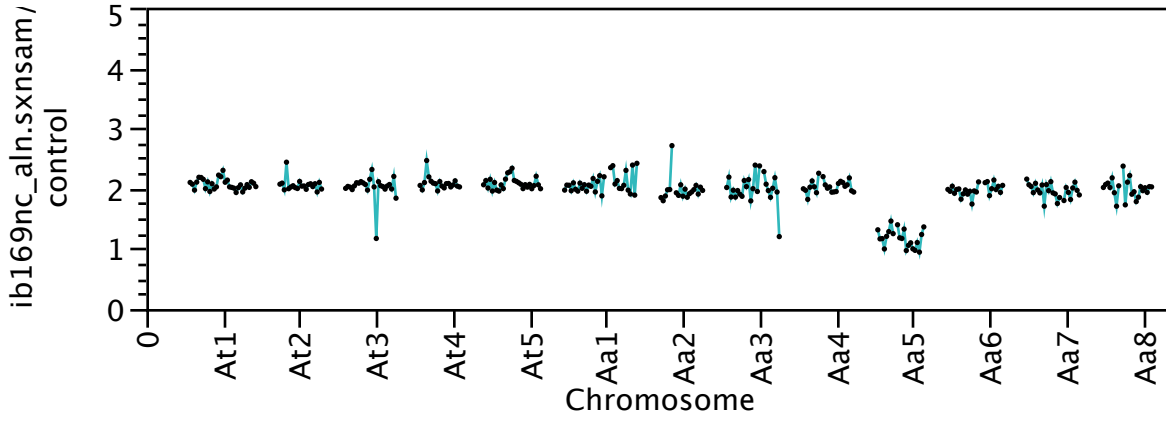
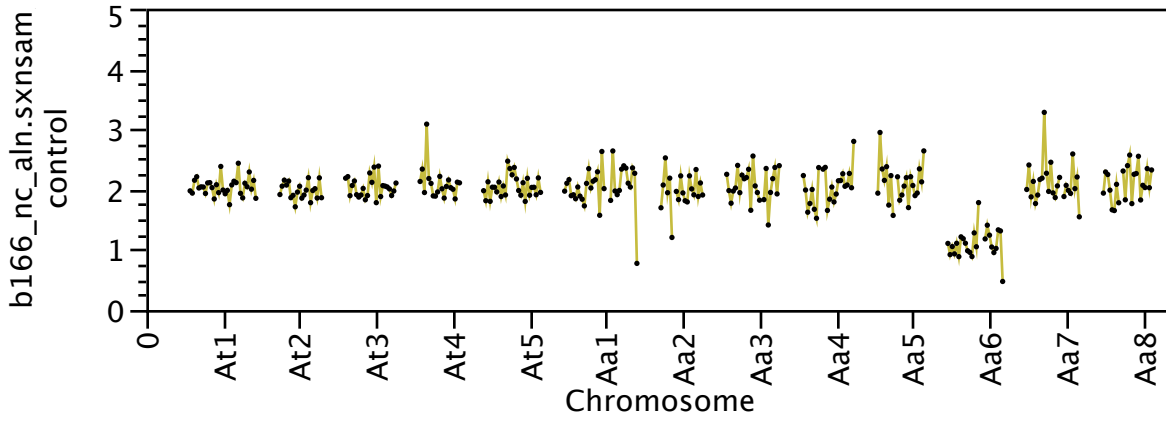
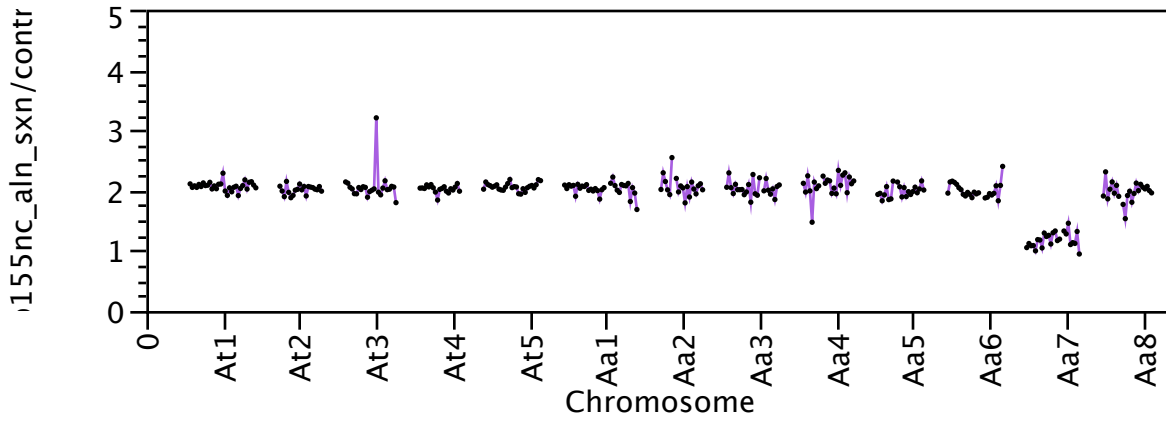
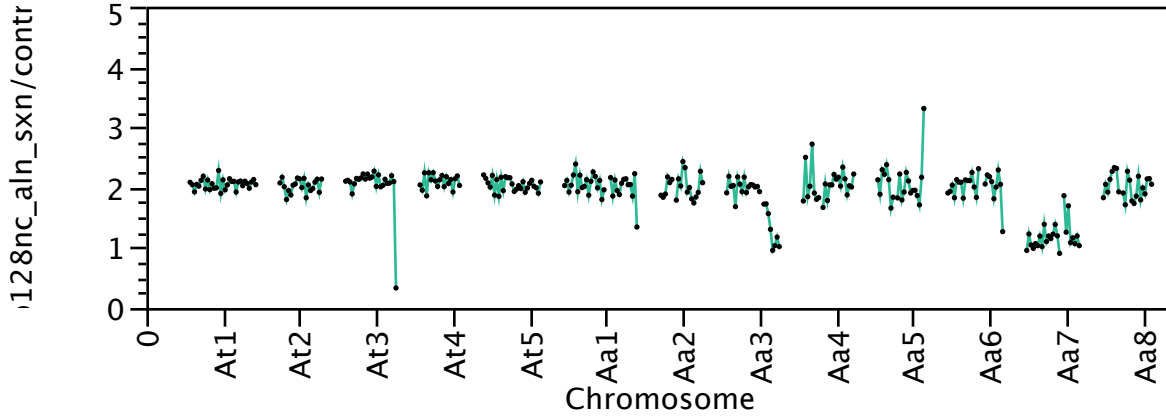
Supplemental Dataset 1 - Karyotype of the 57 individuals exhibiting dosage variation in the Syn x Nat F2 population.

A dosage plot was obtained for each individual from whole genome sequencing data. Sequencing reads were aligned to the reference genome and sorted into consecutive bins along the 13 chromosomes of the allopolyploid genome. For ease of visualization, relative read coverage is normalized such that fragments present in two copies gravitate around 2.0. Changes up or down in relative coverage of consecutive bins indicates variation in dosage and correspond to the addition or deletion of a particular chromosome or chromosomal fragment, respectively. Relative coverage around the centromeric repeats consistently appears noisy most likely because of mis-mapping and poor quality of reference sequence.

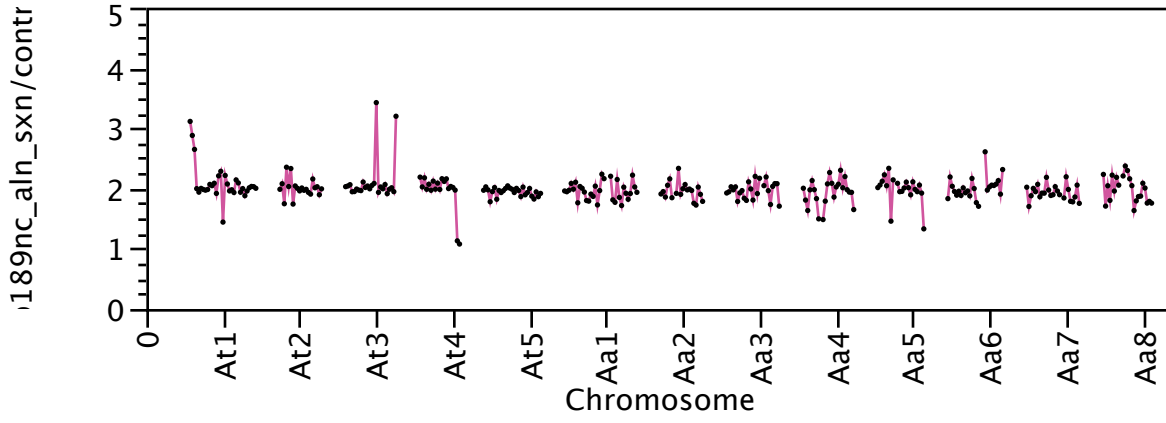
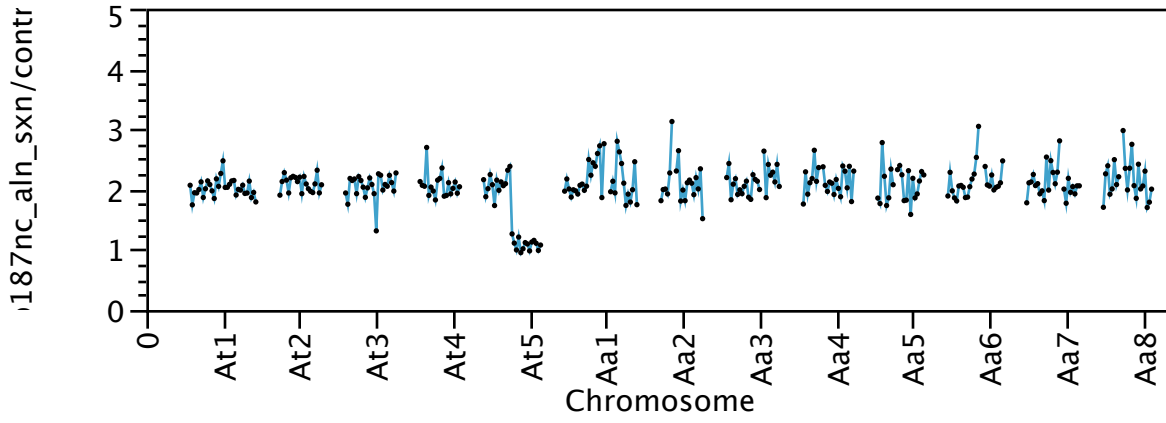
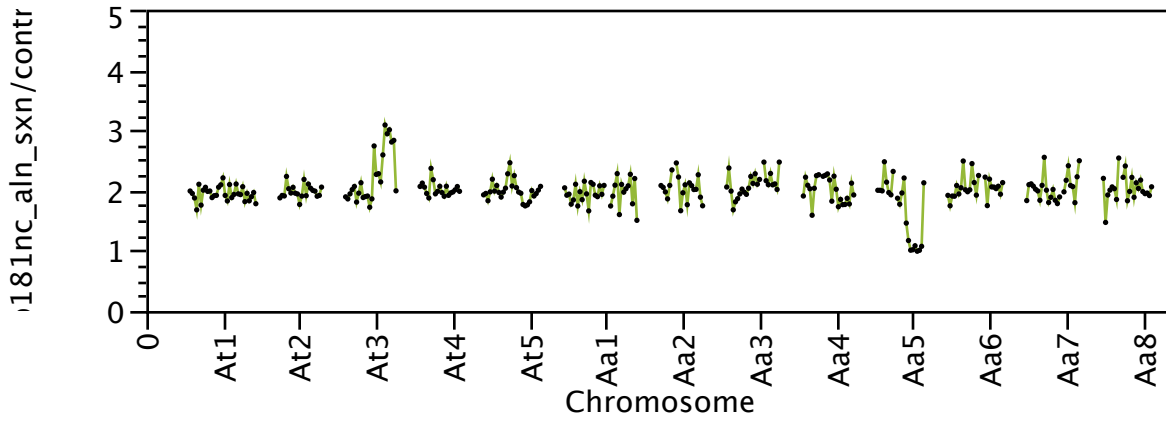
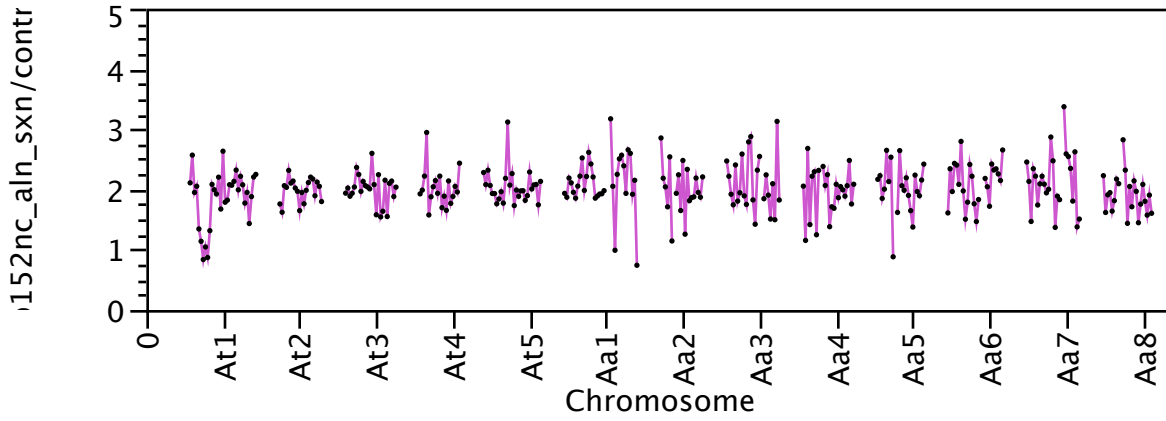
Overlay Plot



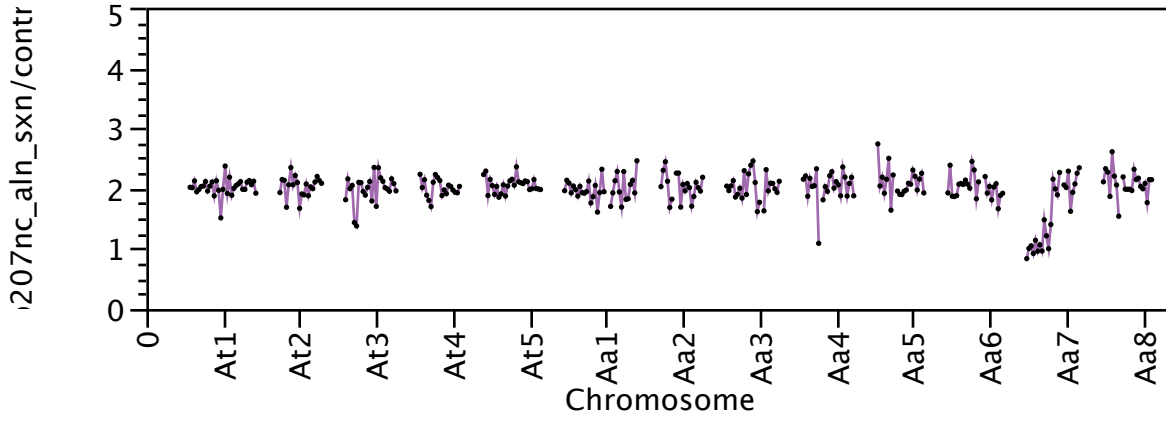
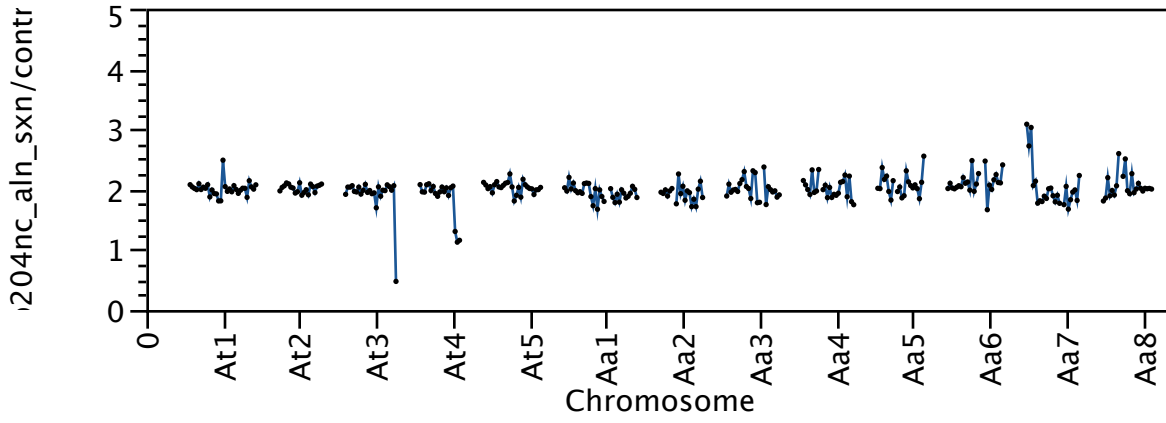
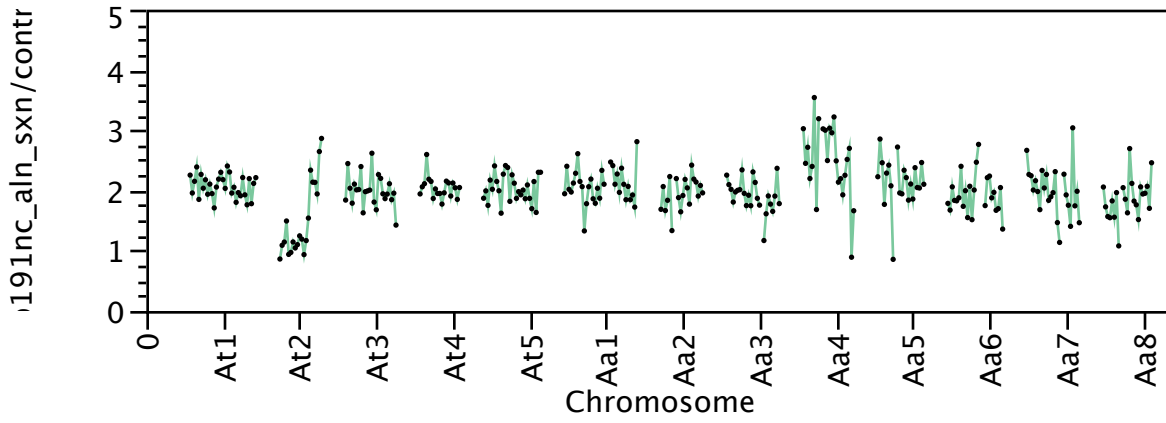
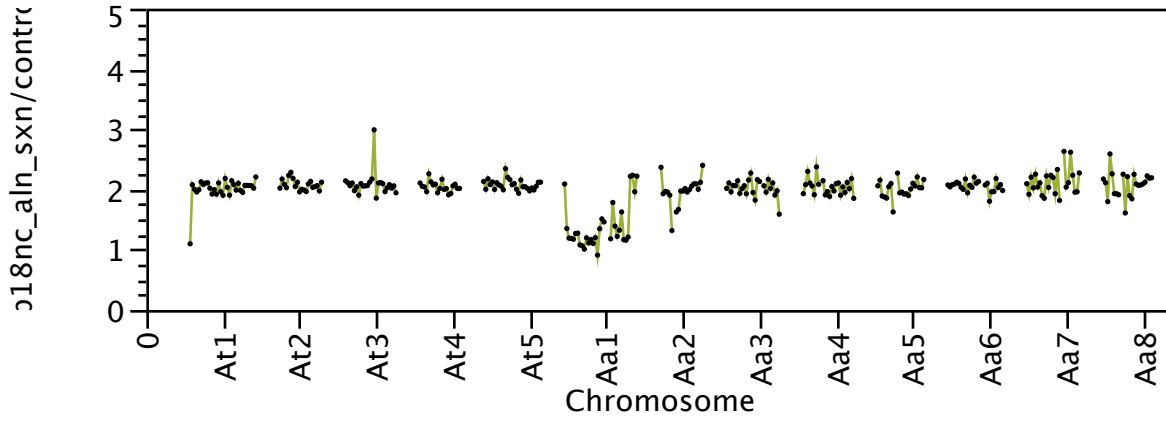
Overlay Plot



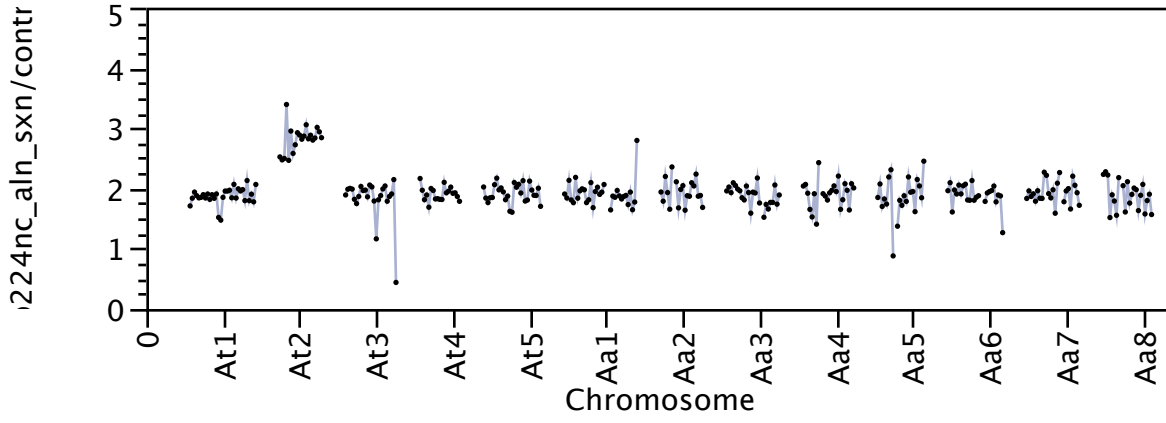
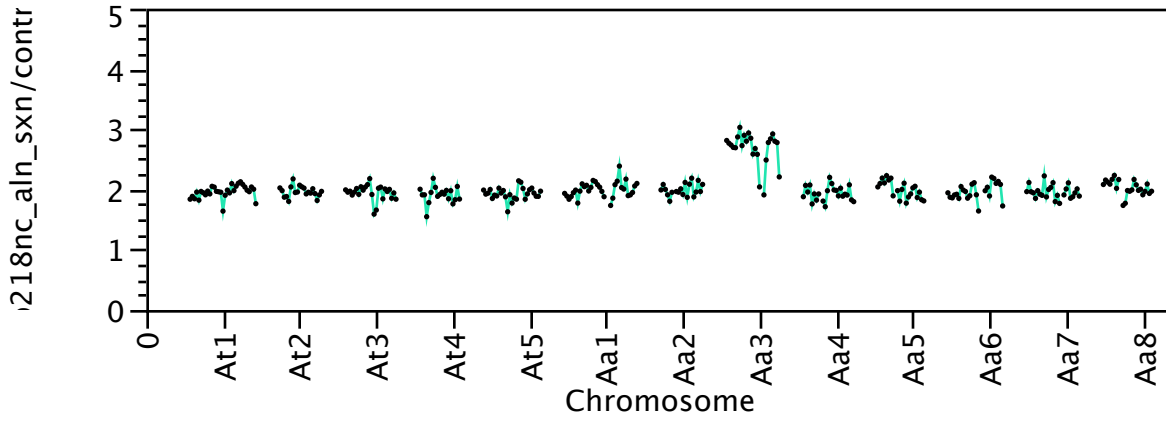
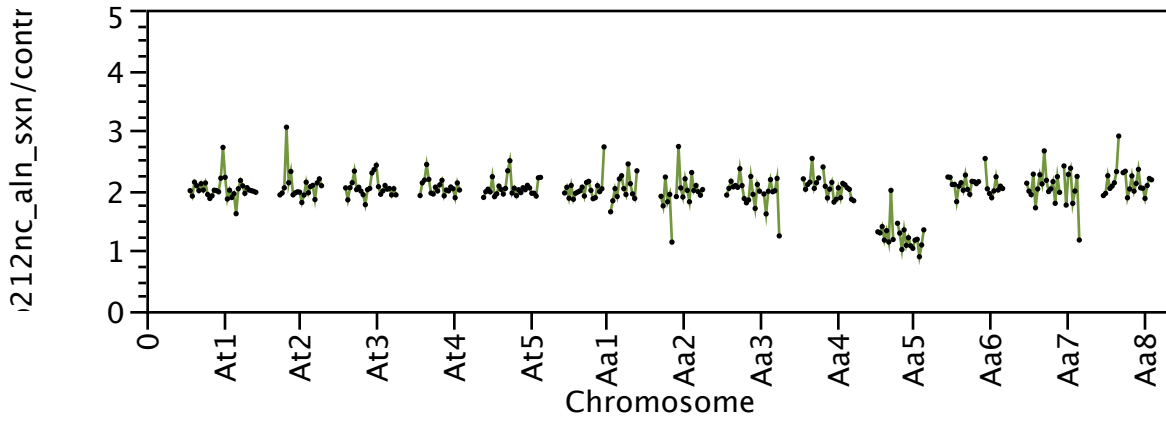
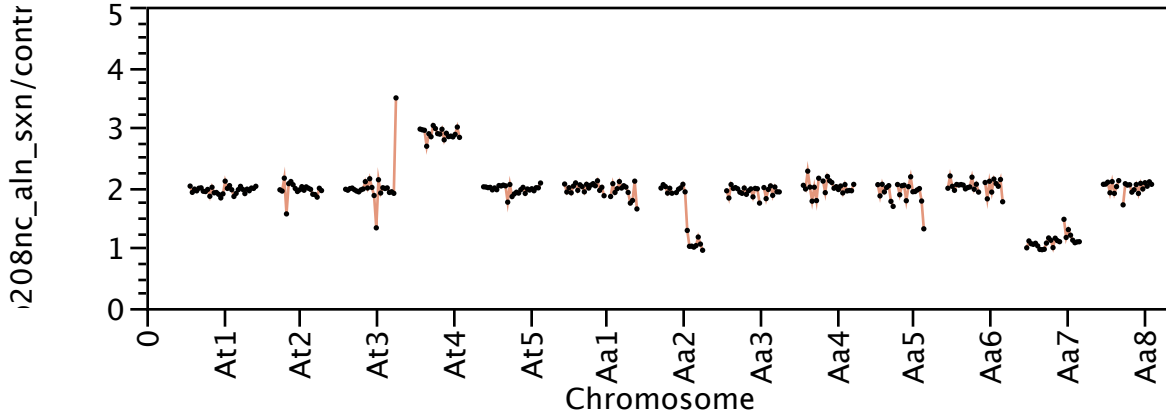
Overlay Plot



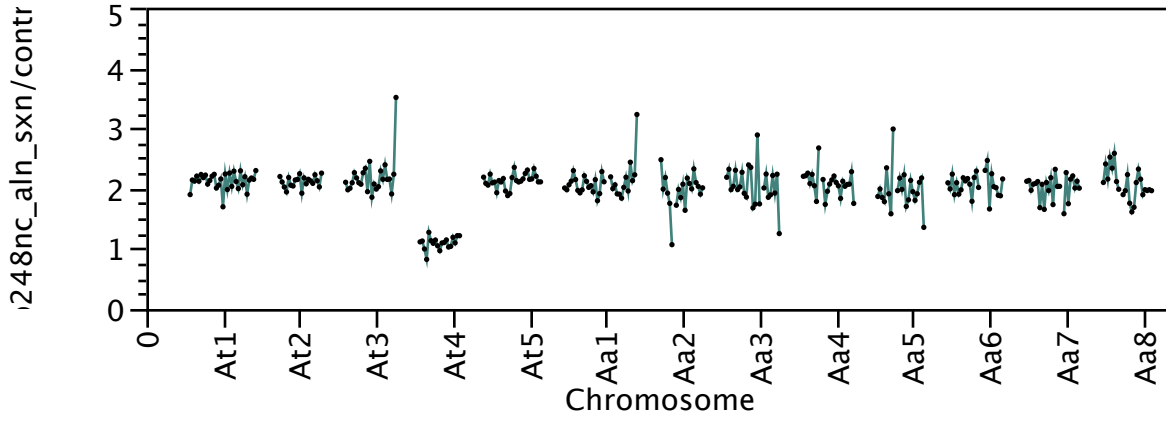
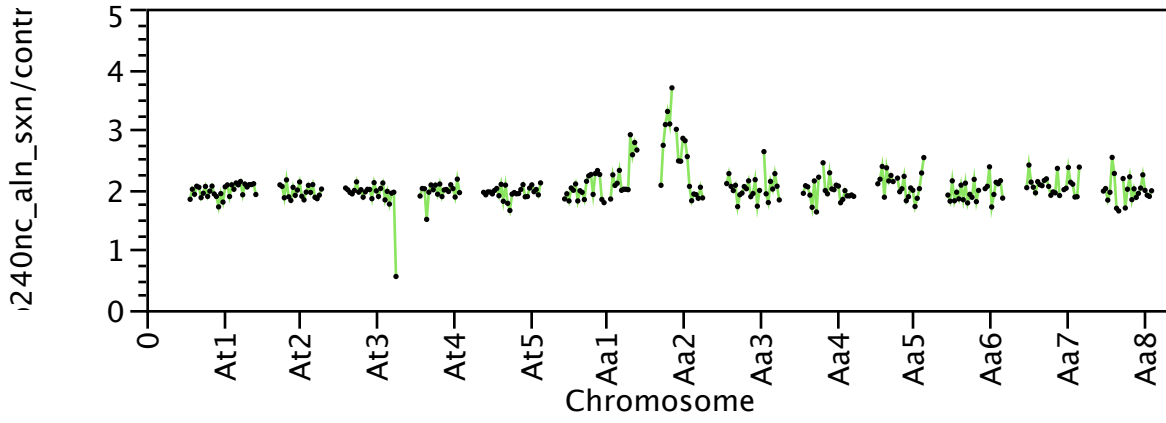
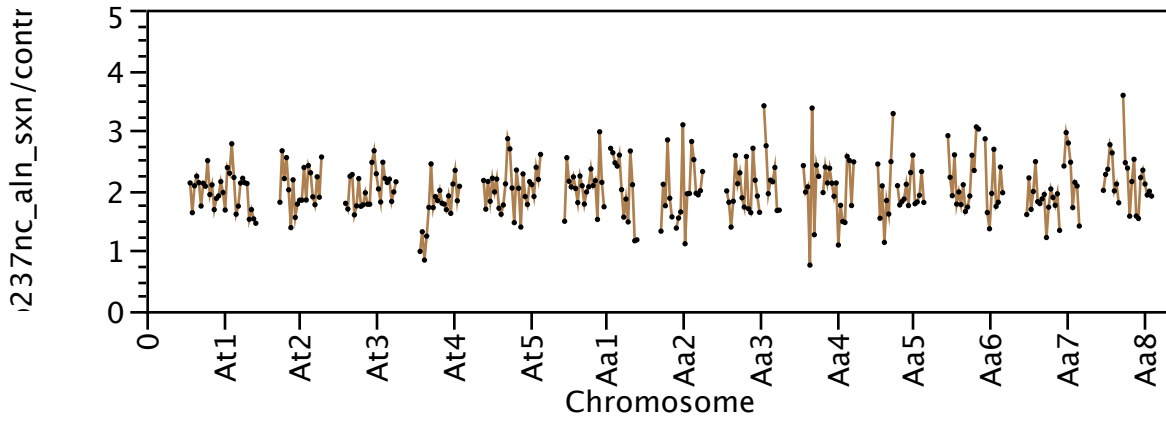
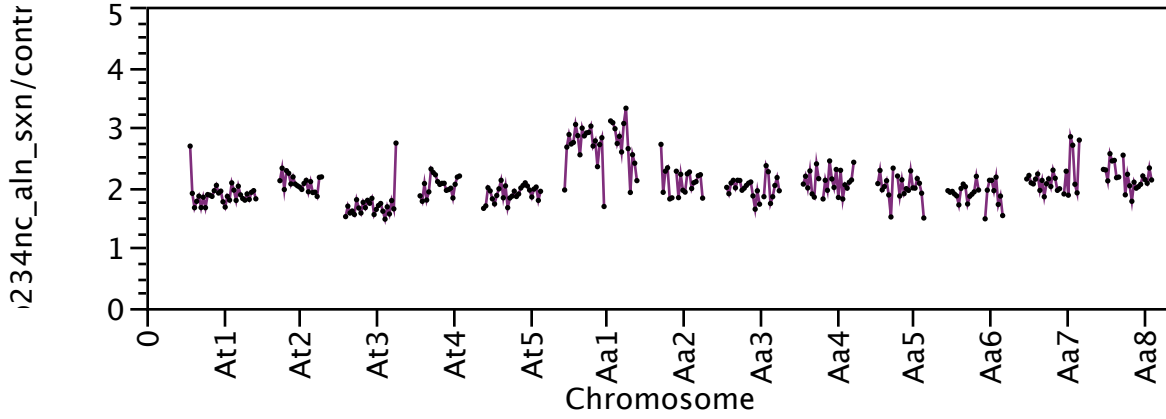
Overlay Plot



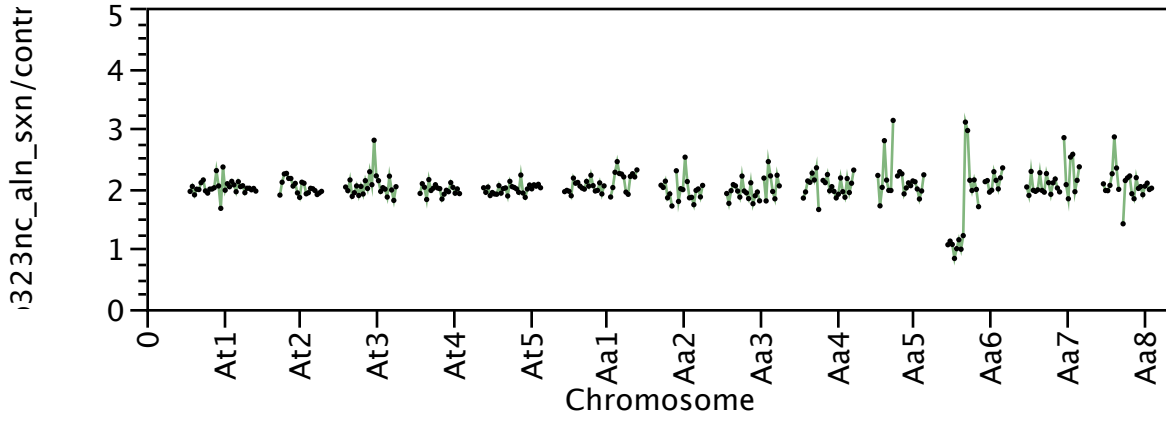
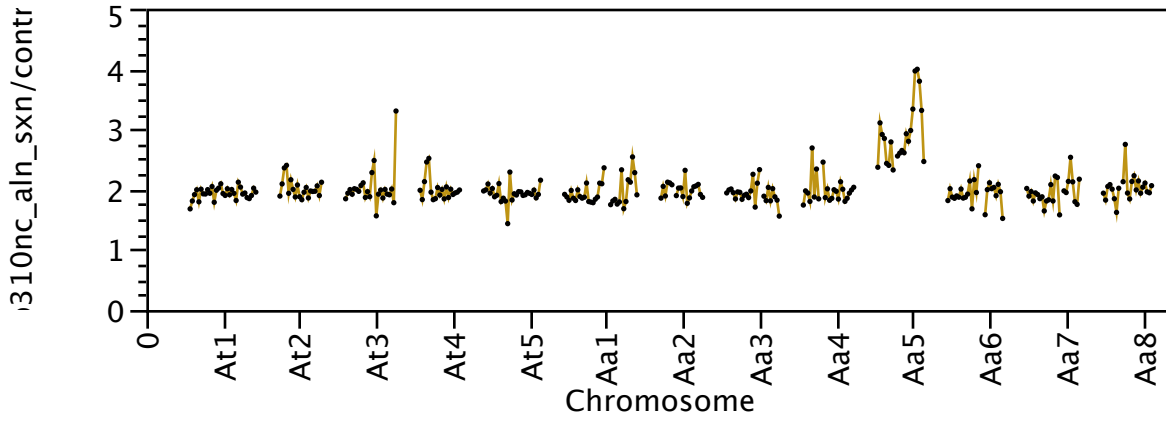
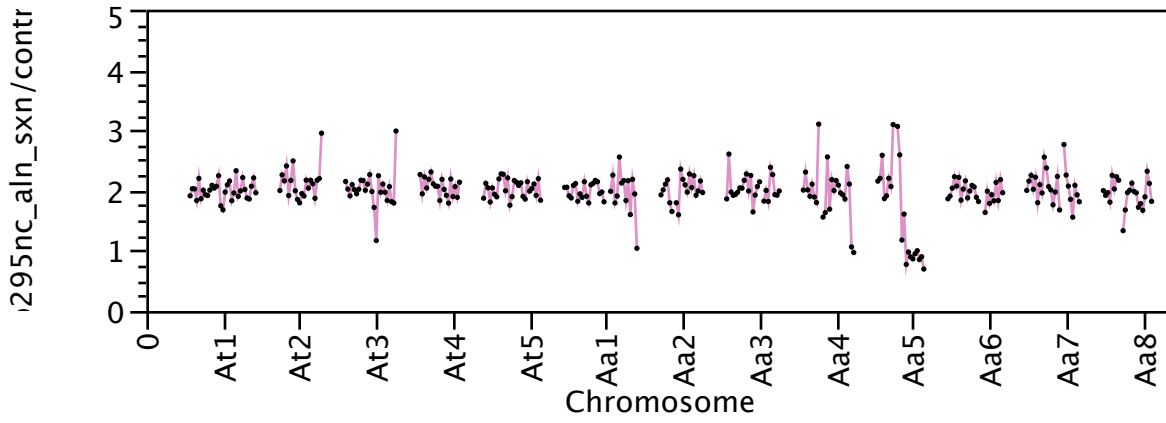
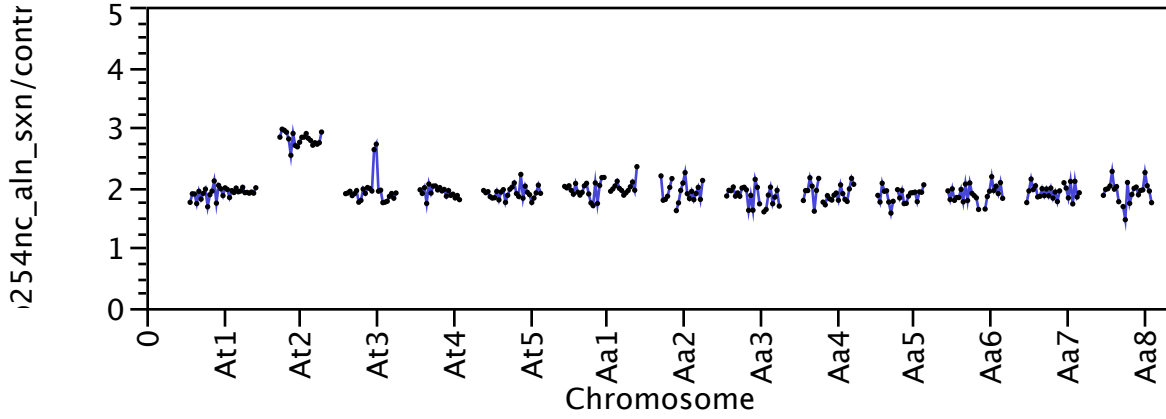
Overlay Plot



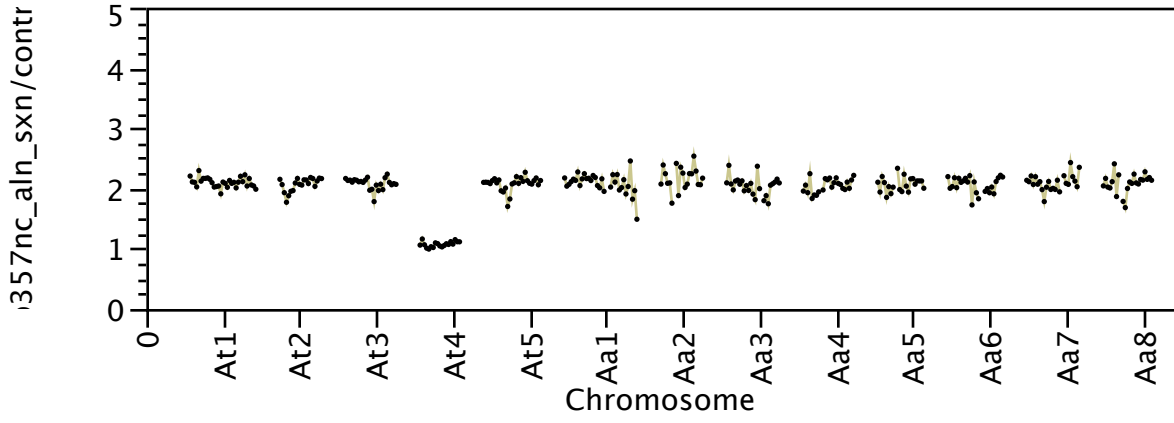
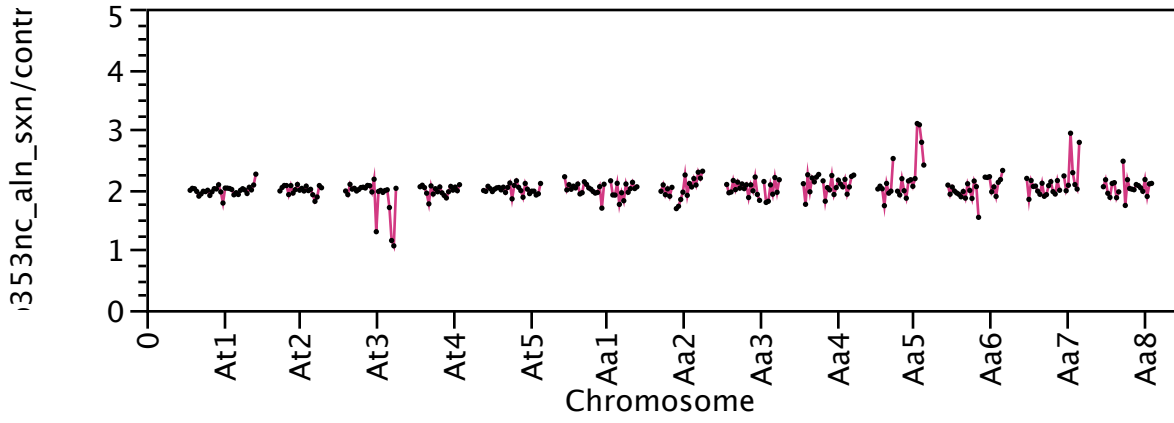
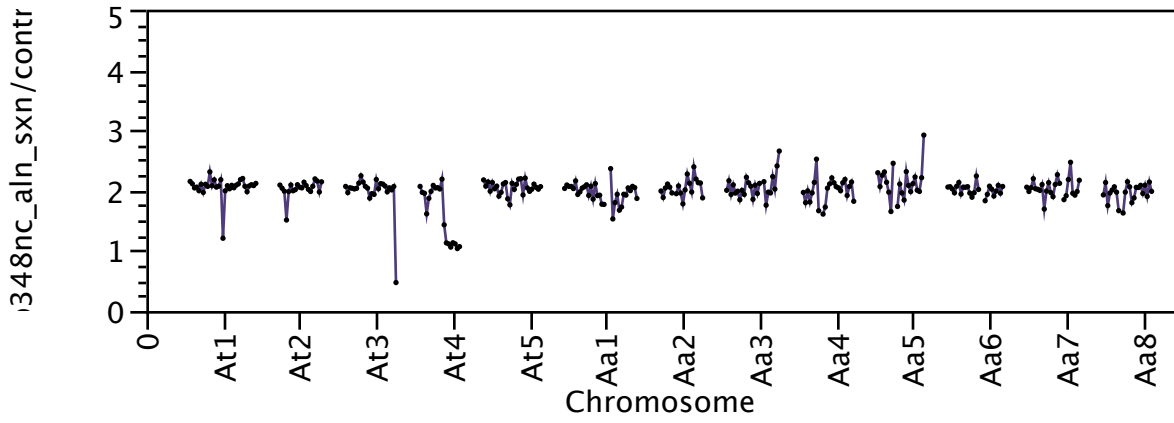
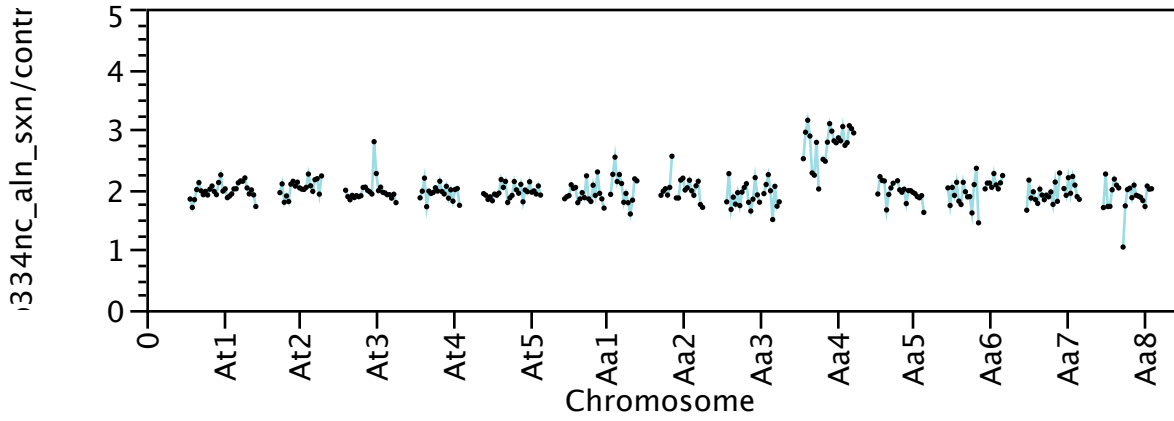
Overlay Plot



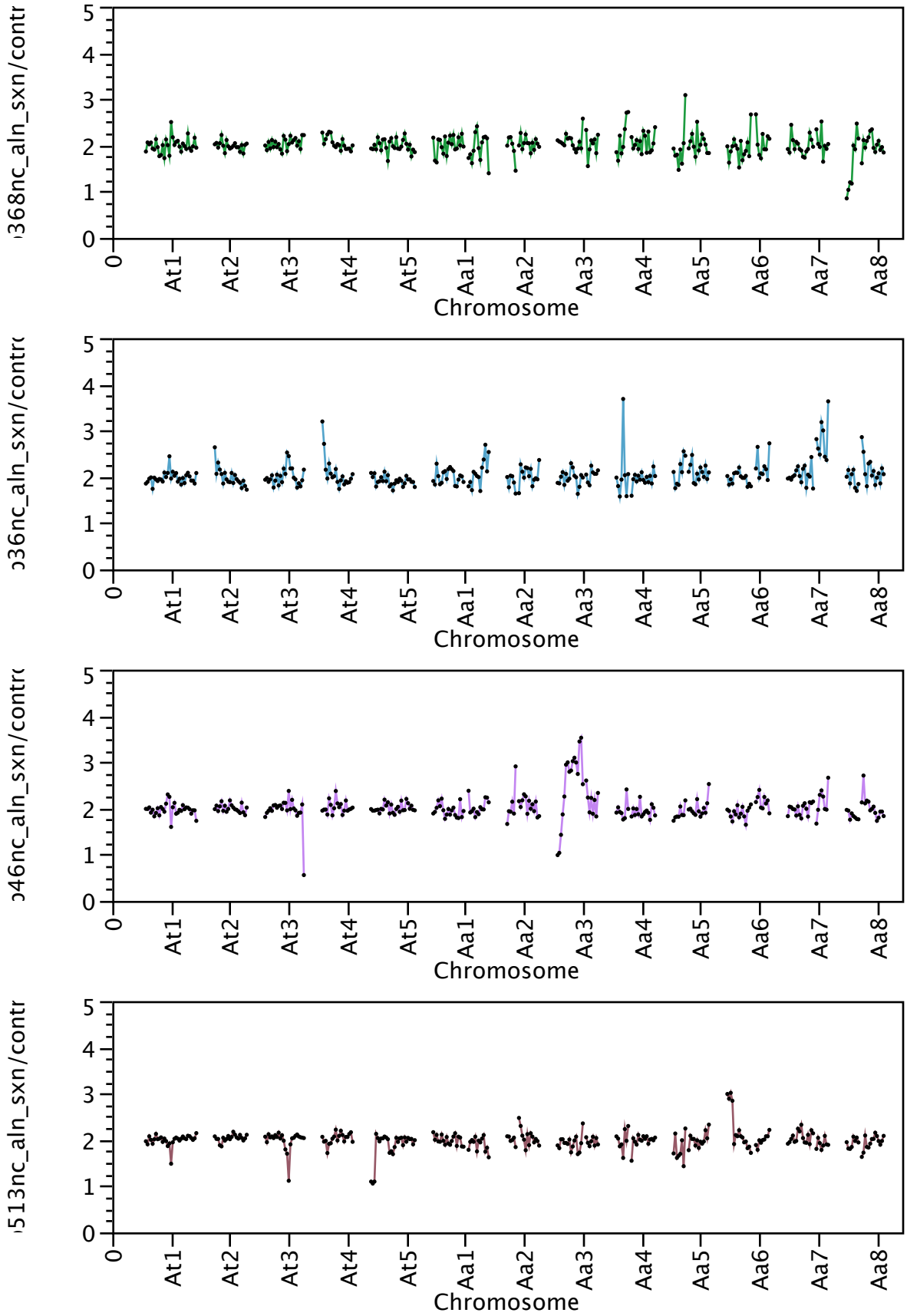
Overlay Plot



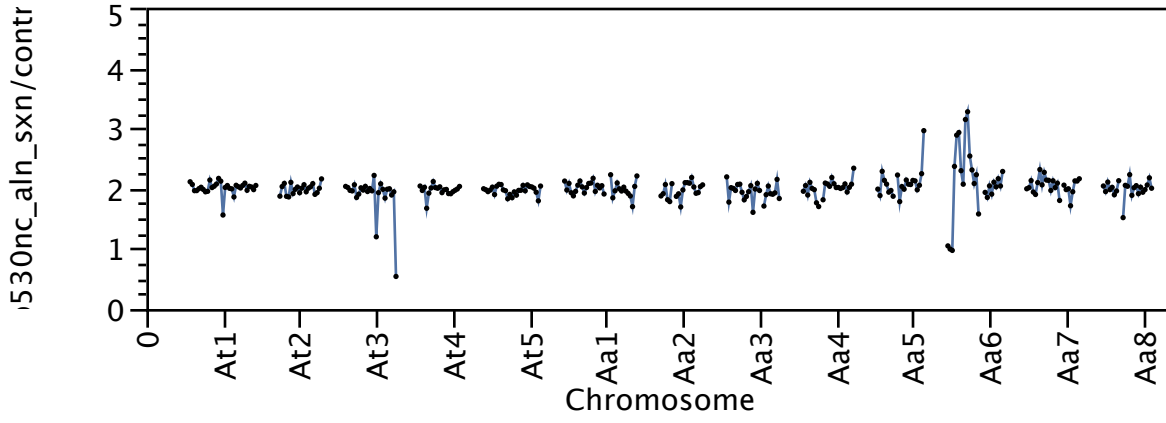
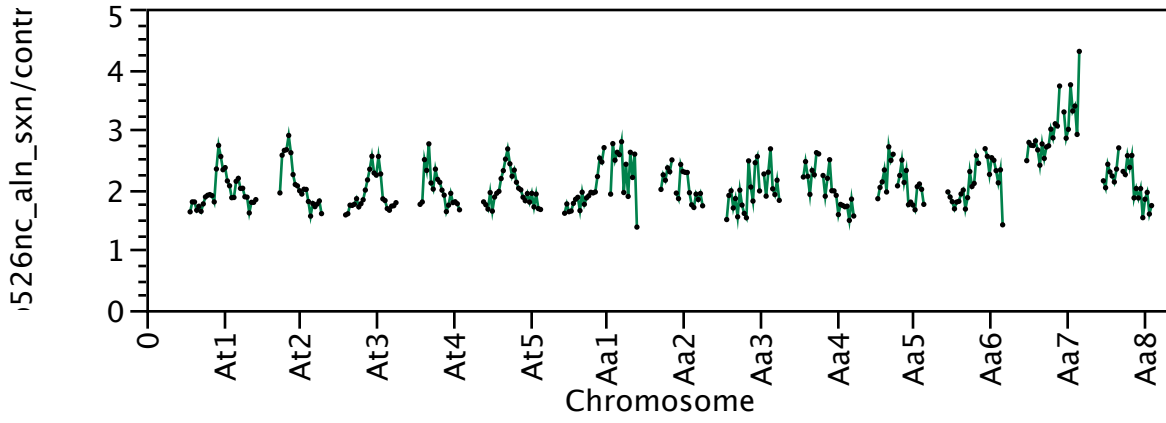
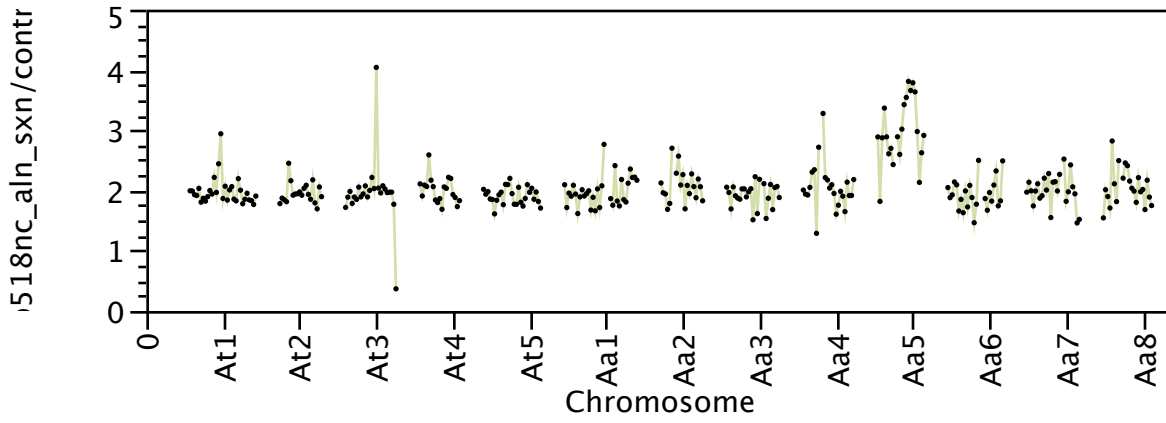
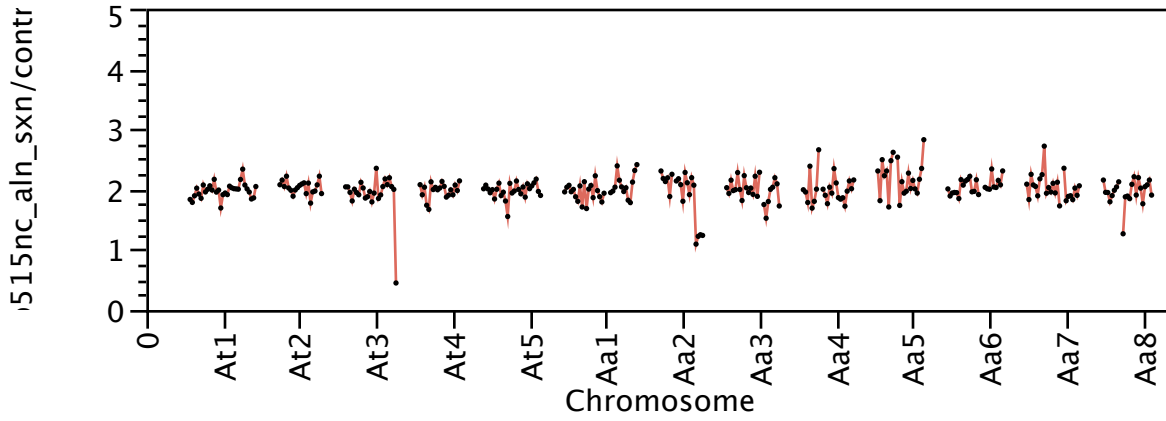
Overlay Plot



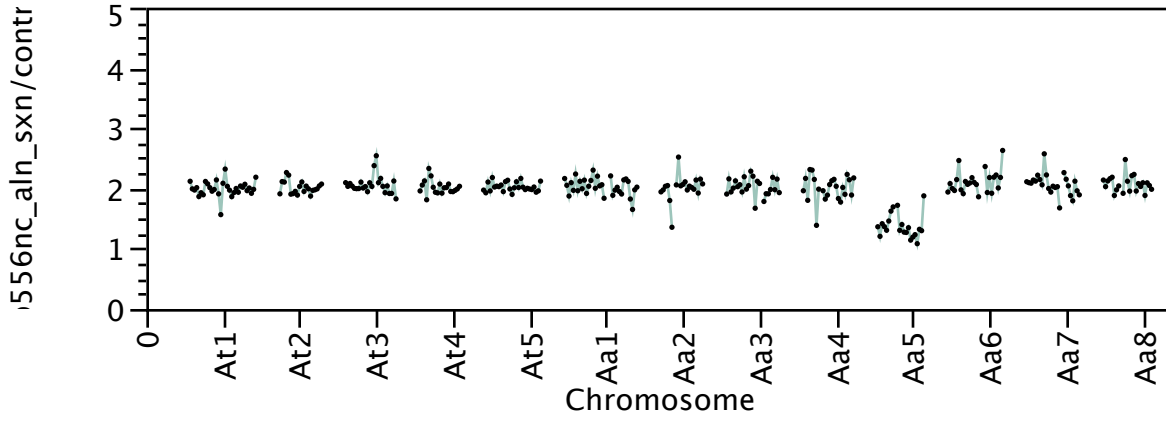
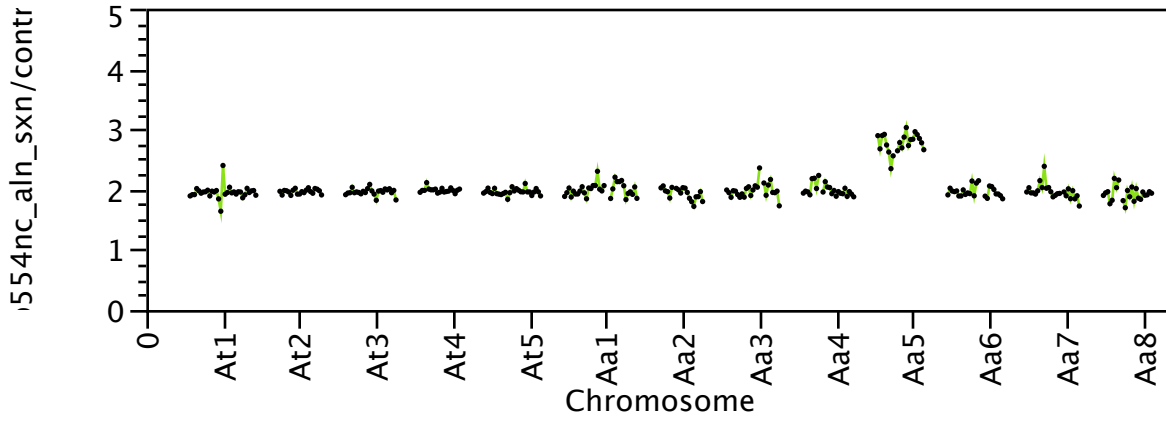
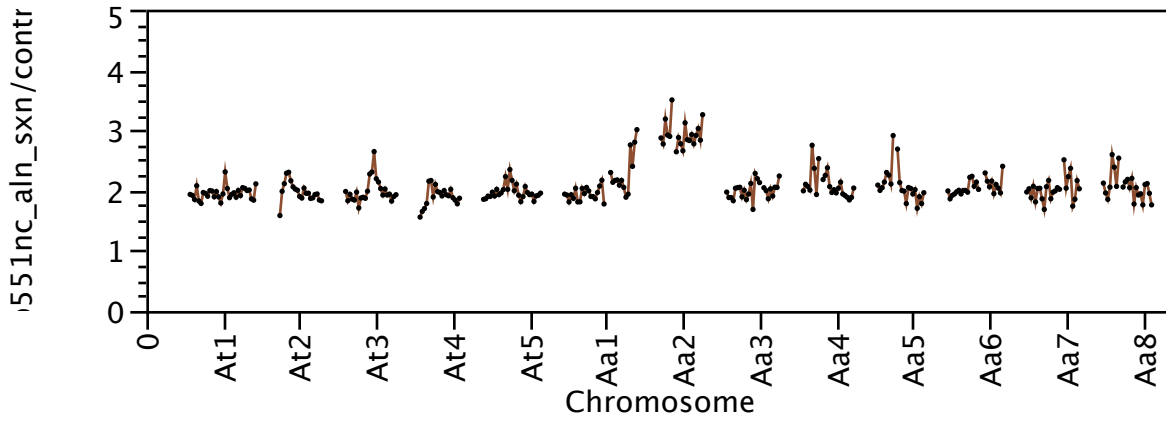
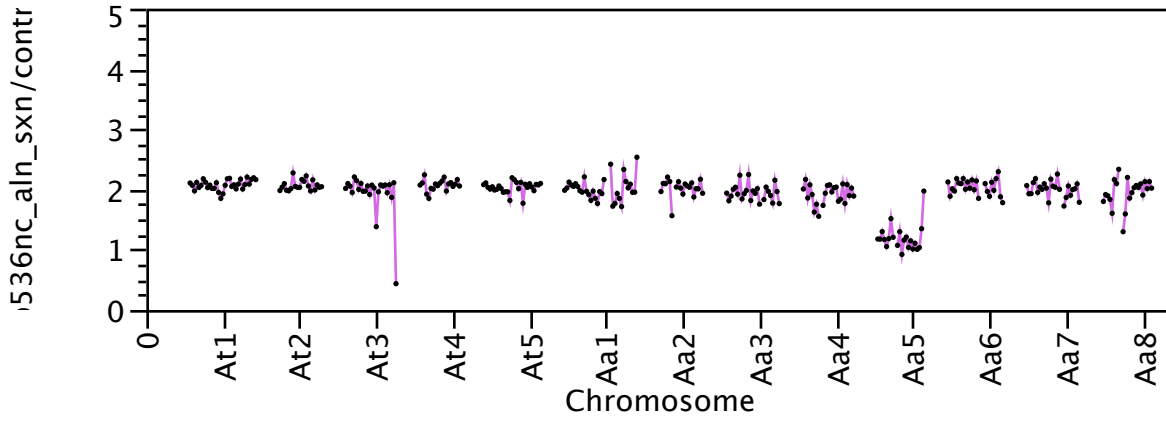
Overlay Plot



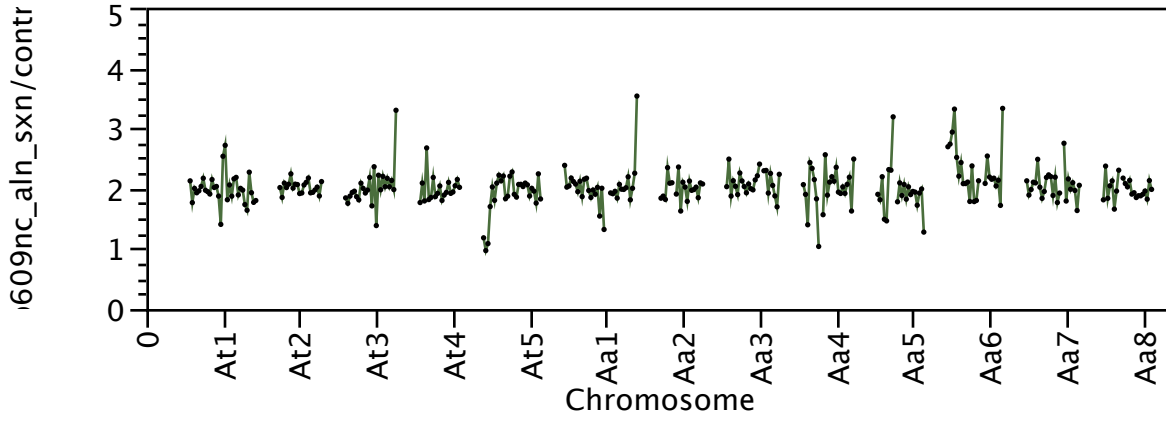
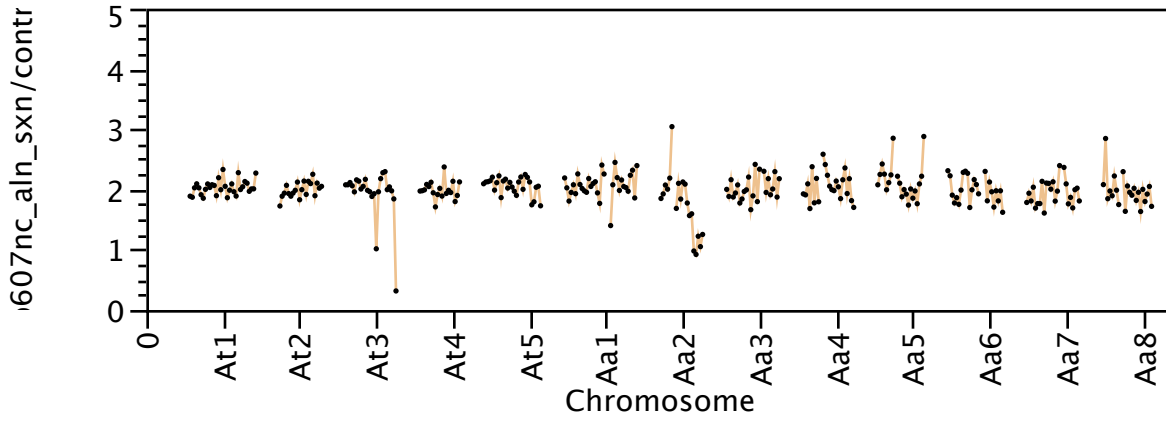
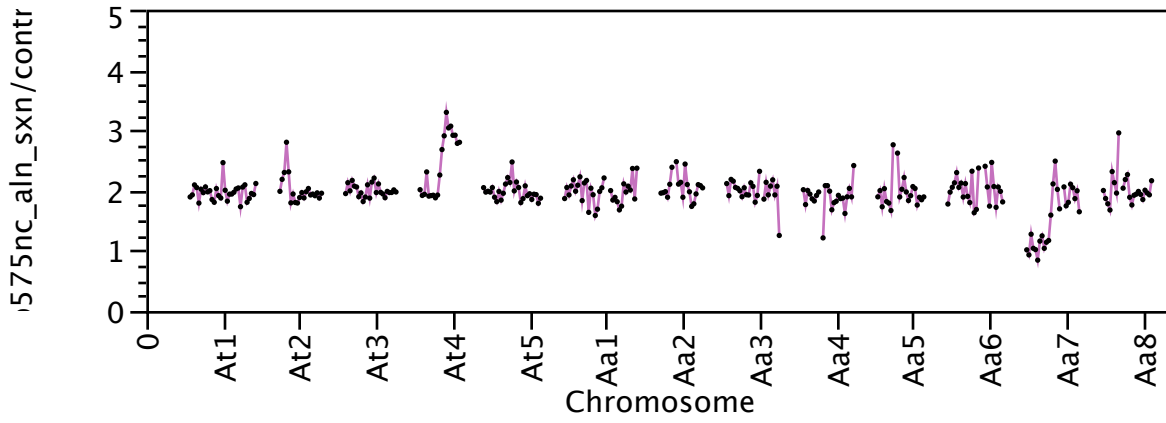
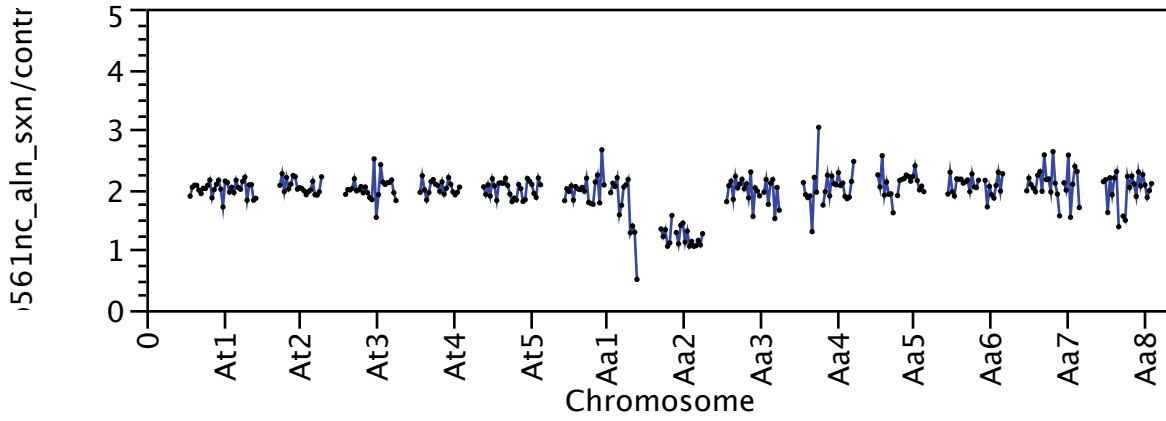
Overlay Plot



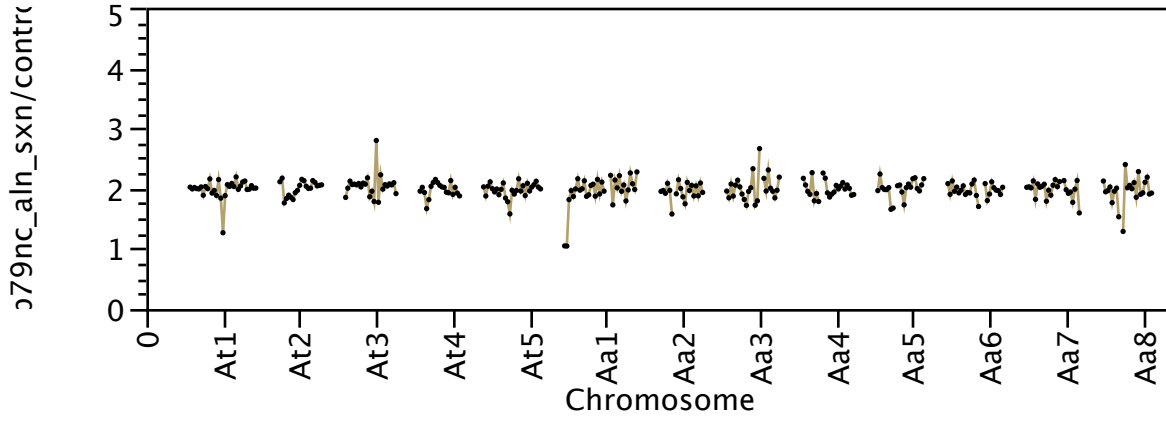
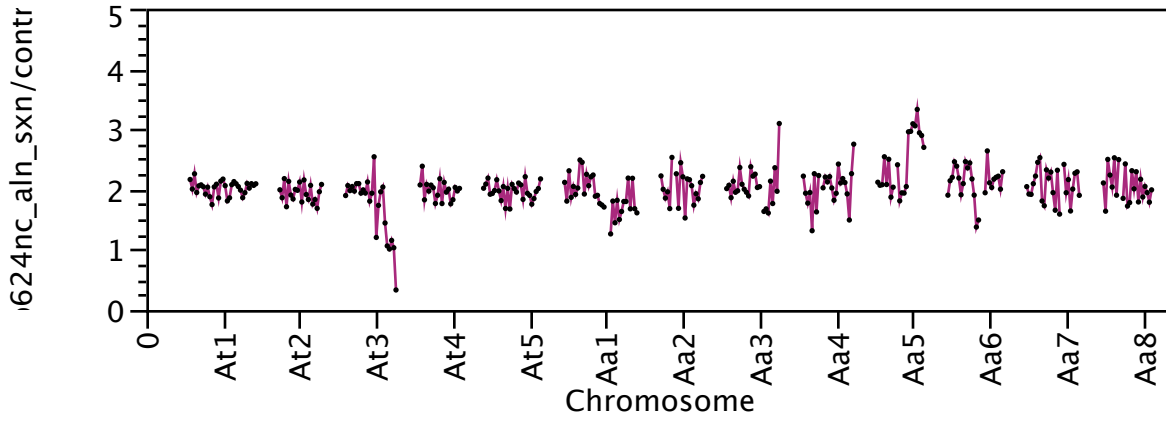
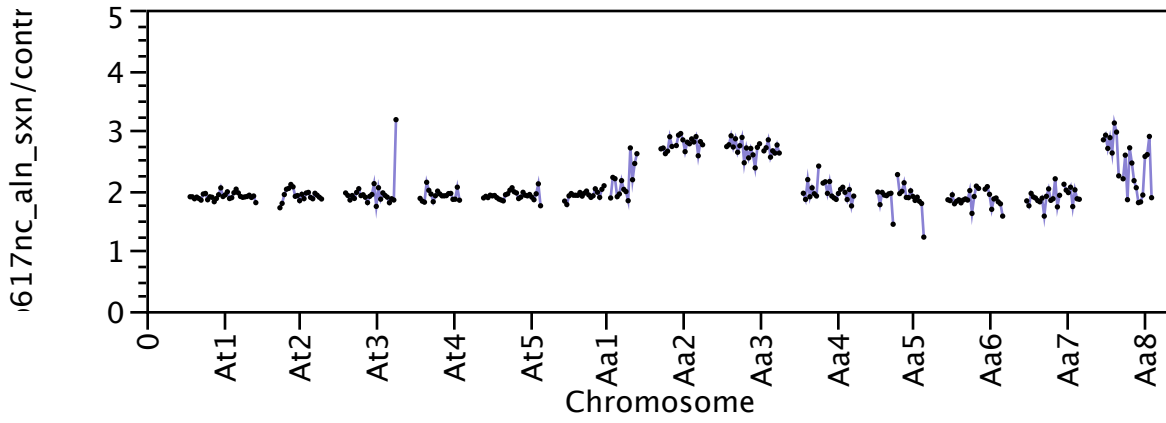
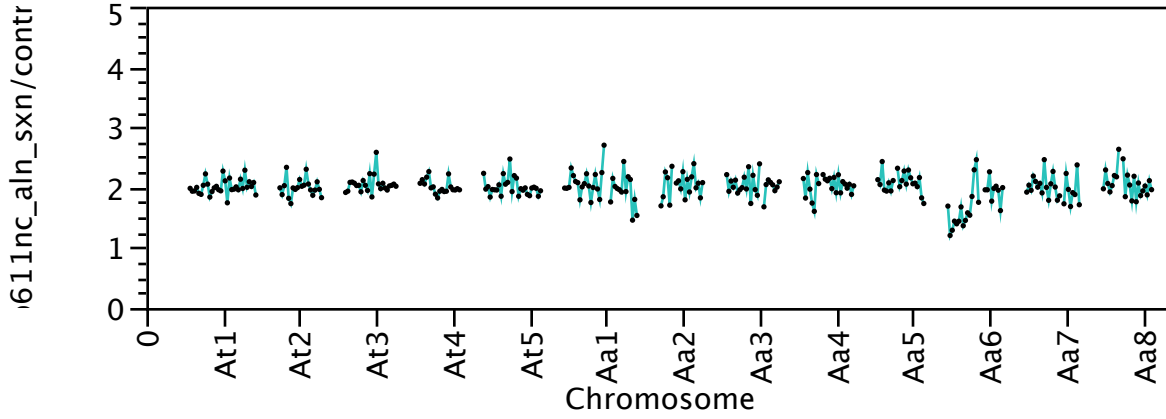
Overlay Plot



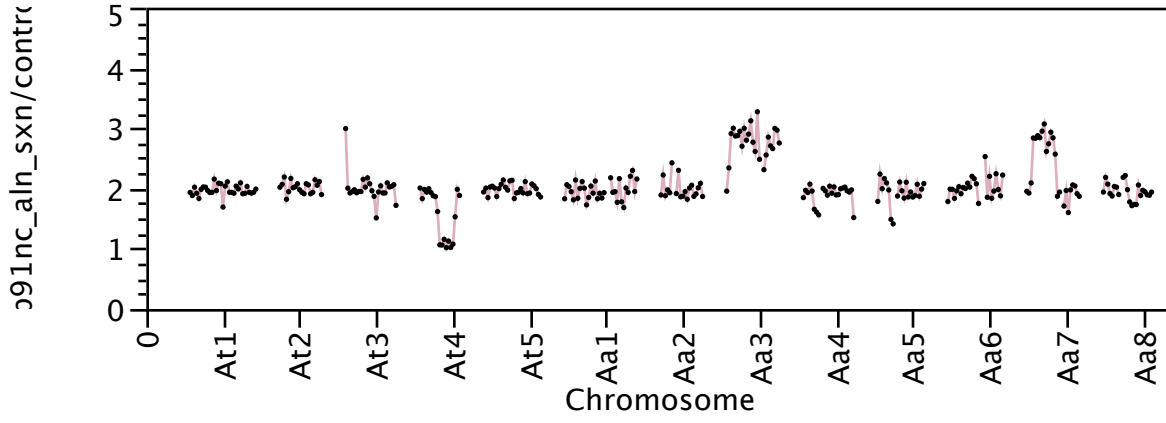
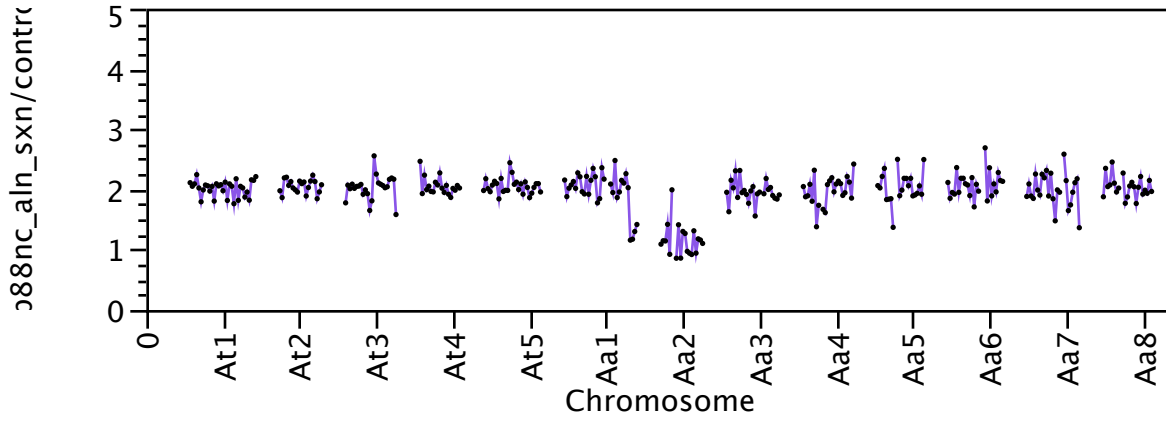
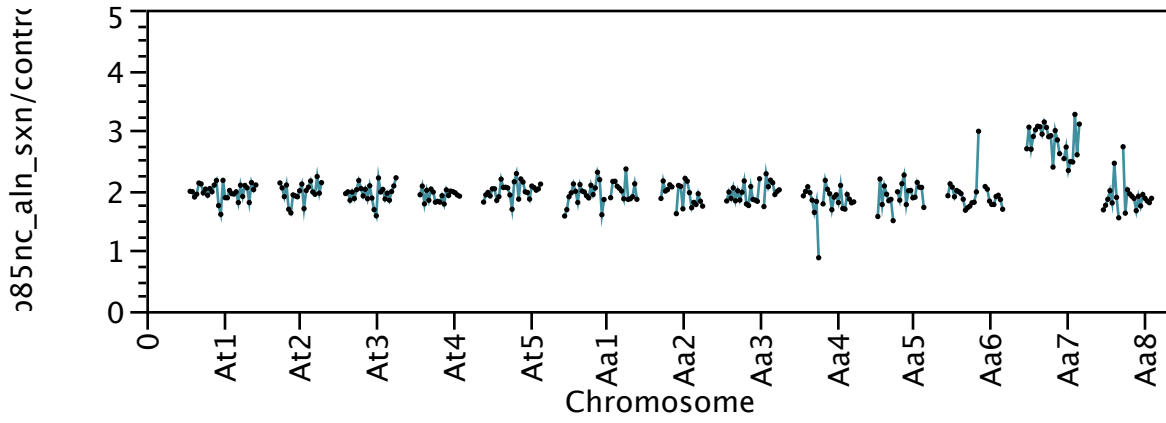
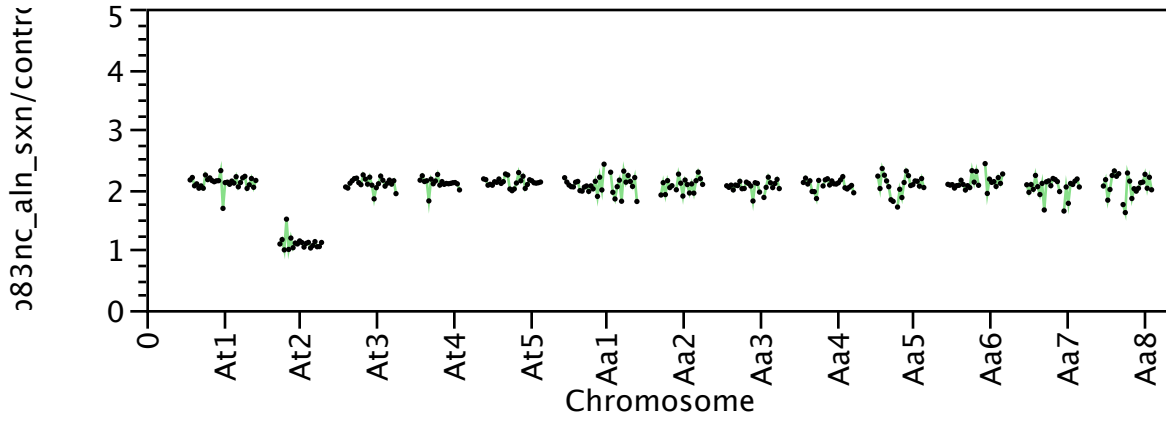
Overlay Plot



Overlay Plot



Overlay Plot



Overlay Plot

