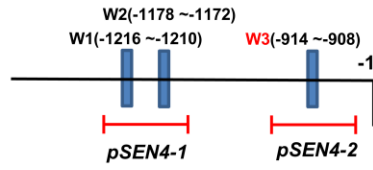
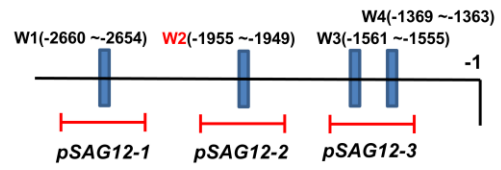


Supplemental Fig. 1 Loss of *WRKY57* function accelerated leaf senescence only induced by exogenous MeJA.

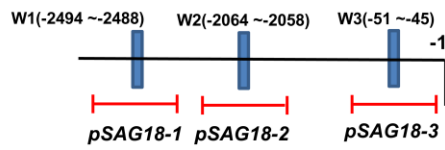
SEN4 Promoter



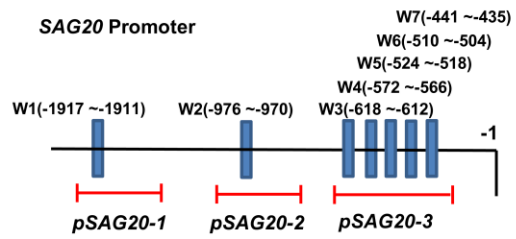
SAG12 Promoter



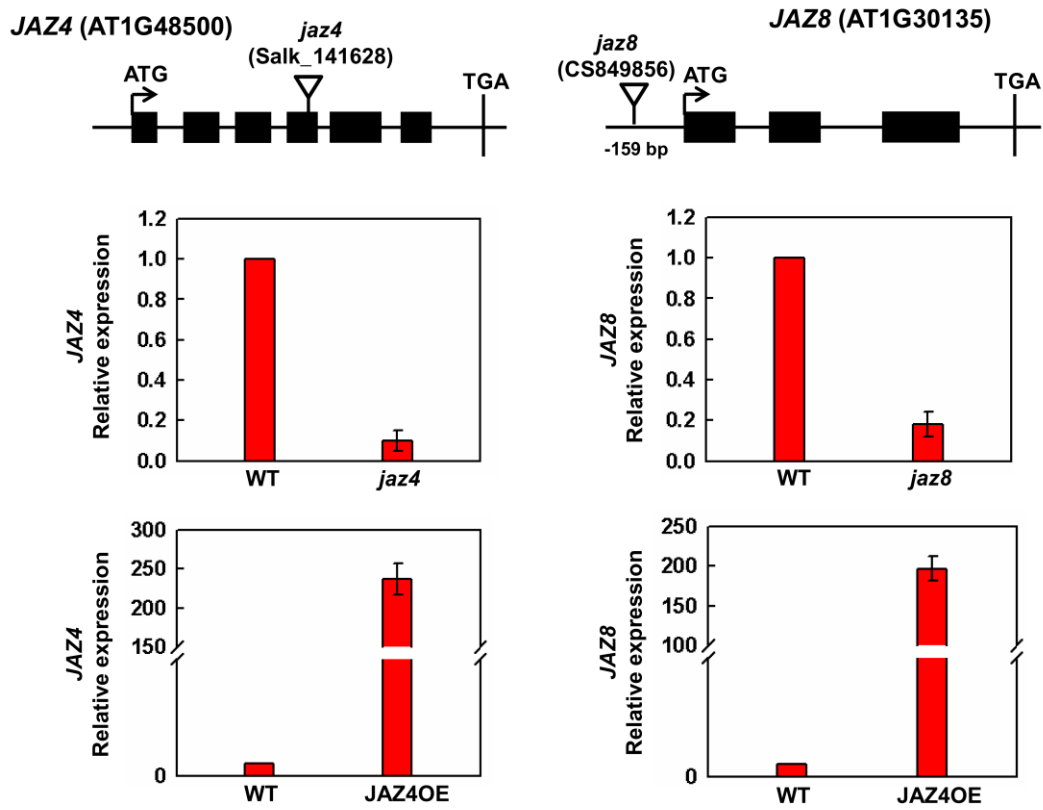
SAG18 Promoter



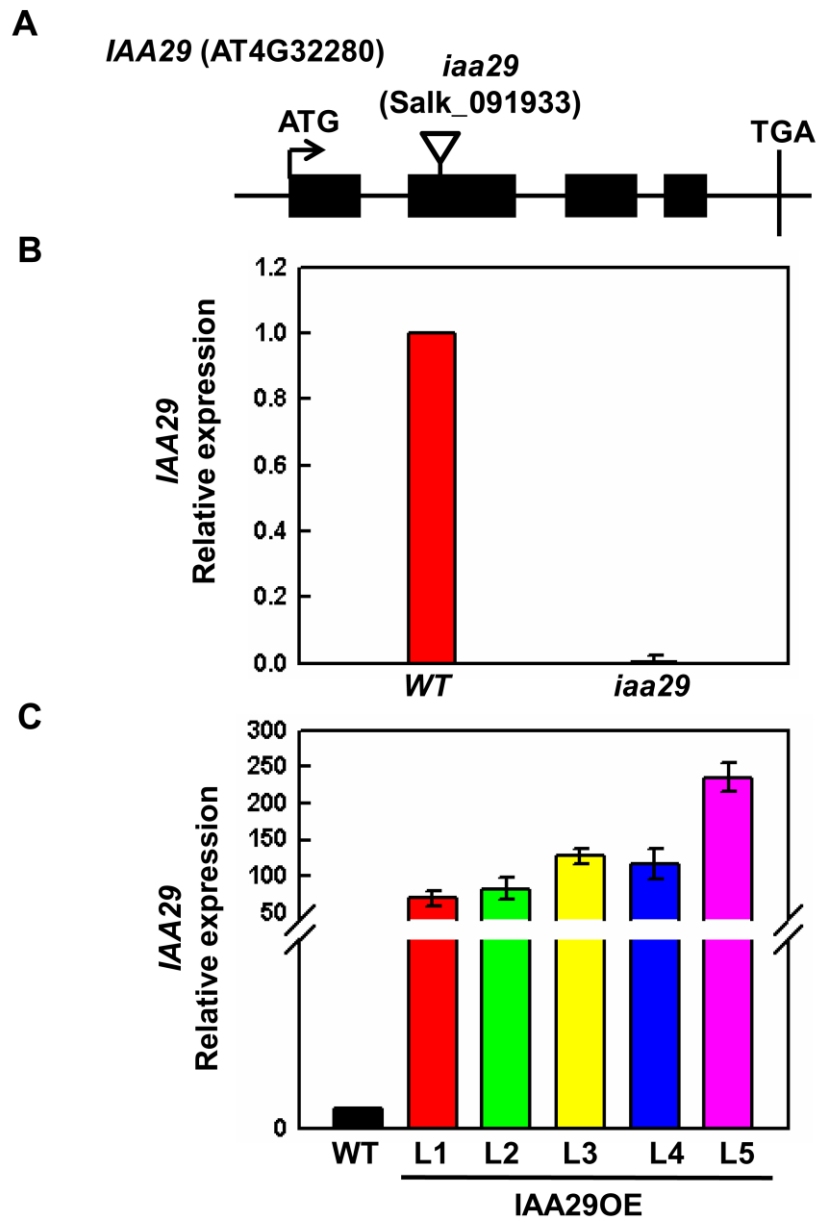
SAG20 Promoter



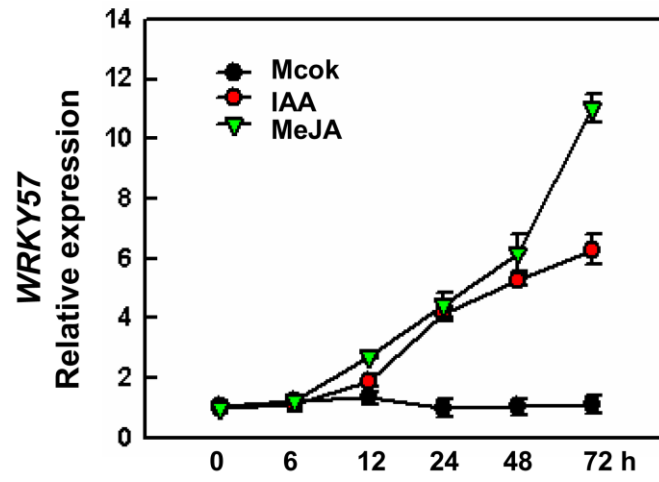
Supplemental Fig. 2 W box information of *SEN4*, *SAG12*, *SAG18* and *SAG20* genes promoter sequences in detail. W1, W2 etc. denote each W box, numbered left to right with sequence sites relative to the start code. Red lines indicate the sequences detected by ChIP assays.



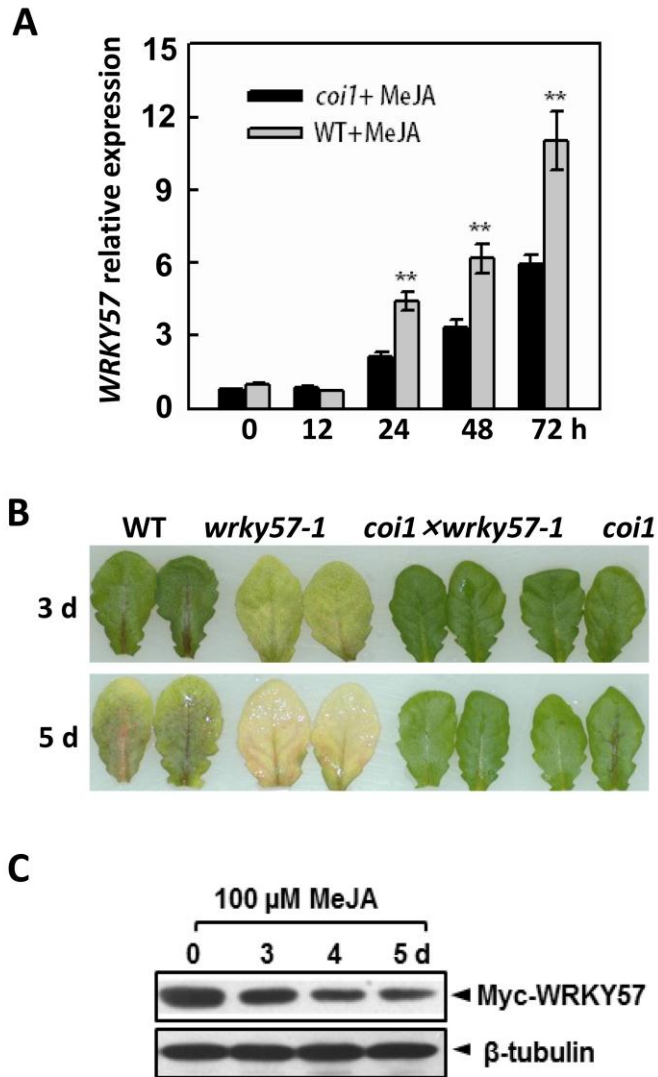
Supplemental Fig. 3 Mutants and overexpression lines screening of *JAZ4* and *JAZ8*.



Supplemental Fig. 4 Mutant and overexpression lines screening of *IAA29*.



Supplemental Fig. 5 Expression levels of *WRKY57* in *ProWRKY57:Myc-WRKY57* transgenic plants under IAA and MeJA treatments.



Supplemental Fig. 6 The function of WRKY57 in JA-induced senescence is dependent on COI1,

Supplemental Table 1. qRT-PCR Primer Sets Used in This Study, Related to Figure 2.

Quantitative RT-PCR primers		
Genes	Primer sequences (5' → 3')	
	Primer forward	Primer reverse
<i>WRKY57</i> (AT1G69310)	CACAAACAGCAGATGCACGG	CTATGTGGGTCGTGTGCAGT
<i>SEN4</i> (AT4G30270)	GACTCTTCTCGTGCGGCGT	CCCACGGCCATTTCCCAAGC
<i>SAG12</i> (AT5G45890)	GCGTTTTTCAGCGGTTGCGG	CCGCCTTCGCAGCCAAAATCG
<i>SAG18</i> (AT1G71190)	GTTTGCAGGTGAGAAAATAGGA	AGAGTAGCATCGTTGGGTGAAG
<i>SAG20</i> (AT3G10985)	TCGGTAACGTTGTTGCTGGA	ACCAAACCTTTCAAATCGCCA
<i>JAZ4</i> (AT1G48500)	CTCGGGCTGGGATCAAAGTT	ACTGAGGACCAGAACCGACT
<i>JAZ8</i> (AT1G30135)	CTCAAACGGGTCGGATCCTC	CGTCGTGAATGGTACGGTGA
<i>IAA29</i> (AT4G32280)	GCGTTTTGAGGCGACGTTTGGG	CTTCTTCGTTGGGCTGGCCA

Supplemental Table 2. Primer Sets Used in Yeas-two-hybrid and BiFC Assay, Related to Figure 3 and 7.

Yeast-two-hybrid primers		
Genes	Primer sequences (5' → 3')	
	Primer forward	Primer reverse
<i>WRKY57</i>	TATCCATGGACGATCCTGATAATCCCGATCTG	TATGTCGACTCAAGGGTTGCGCATAGTTTG
<i>IAA29</i>	TATGAATTCATGGAGTTGGATCTTGGTCATTCTC	TATGGATCCAACGCCTATCCTTAAAACAAACATC
<i>JAZ4</i>	GGGGAATTCTGGAGAGAGATTTCTCGGGCTG	CCCGGAGCTCTTAGTGAAGATGATGAGCTGGA
<i>JAZ8</i>	CCCCCCGGGTATGAAGCTACAGCAAATTGT	GGGGAGCTCTTATCGTCGTGAATGGTACGGTG

BiFC primers		
Genes	Primer sequences (5' → 3')	
	Primer forward	Primer reverse
<i>WRKY57</i>	TATTCTAGAATGAACGATCCTGATAACCCG	TATGGATCCAGGTTGCGCATAGTTTGAG
<i>IAA29</i>	TATGAATTCATGGAGTTGGATCTTGGTCATTCTC	ATATCTGAGAAACAACATCTTGTATATGAACA
<i>JAZ4</i>	CAACATTTAAATATGGAGAGAGATTTCTCGG	AAATCTAGAGTGCAGATGATGAGCTGG
<i>JAZ8</i>	AAAATTTAAATATGAAGCTACAGCAAAGTGACT	AAATCTAGATCGTCGTGAATGGTACGGTG