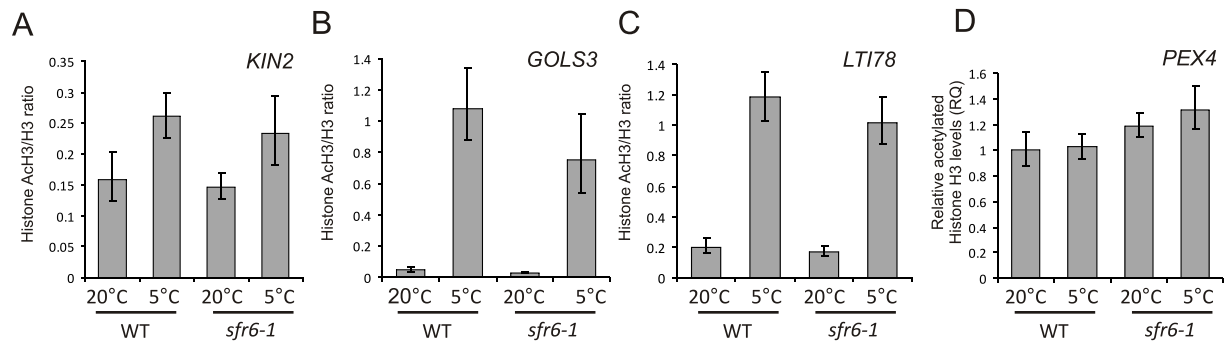


Supplemental dataset 4

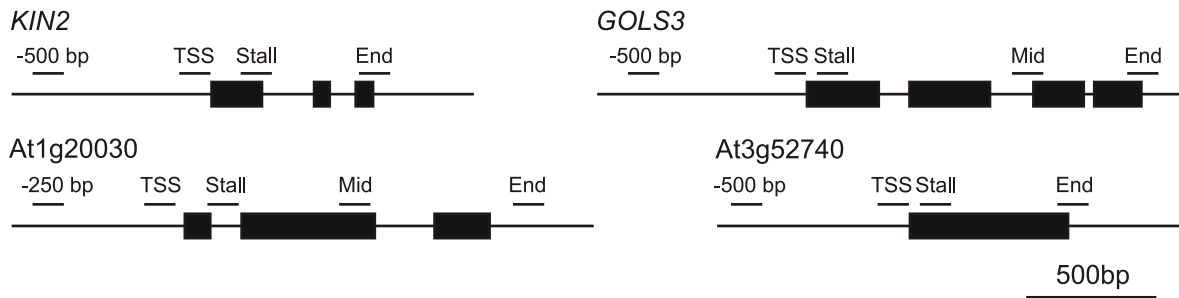
These figures show data from a second biological repeat of experiments shown in the main paper figures.

Histone acetylation ratios (as in Figure 1 of the paper).

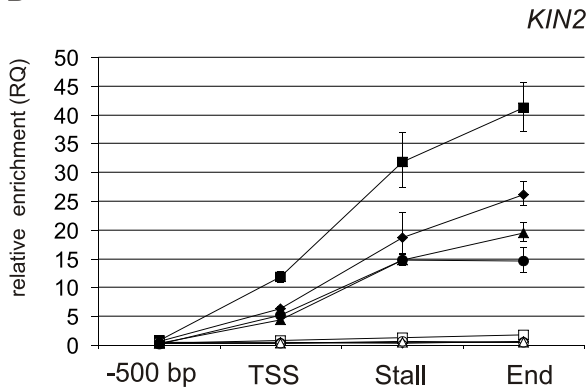


KIN2, *GOLS3*, *At1g20030* and *At3g52740* Pol II ChIP in all 3 tail subunit mutants (as in Figures 2 and 6 of the manuscript).

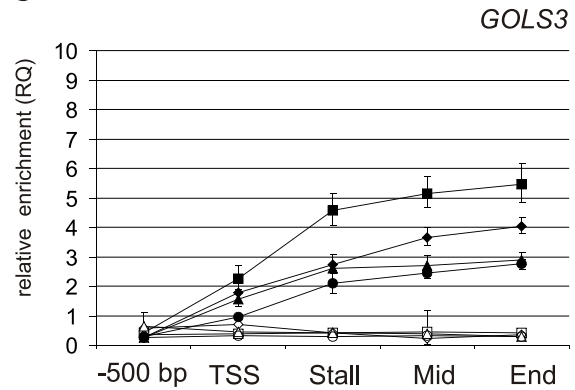
A



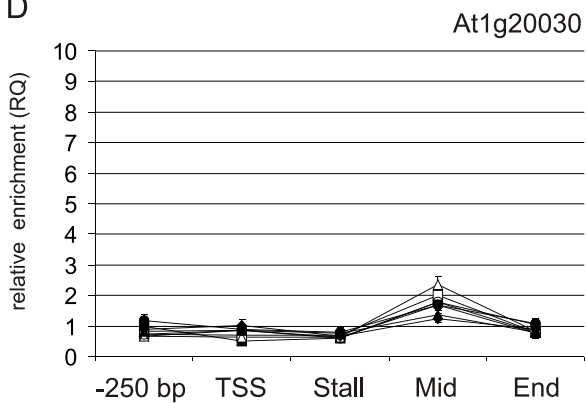
B



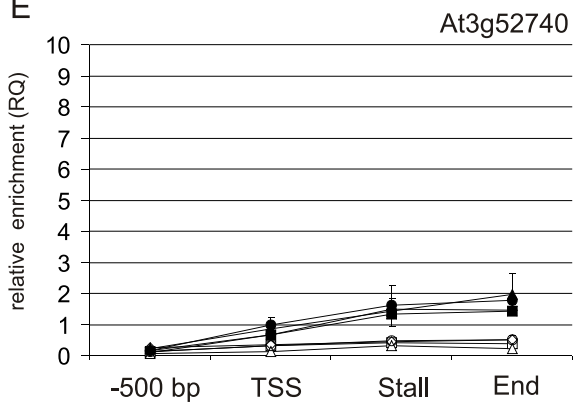
C



D

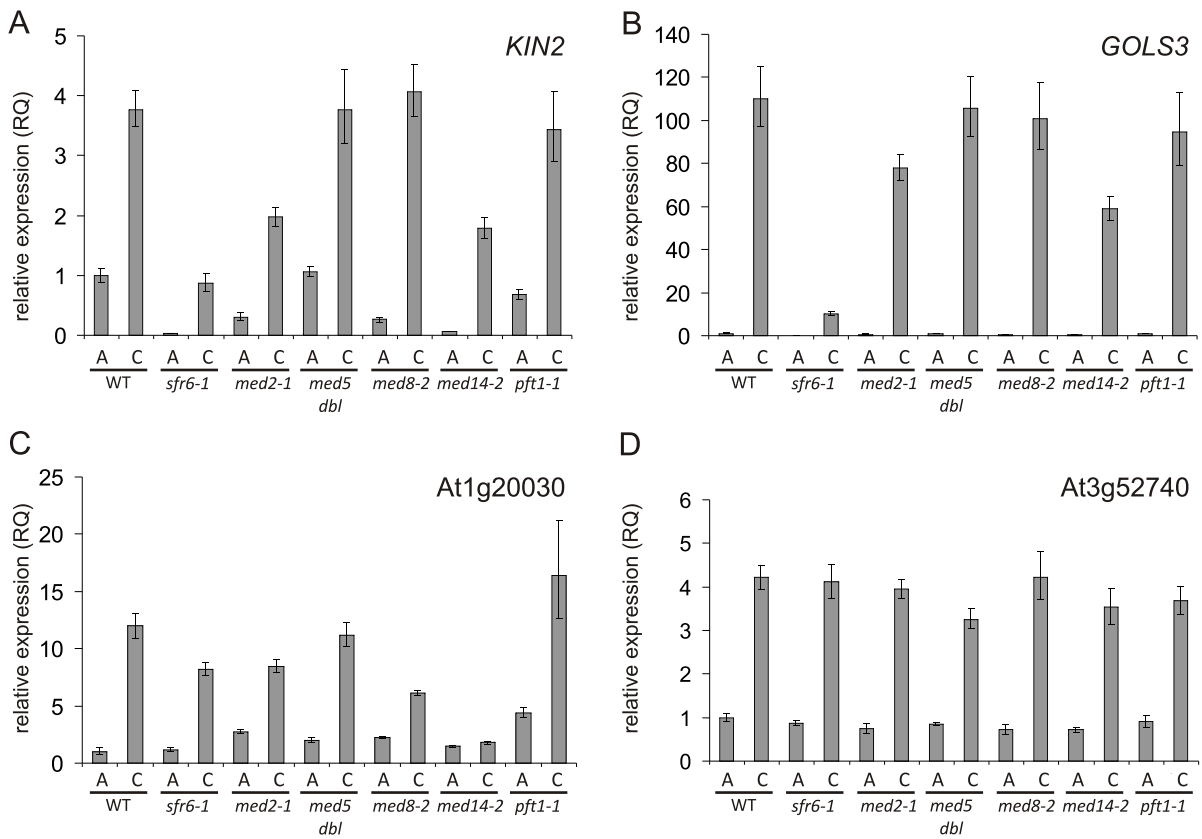


E

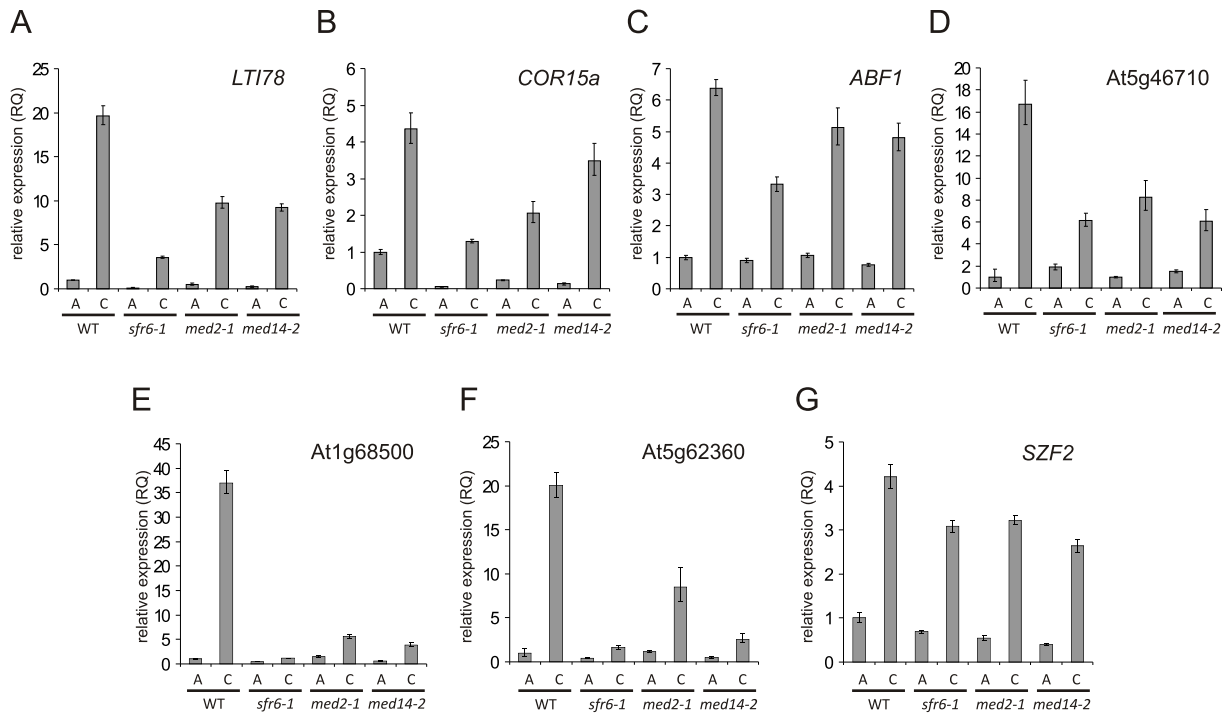


WT 20°C
 sfr6-1 20°C
 med2-1 20°C
 med14-2 20°C
 WT 5°C
 sfr6-1 5°C
 med2-1 5°C
 med14-2 5°C

Cold gene expression in all mutants (as in Figure 4 of the manuscript)



Expression of genes from microarray in 3 tail subunit mutants (as in Figure 5 of the manuscript)

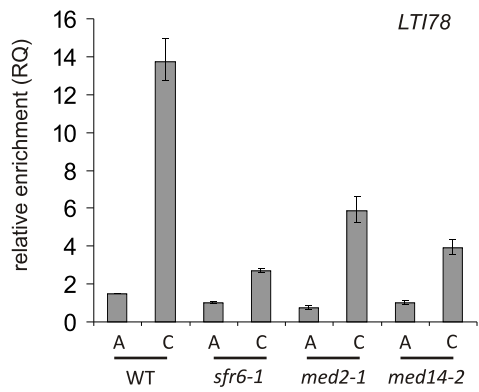


LT178 and *COR15a* Pol II ChIP in 3 tail subunit mutants (as in Figure 7 of the manuscript).

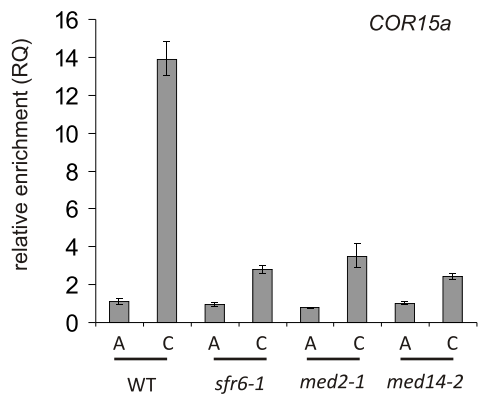
A



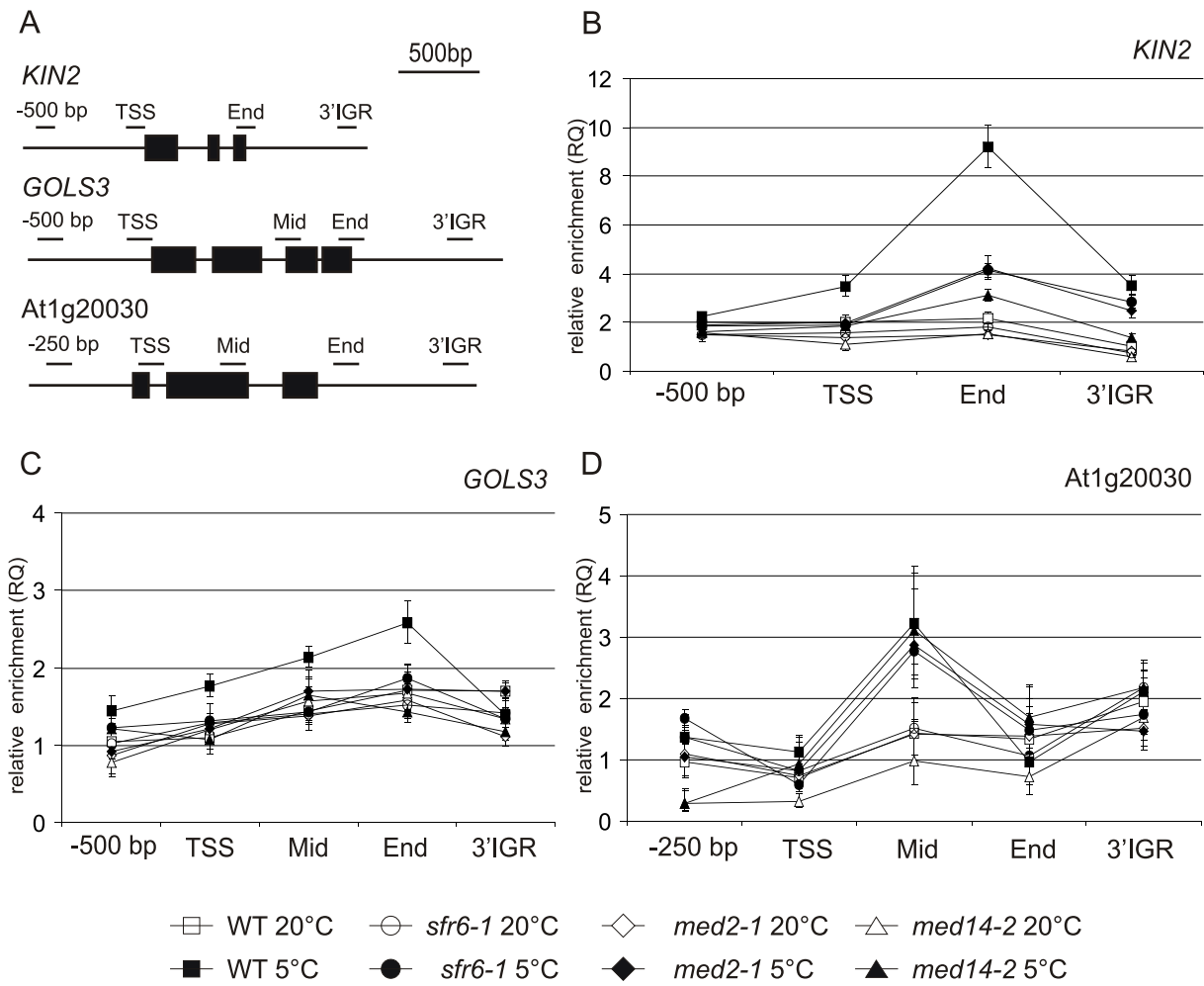
B



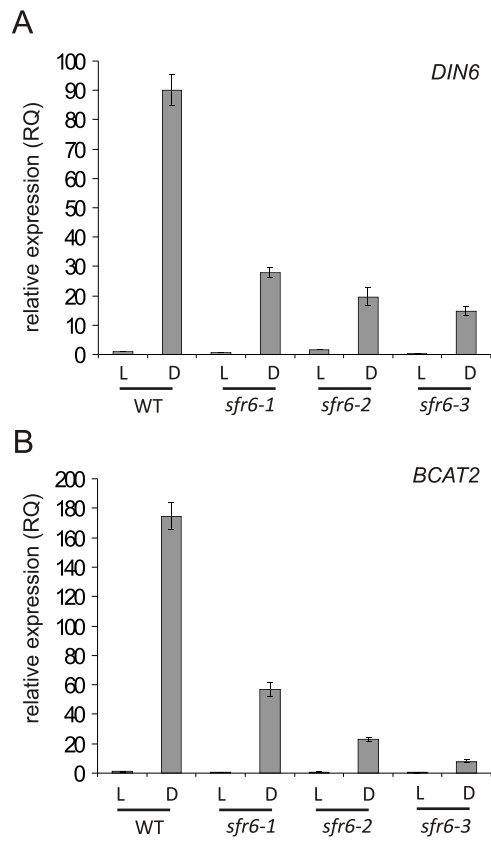
C



KIN2, GOL53 and At1g20030 MED6 CHIP in 3 tail subunit mutants (as in Figure 9 of the manuscript).



Dark induction in three *sfr6* mutant alleles (as in Figure 10 of the manuscript).



Dark-inducible expression in all Mediator mutants (as in Figure 11 of the manuscript).

